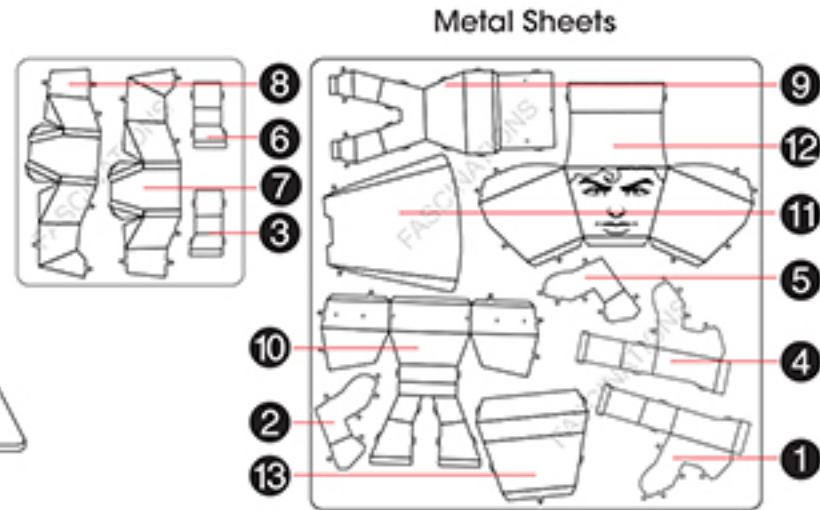


Metal Earth. LEGENDS



Tweezers or needle nose pliers are helpful for assembly.

Fold lines can be seen as shown here

Insertion holes

Insertion tabs are inserted and then folded or twisted

To create the best connections

- Insert tab and bend 90 degrees for most visible areas
- ▲ Insert tab and twist 90 degrees is best in some areas to ensure a tight connection

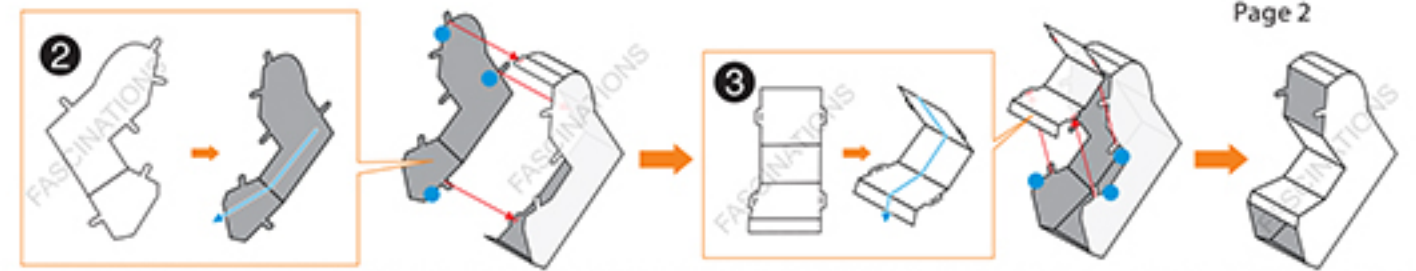
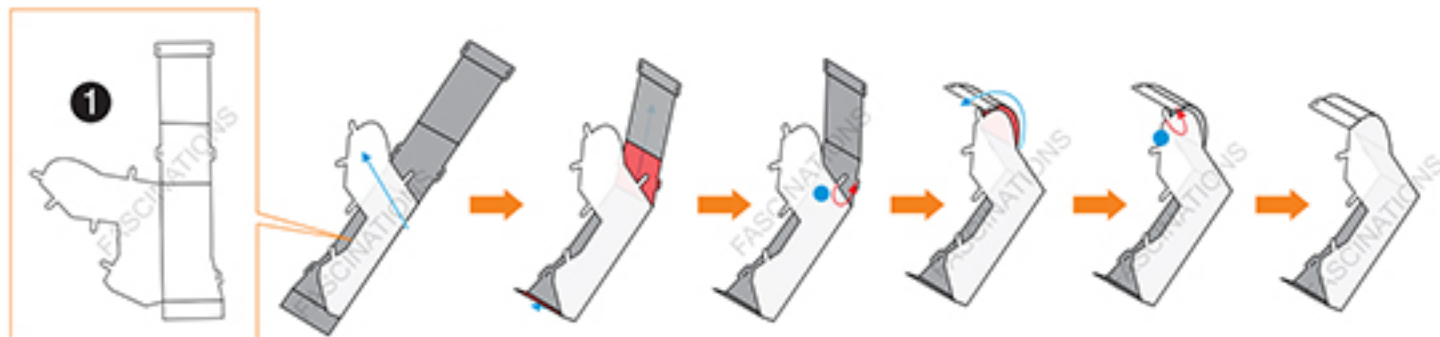


It is recommended that you visit www.metalearth.com/help/mem024 for more information when assembling this model.

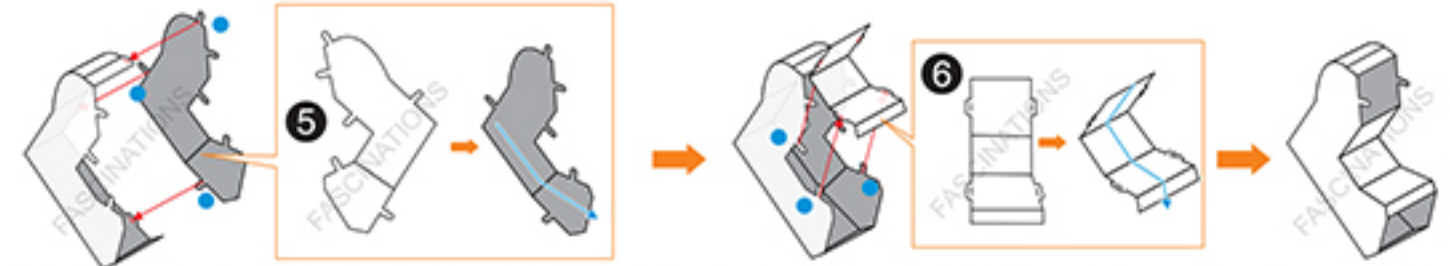
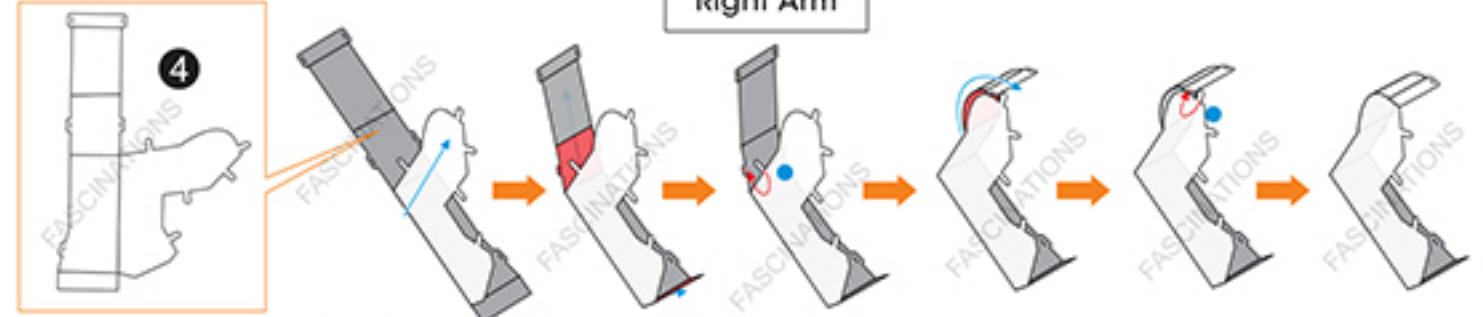
! In order to avoid possible injury from sharp edges, please carefully discard the metal sheet after parts have been removed

Assembly Flow Chart

Left Arm



Right Arm



Left Leg



Right Leg

