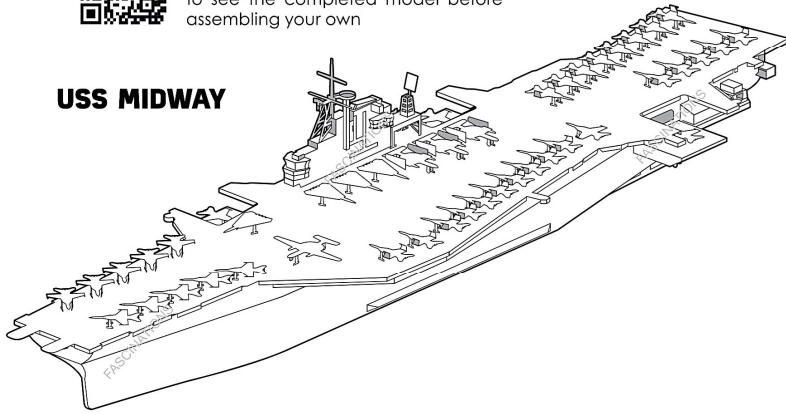




It is highly recommended that you visit [www.metalearth.com/360/PS2003](http://www.metalearth.com/360/PS2003) to see the completed model before assembling your own

## USS MIDWAY



### B



### TO CREATE THE BEST CONNECTIONS

**Legends:**

- Engraved/ Color side
- Non - engraved/ Silver side
- Attention point
- Insert tab and bend 90 degrees
- Insert tab and twist 90 degrees

**Recommended tools:**

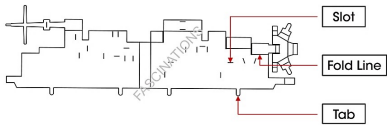
-Wire cutters: helpful for taking parts from the metal sheets.

-Tweezers or needle nose pliers: helpful for folding parts, bending and twisting tabs.

**Assembly tip:**

If needed, slightly twist tabs to hold parts together then untwist and bend them down for a nice finish.  
In order to avoid possible injury from sharp edges, please carefully discard the metal sheets after parts have been removed.

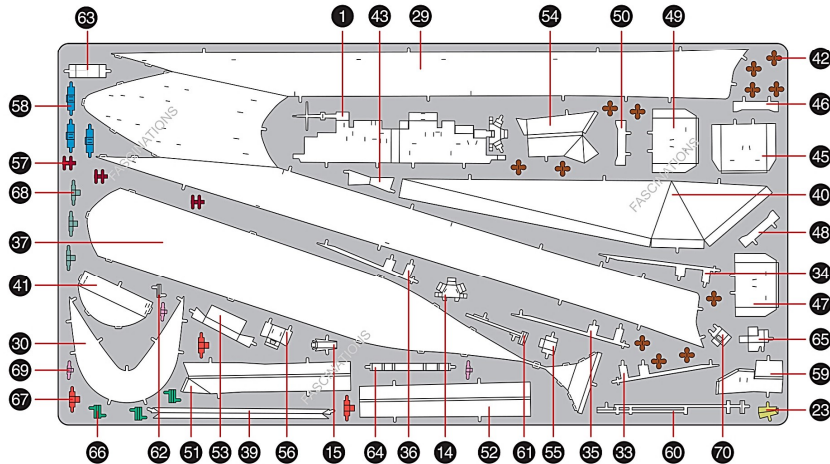
#### A - 1



### METAL SHEETS

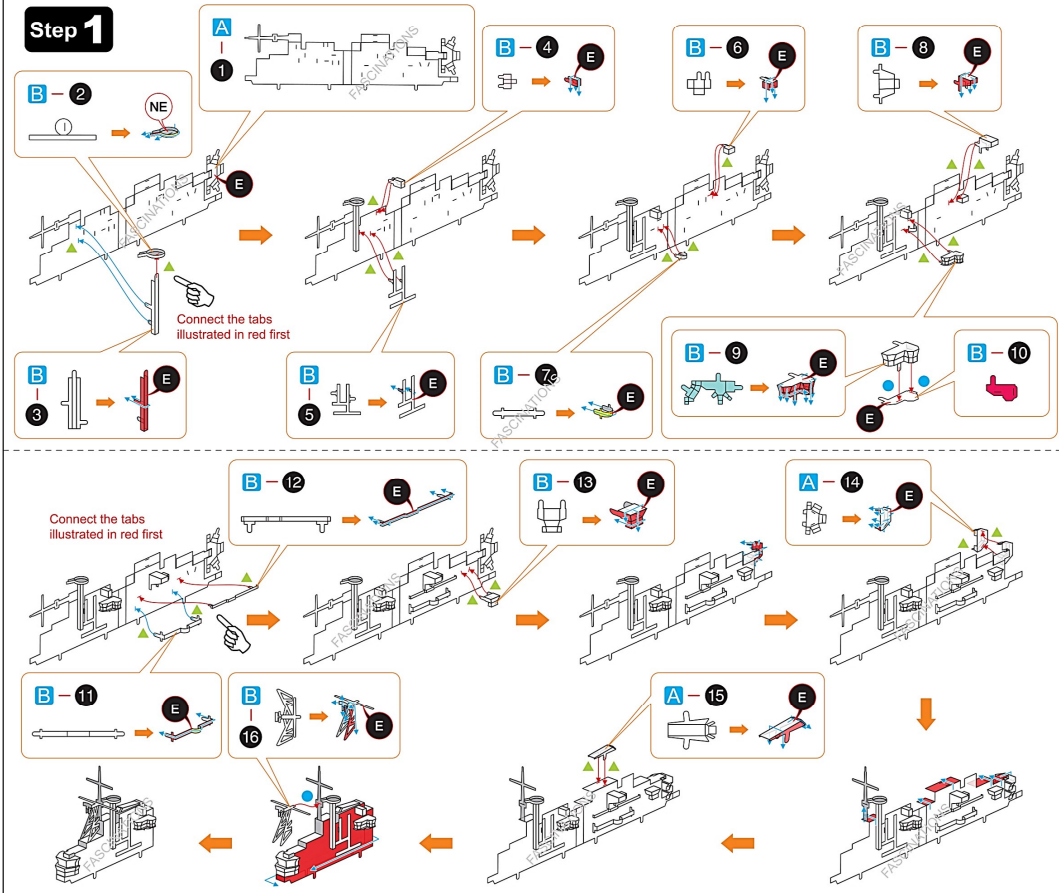
Parts with same color are duplicates

### A

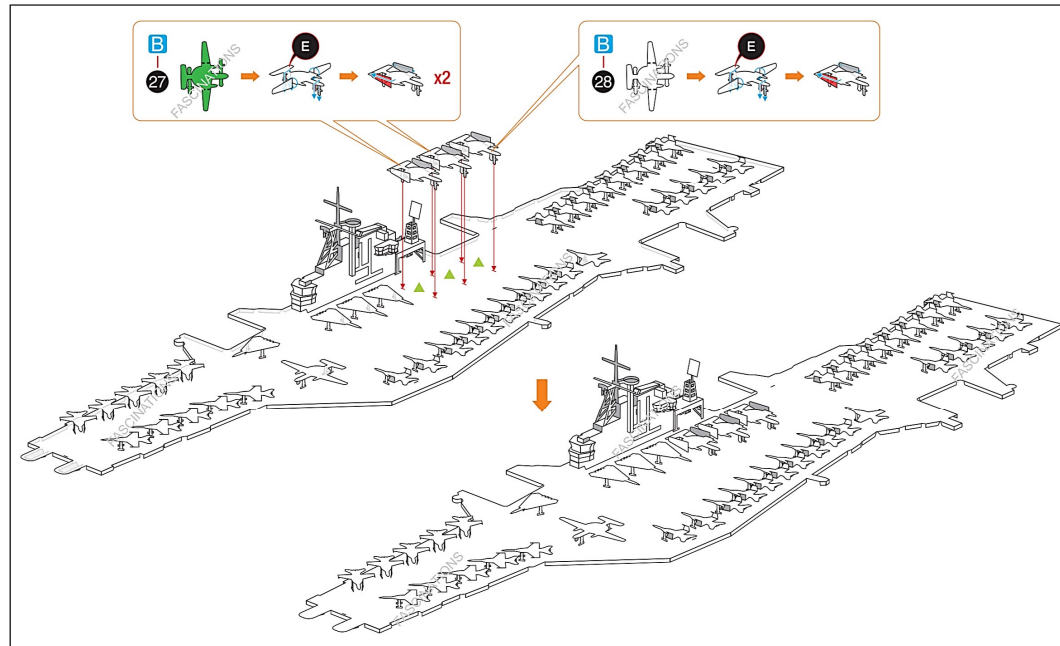
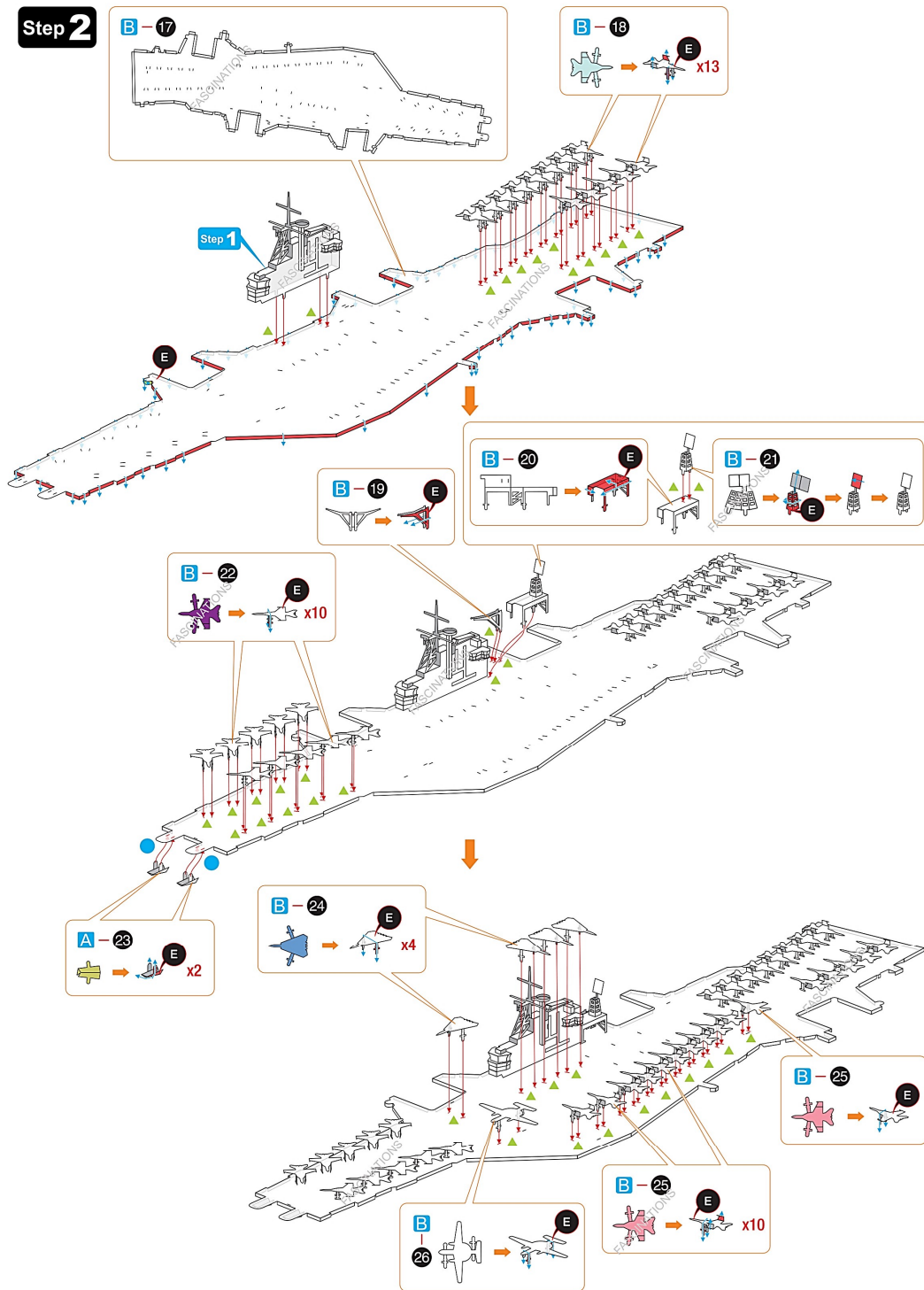


### ASSEMBLY STEPS

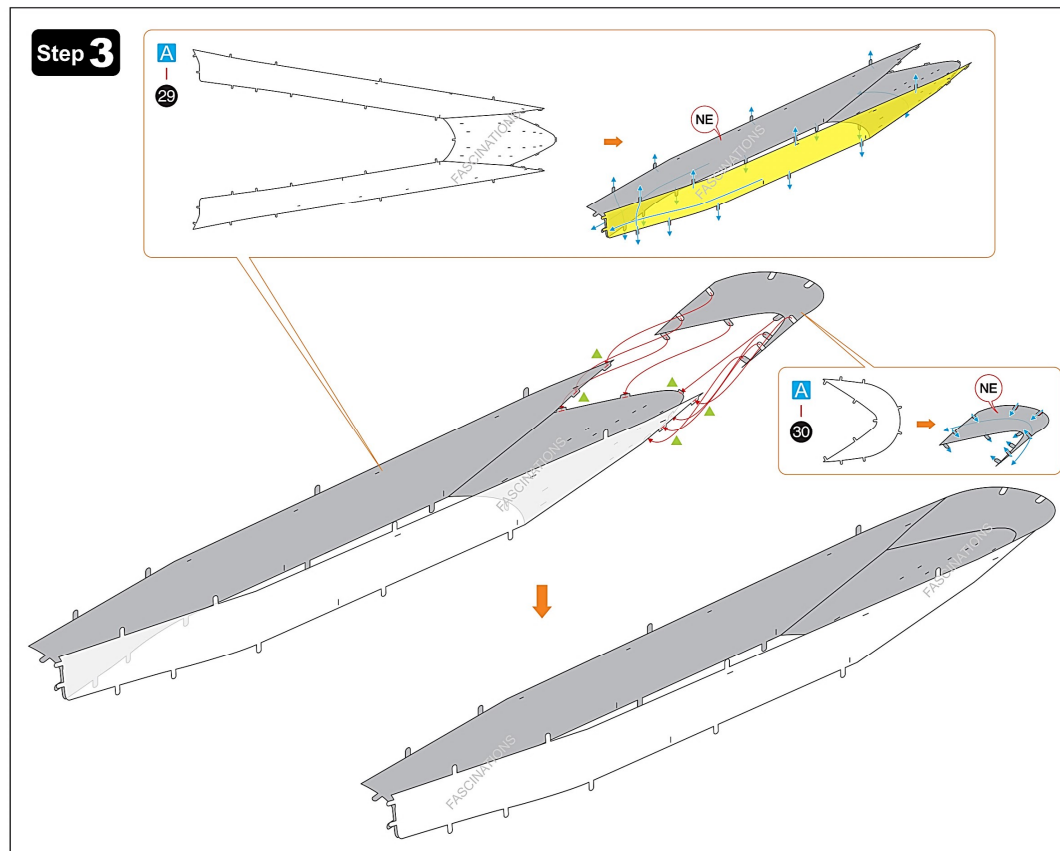
#### Step 1



Step 2

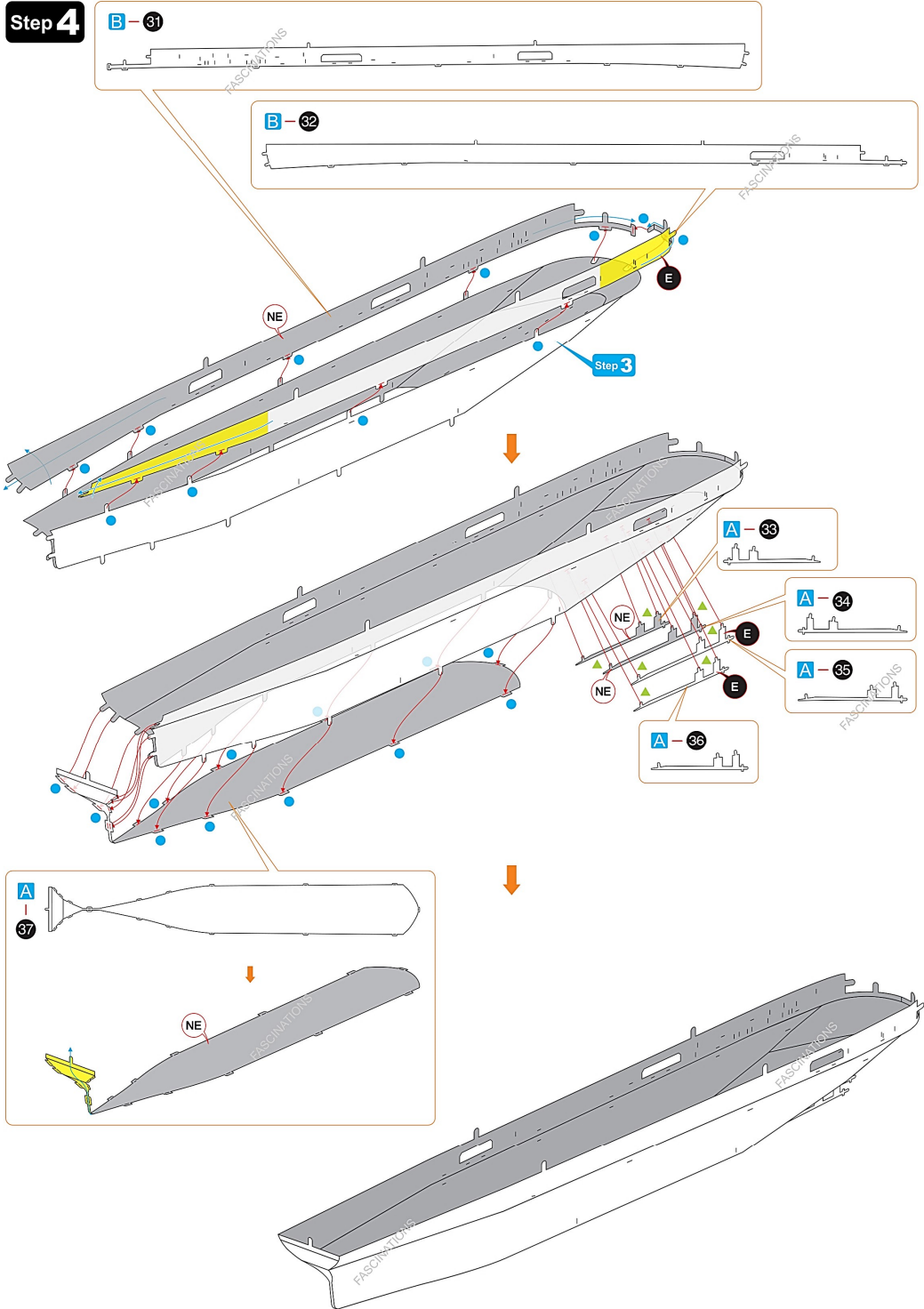


Step 3

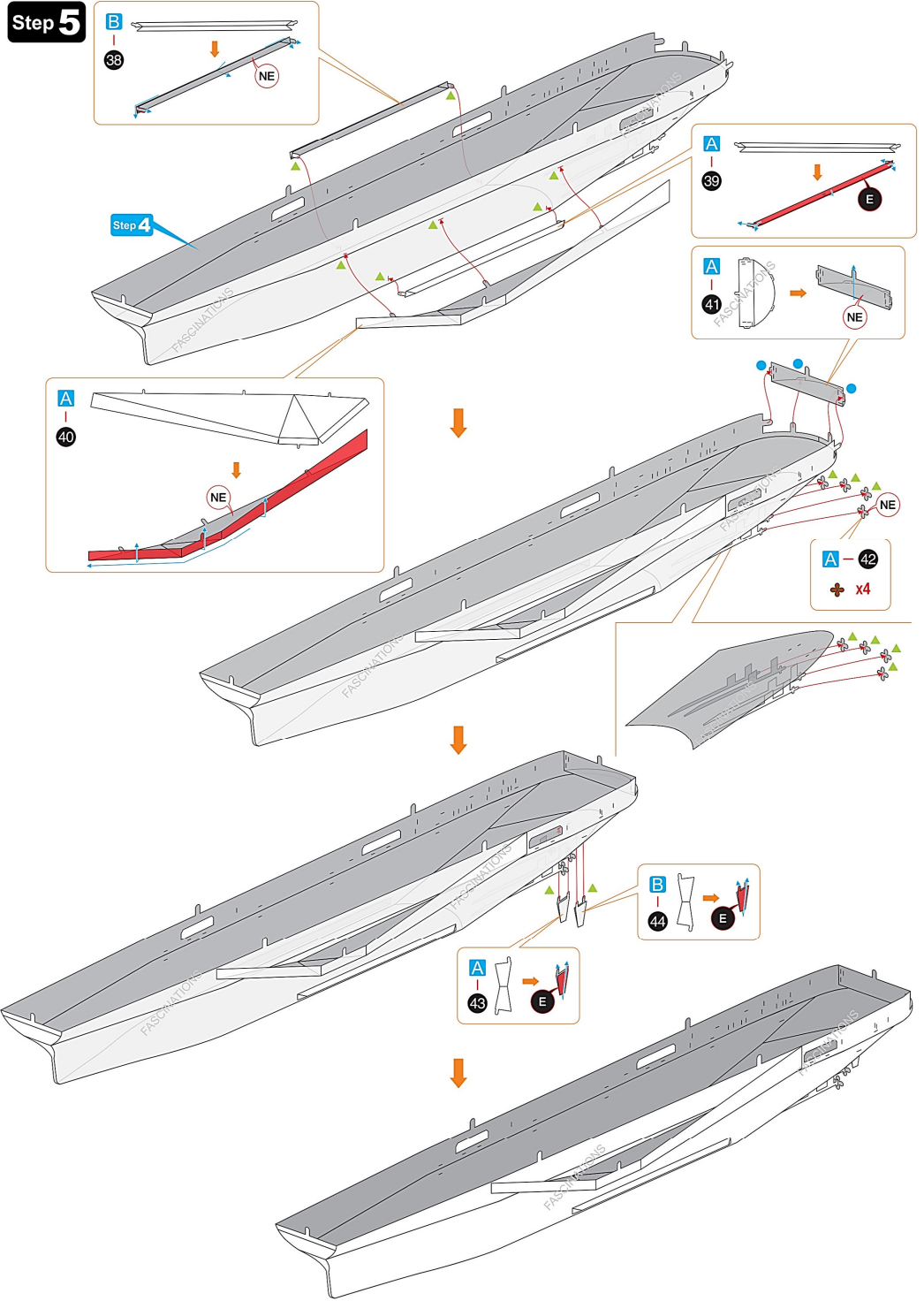




Step 4



Step 5



Step 6

