

© MARVEL

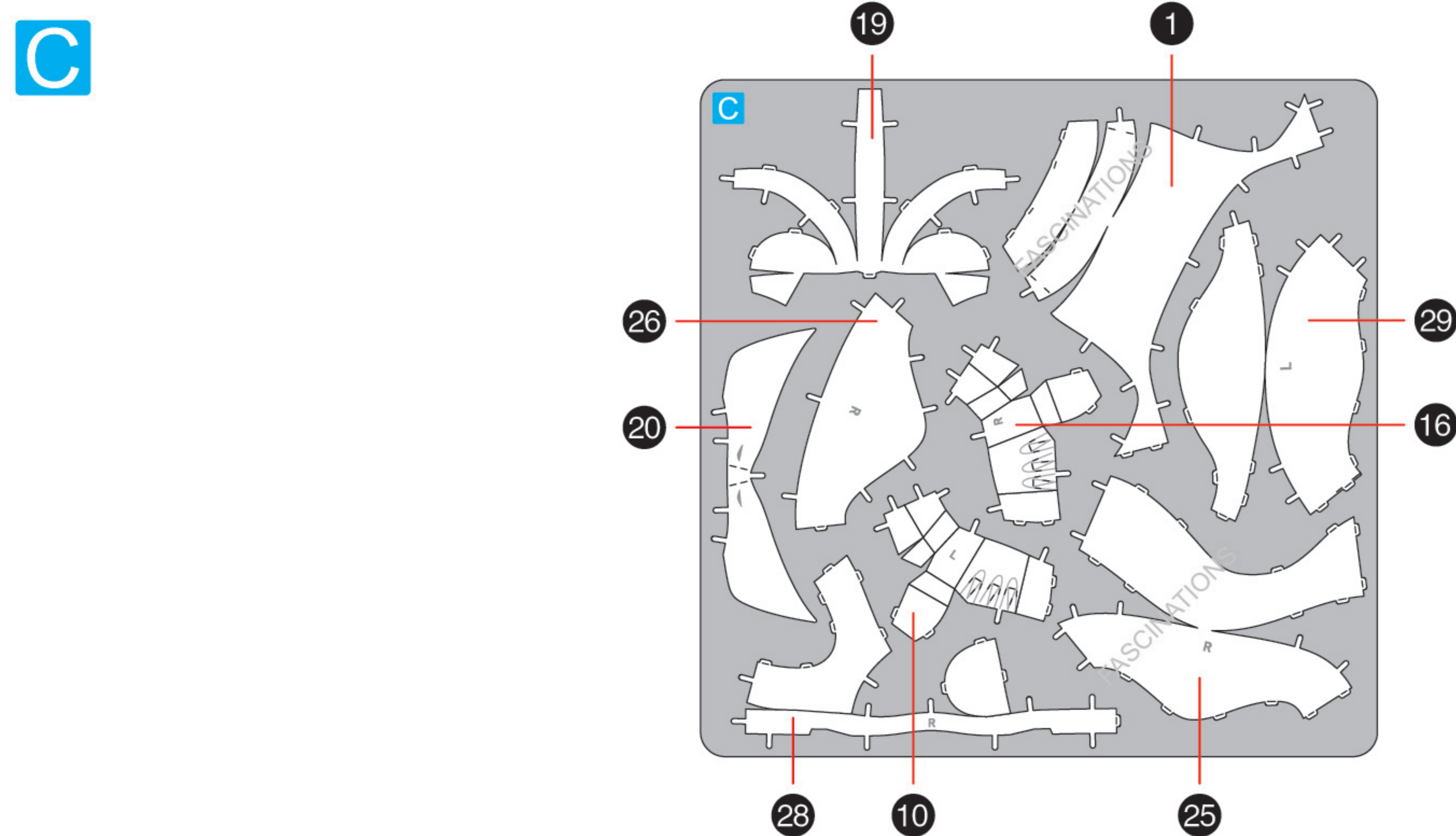
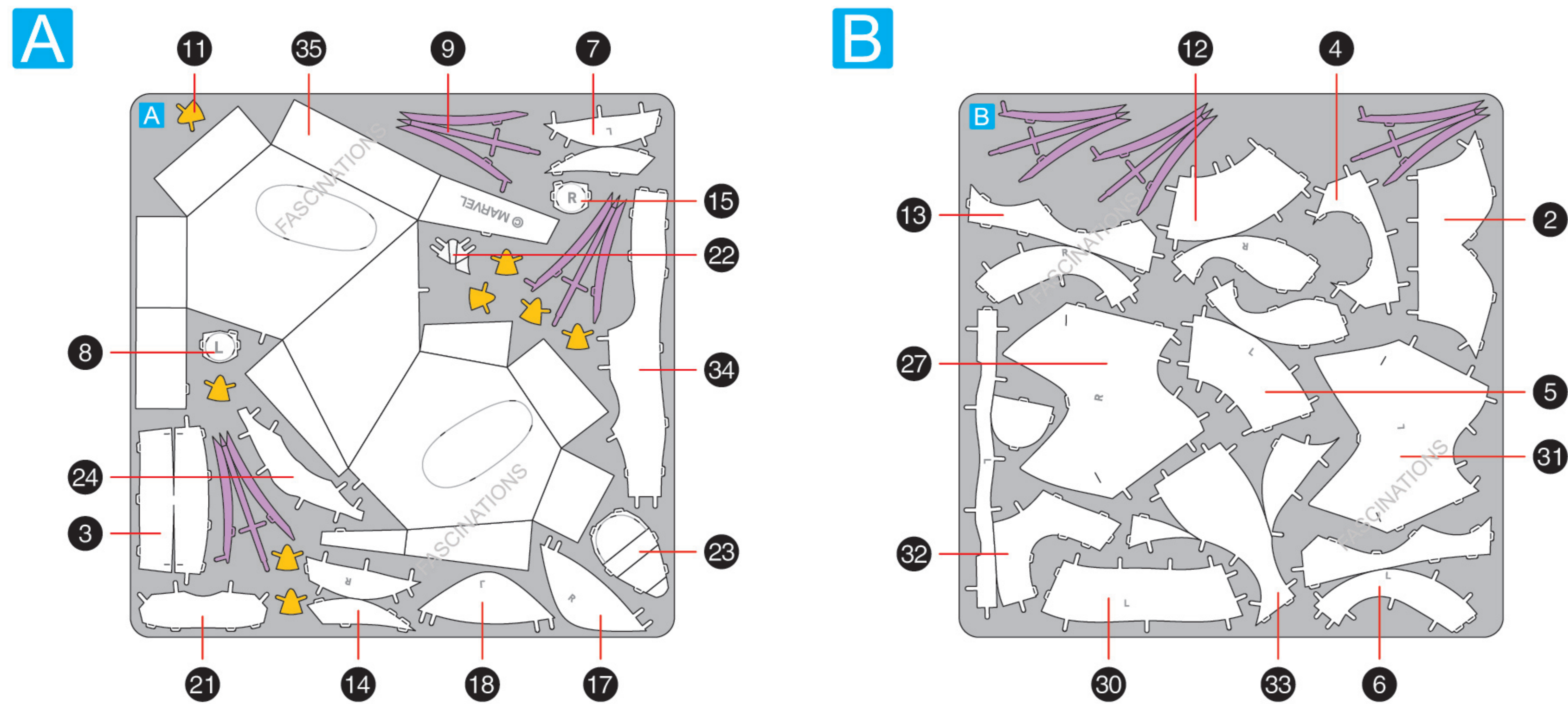
WOLVERINE MMS481

It is highly recommended that you visit www.metalearth.com/360/MMS481 to see the completed model before assembling your own



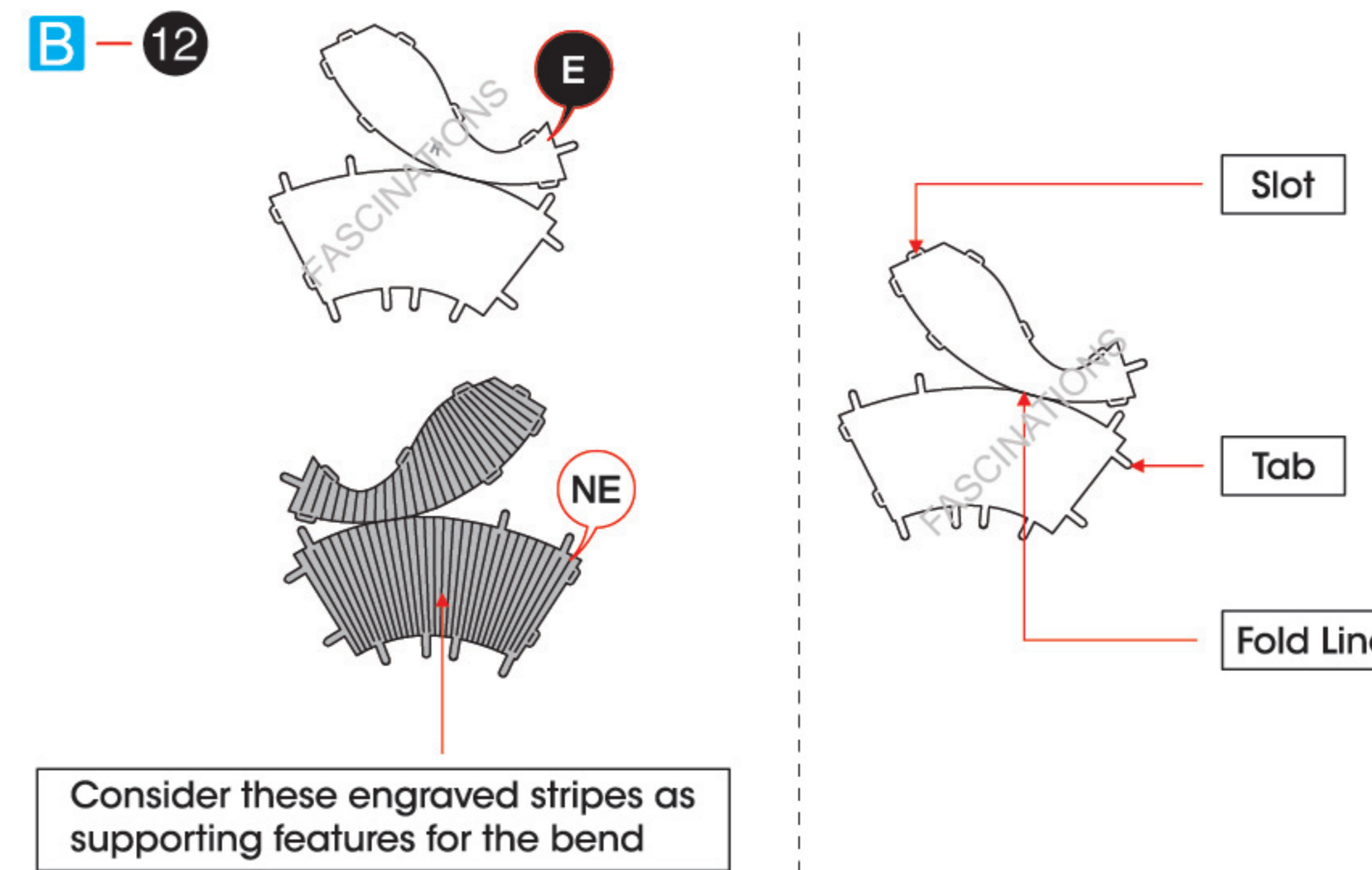
METAL SHEETS

Parts with same color are duplicates



In order to avoid possible injury from sharp edges, please carefully discard the metal sheets after parts have been removed.

TO CREATE THE BEST CONNECTIONS



Legends:

- E** Engraved/ Color side
- NE** Non - engraved/ Silver side
- Attention point
- Insert tab and bend 90 degrees
- Insert tab and twist 90 degrees

Recommended tools:

- Wire cutters: helpful for taking parts from the metal sheets.

- Tweezers or needle nose pliers: helpful for folding parts, bending and twisting tabs.

Assembly tip:

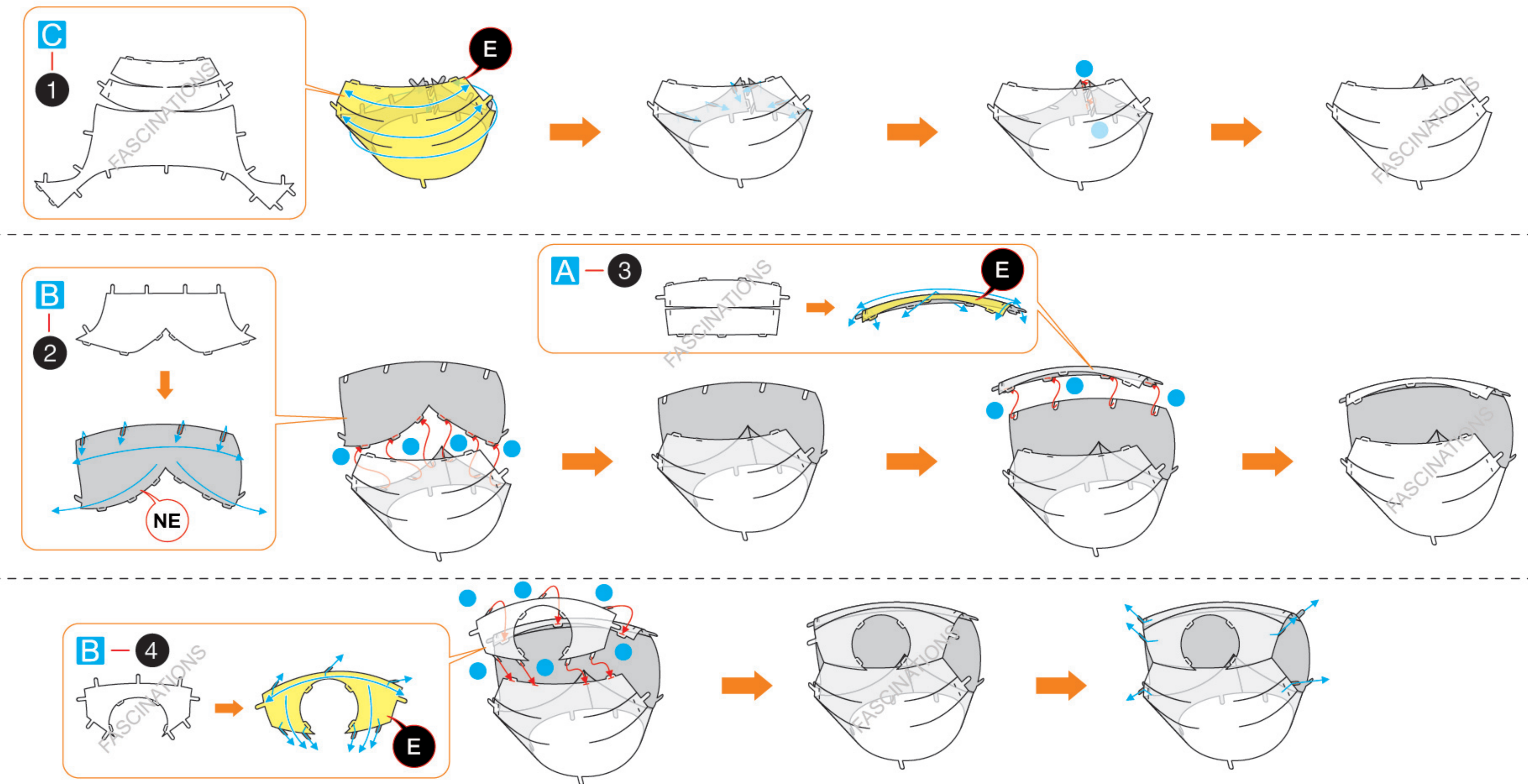
If needed, slightly twist tabs to hold parts together then untwist and bend them down for a nice finish.

Yellow areas should be curled

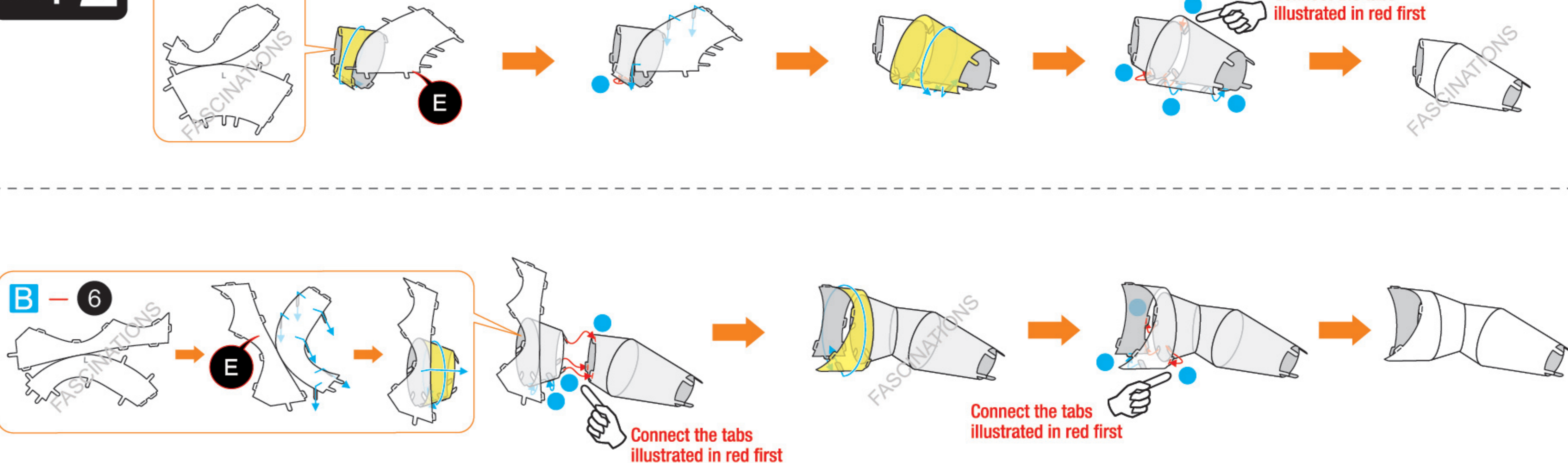
Red areas should be folded

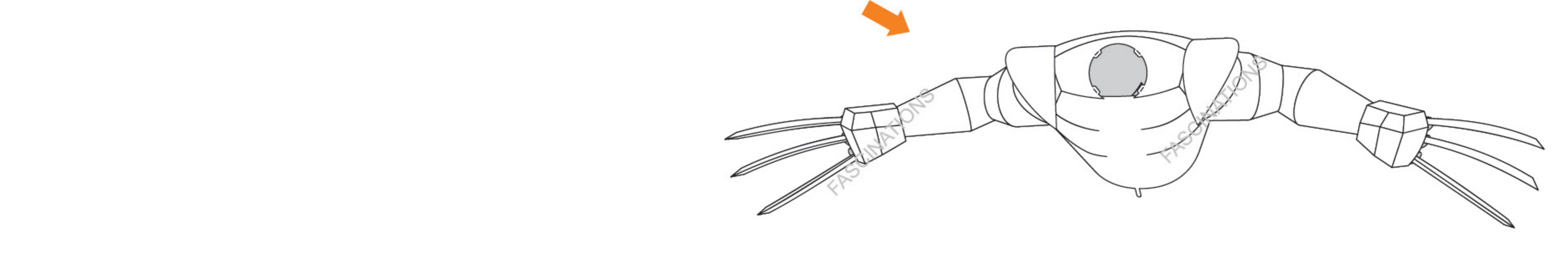
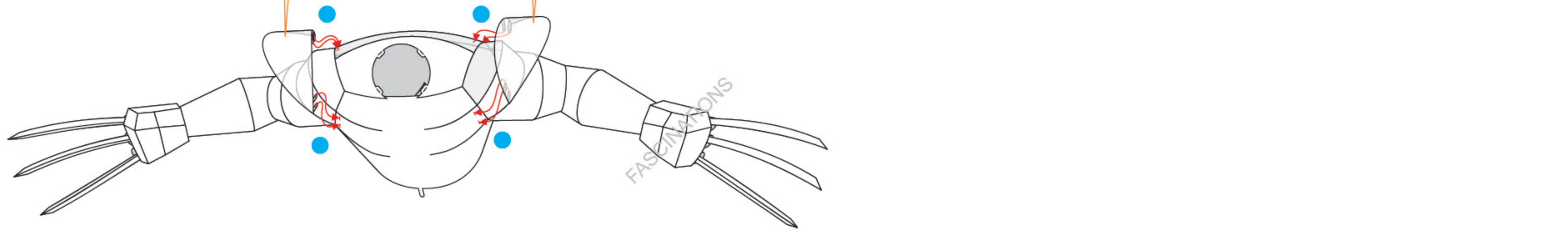
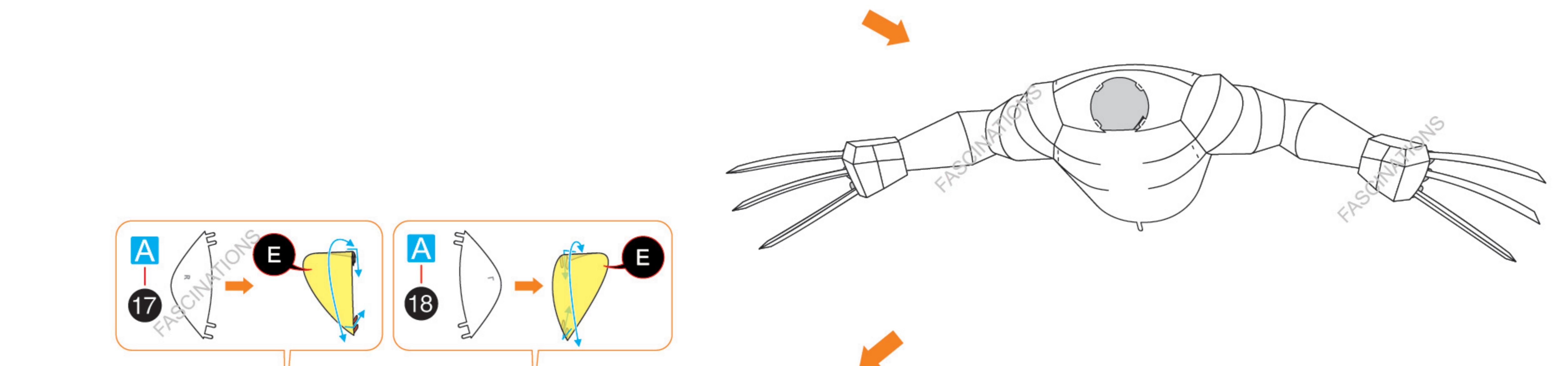
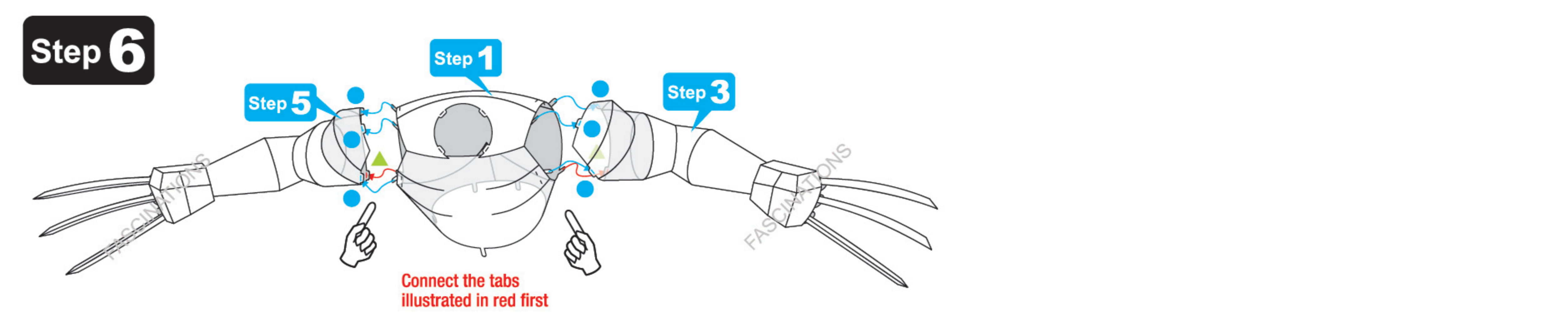
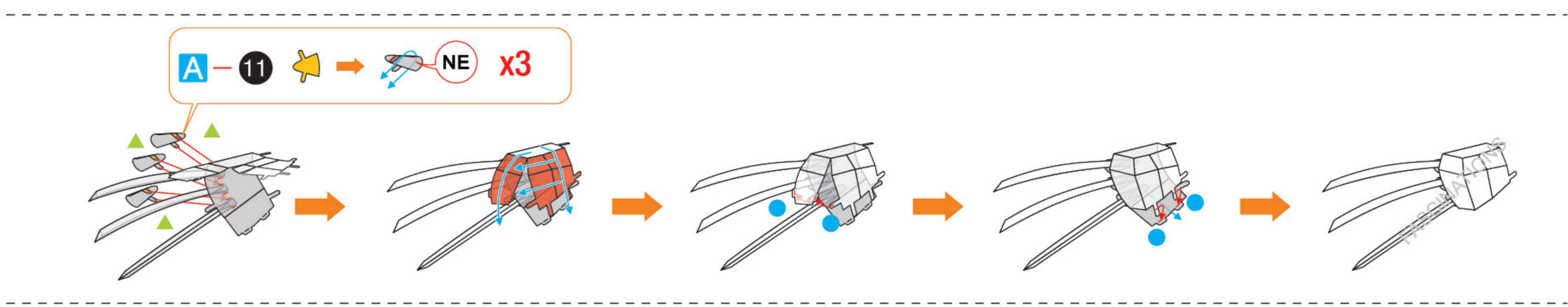
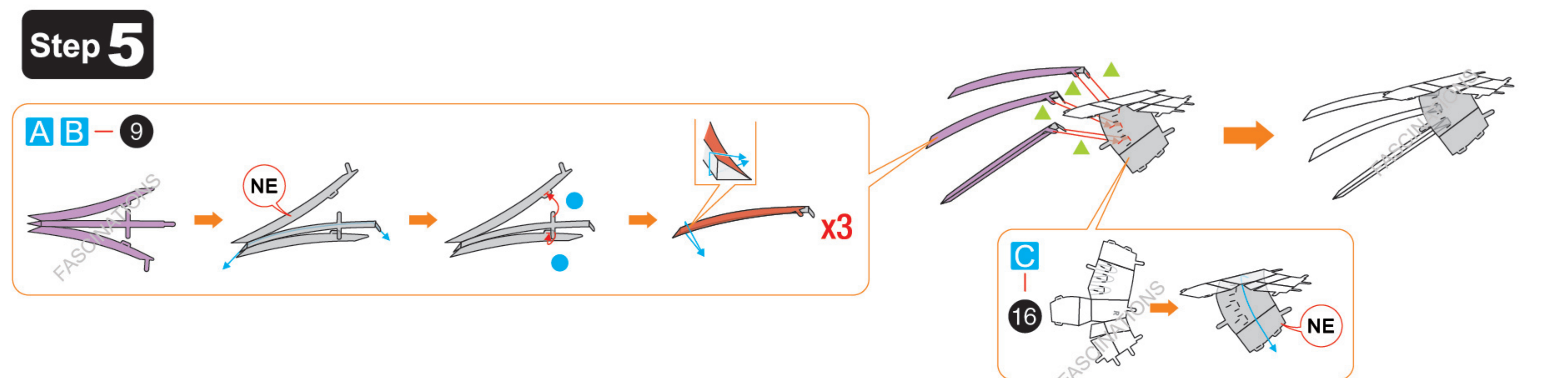
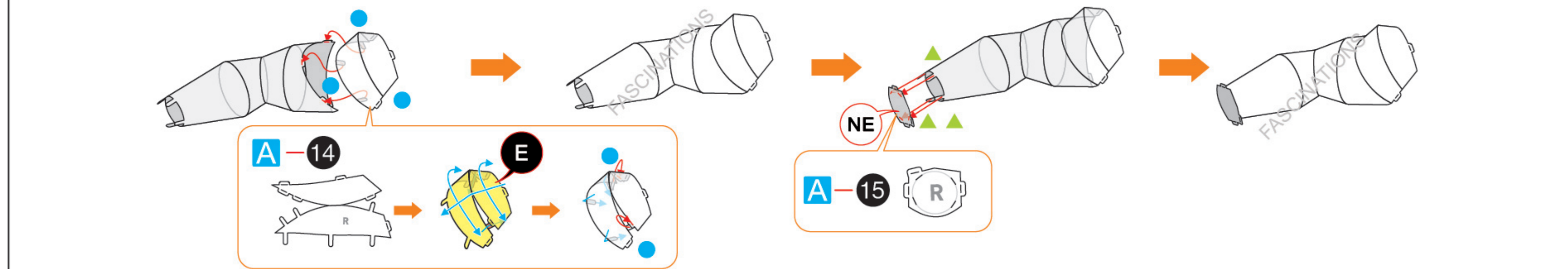
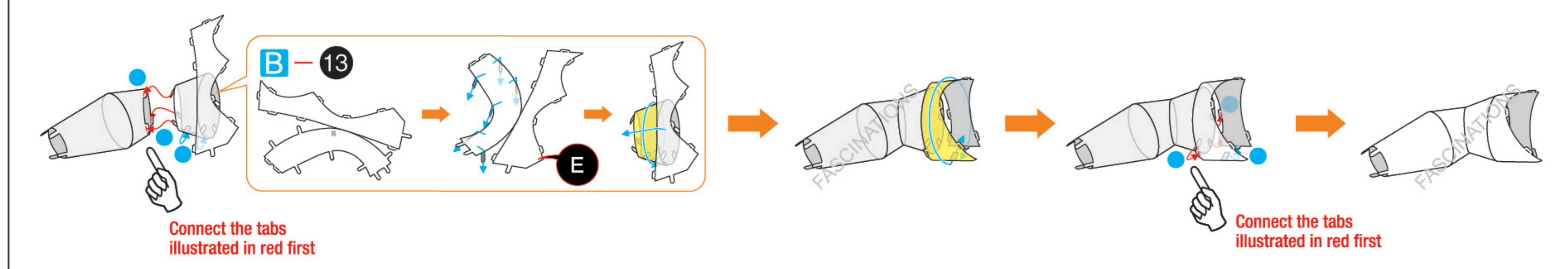
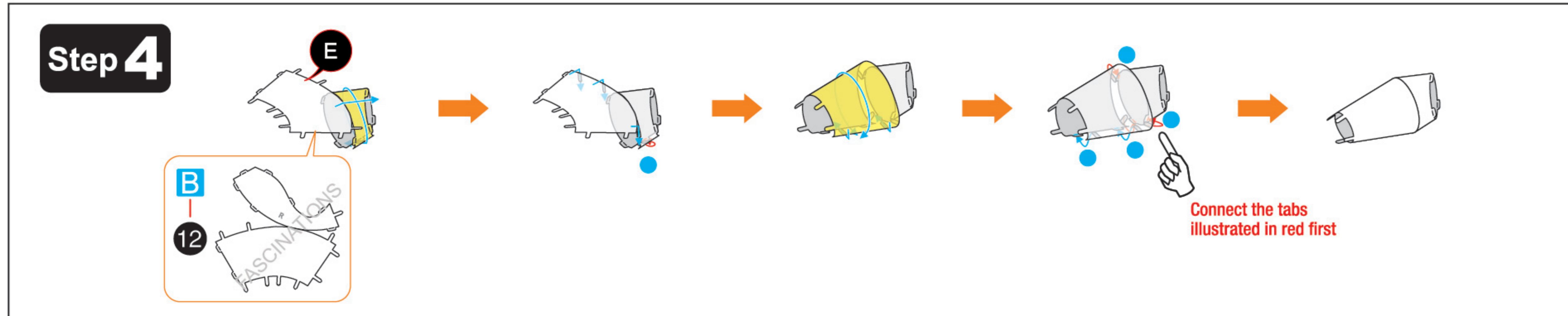
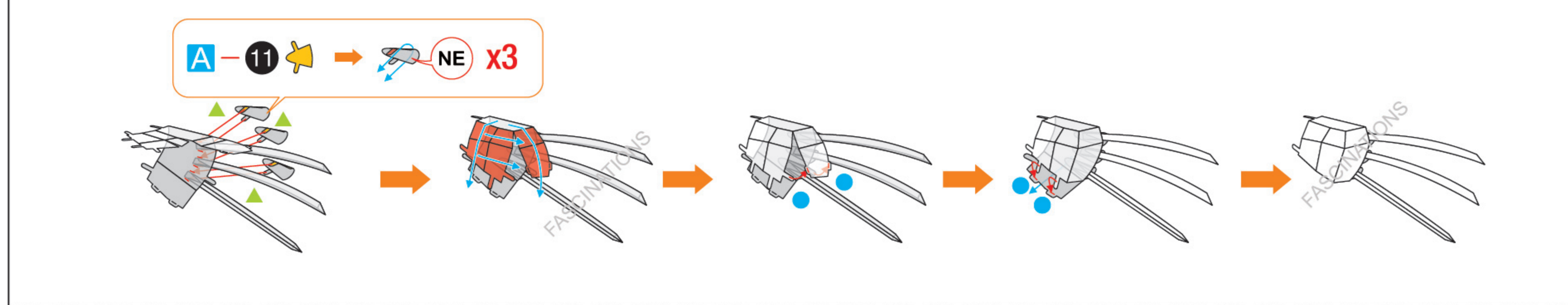
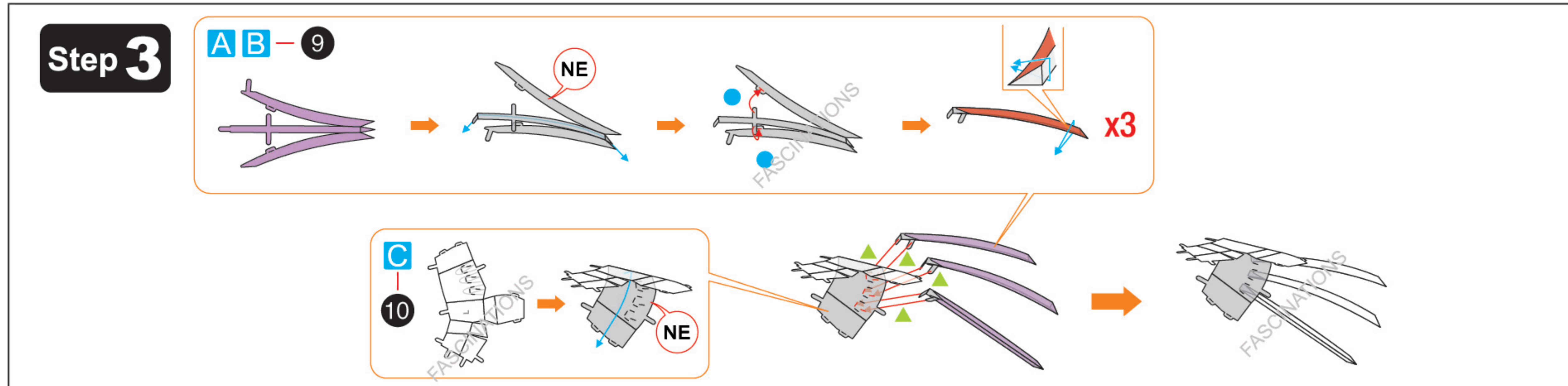
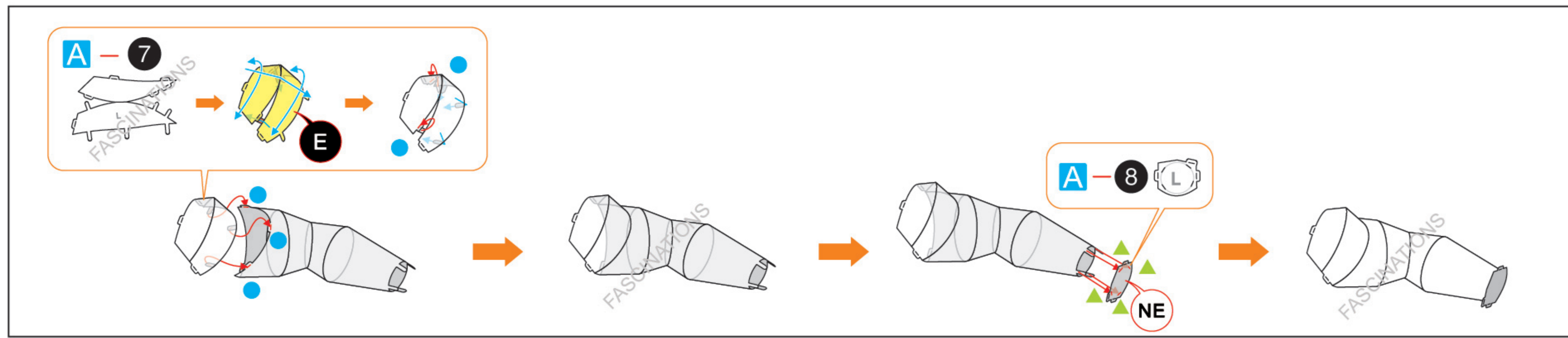
ASSEMBLY FLOW CHART

Step 1

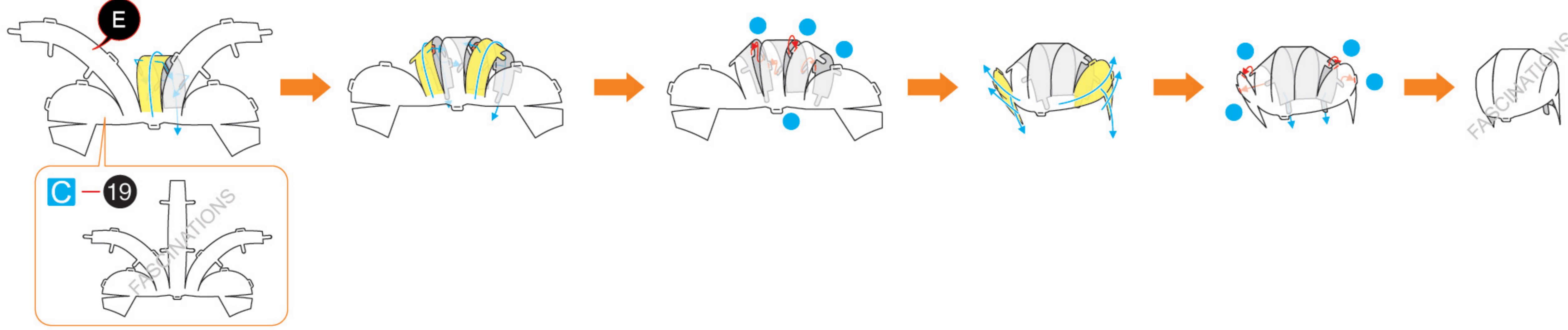


Step 2

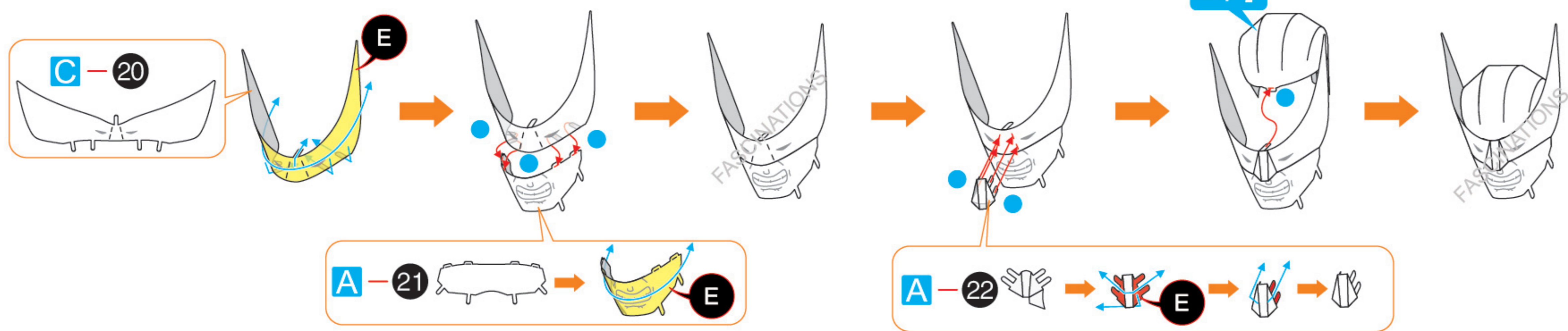




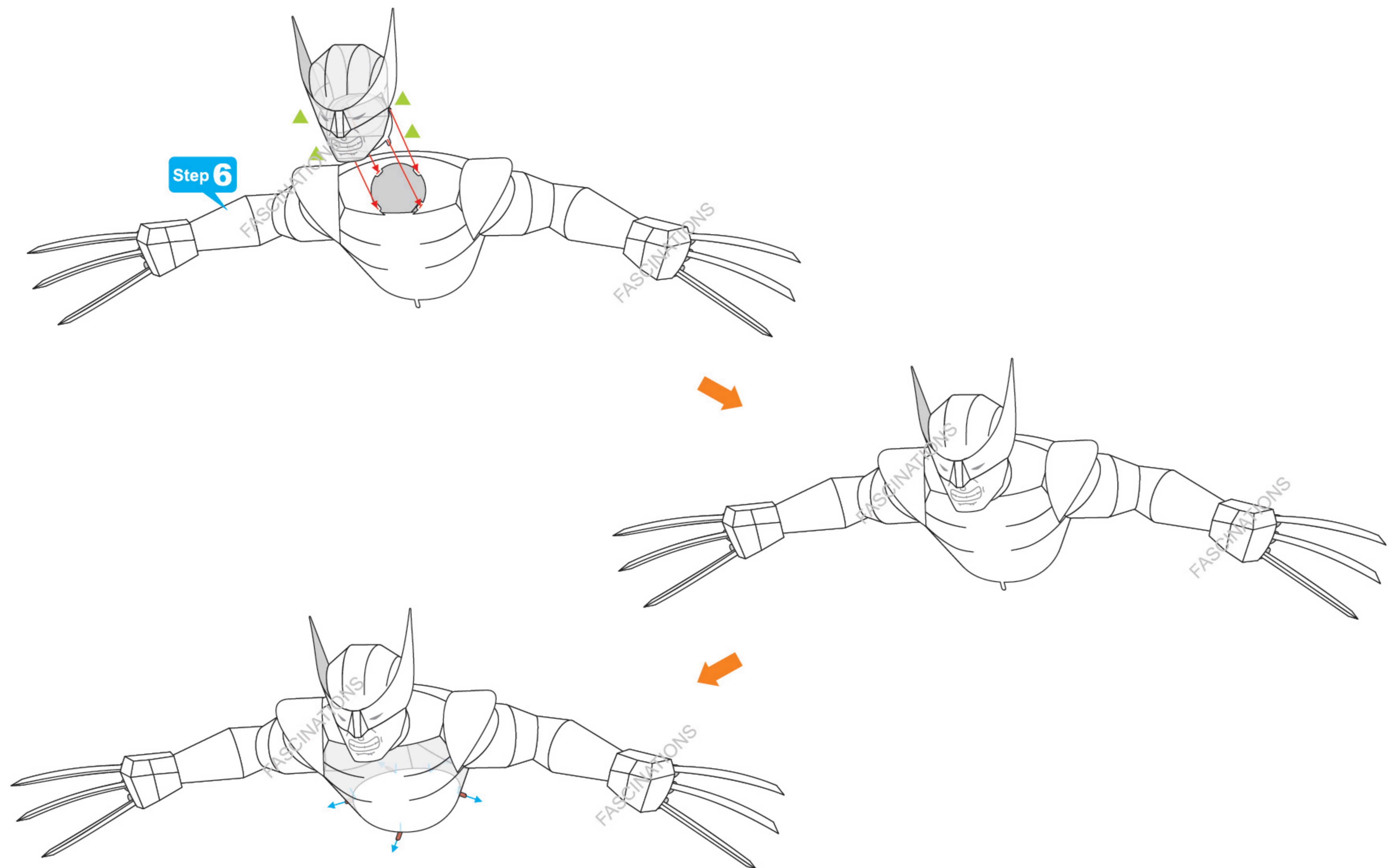
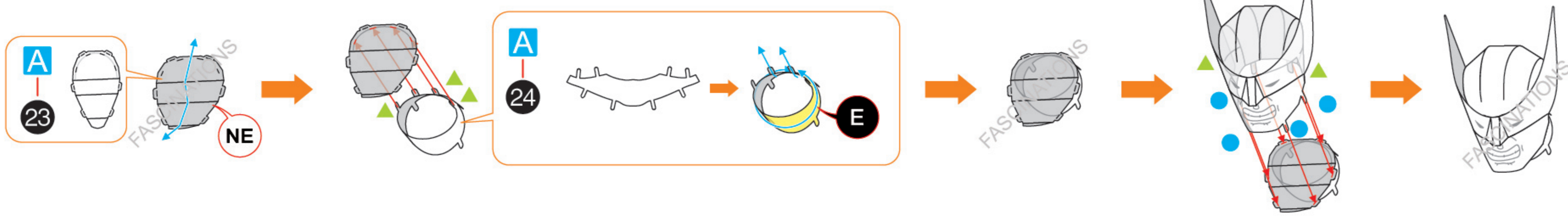
Step 7



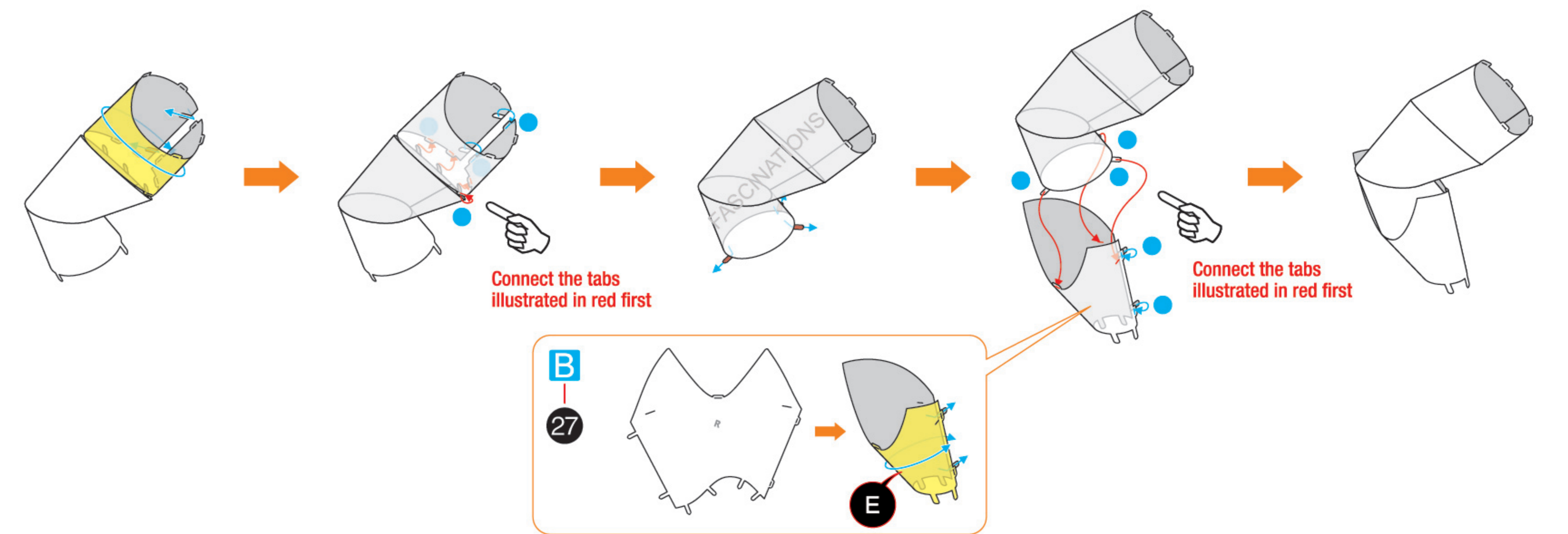
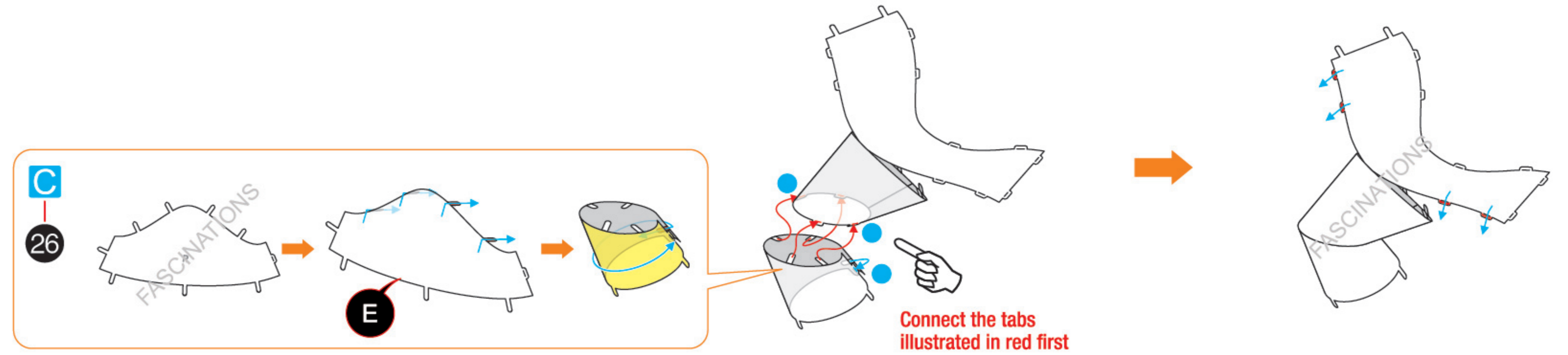
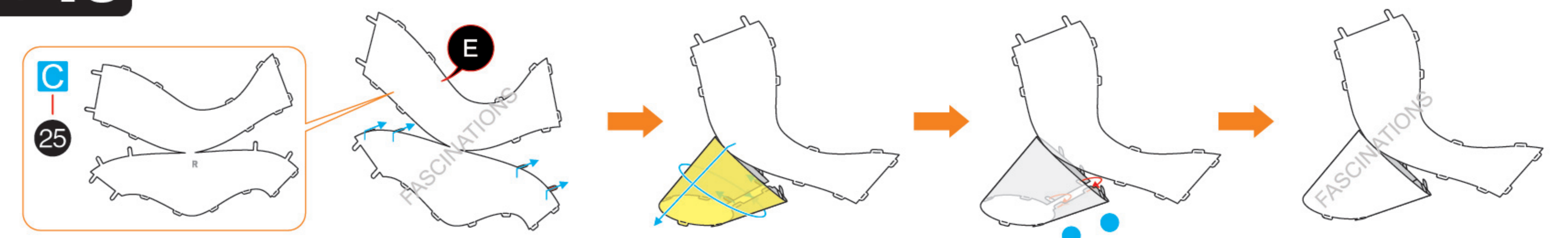
Step 8



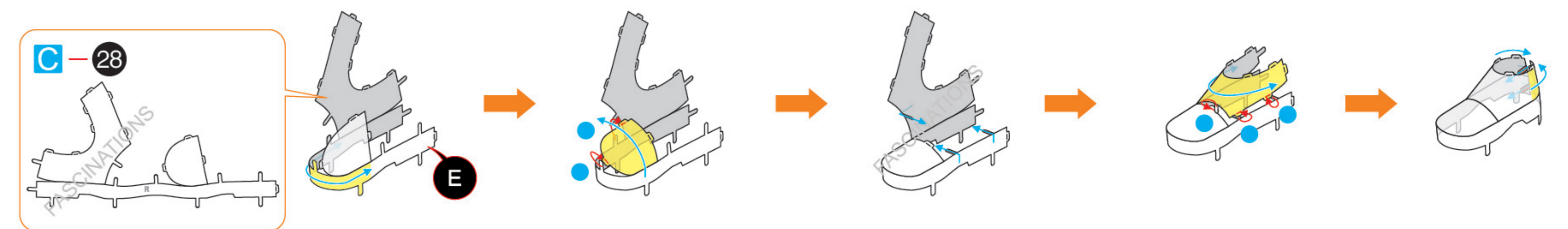
Step 9



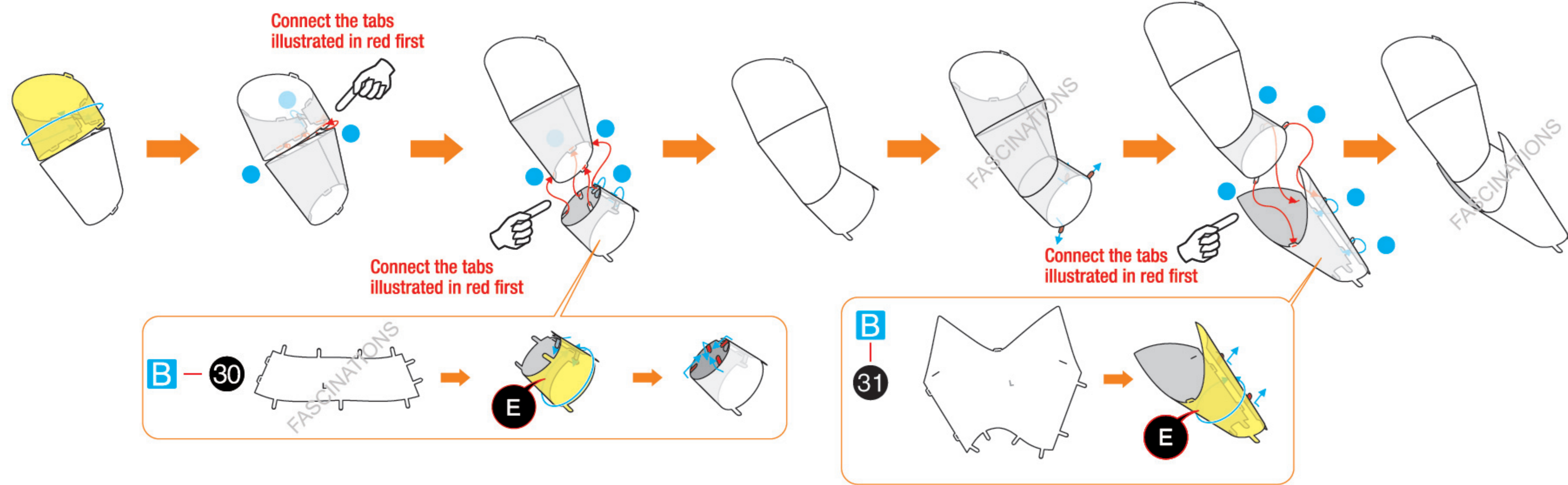
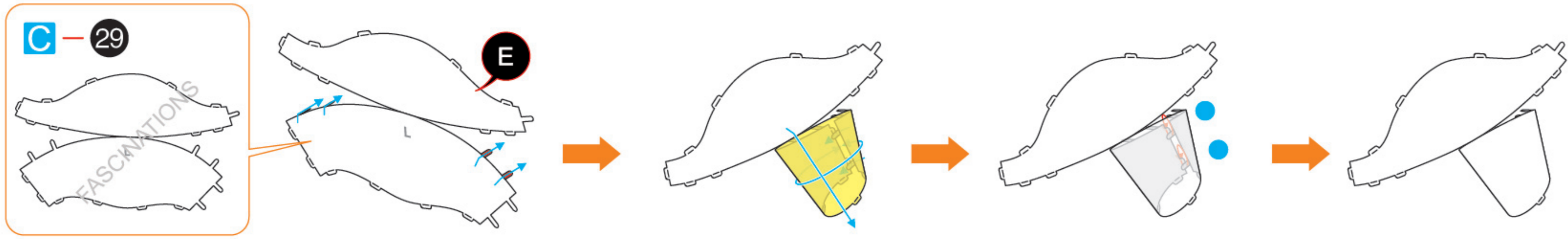
Step 10



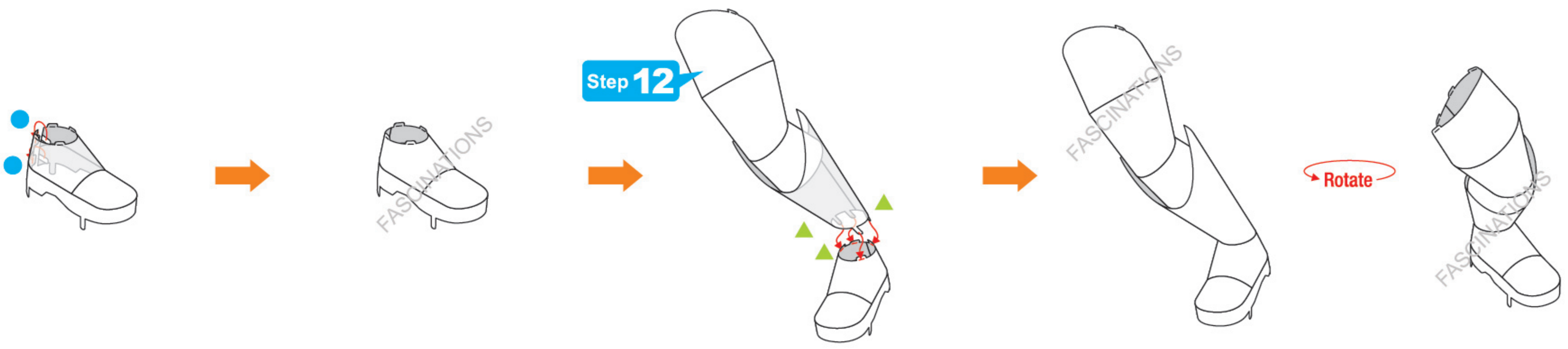
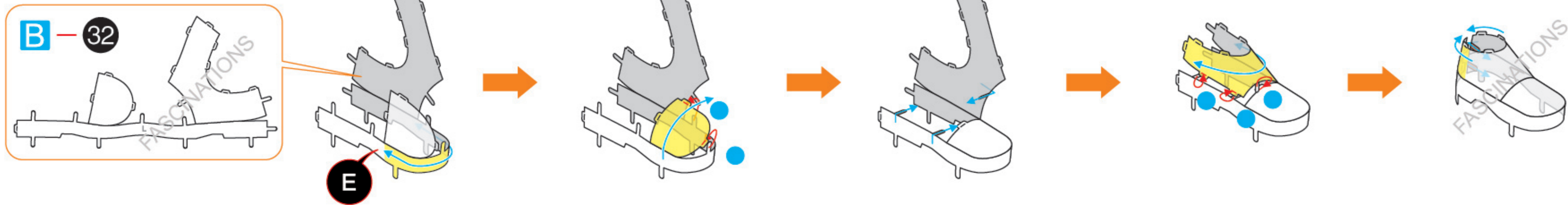
Step 11



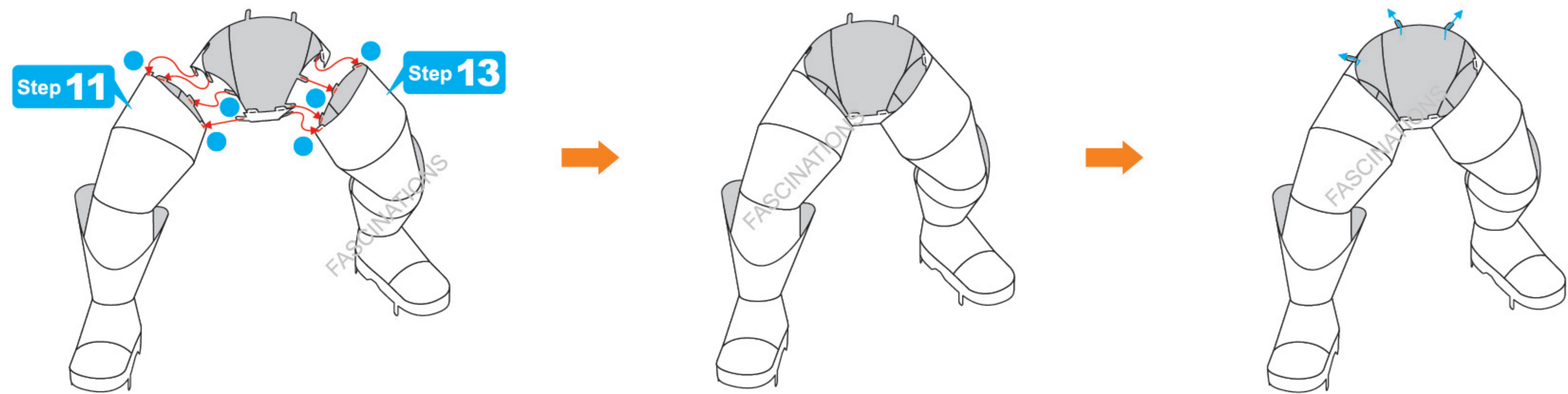
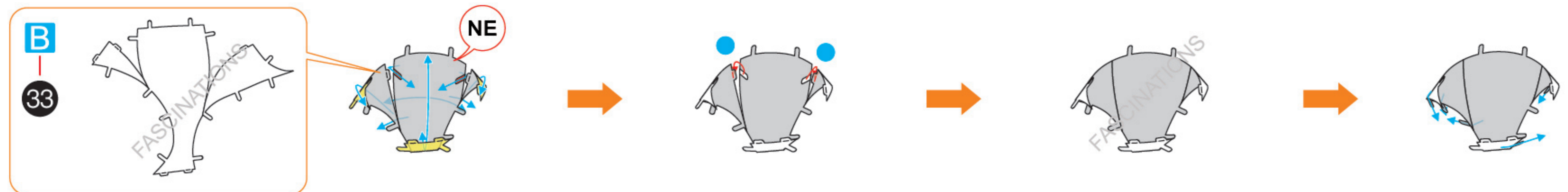
Step 12



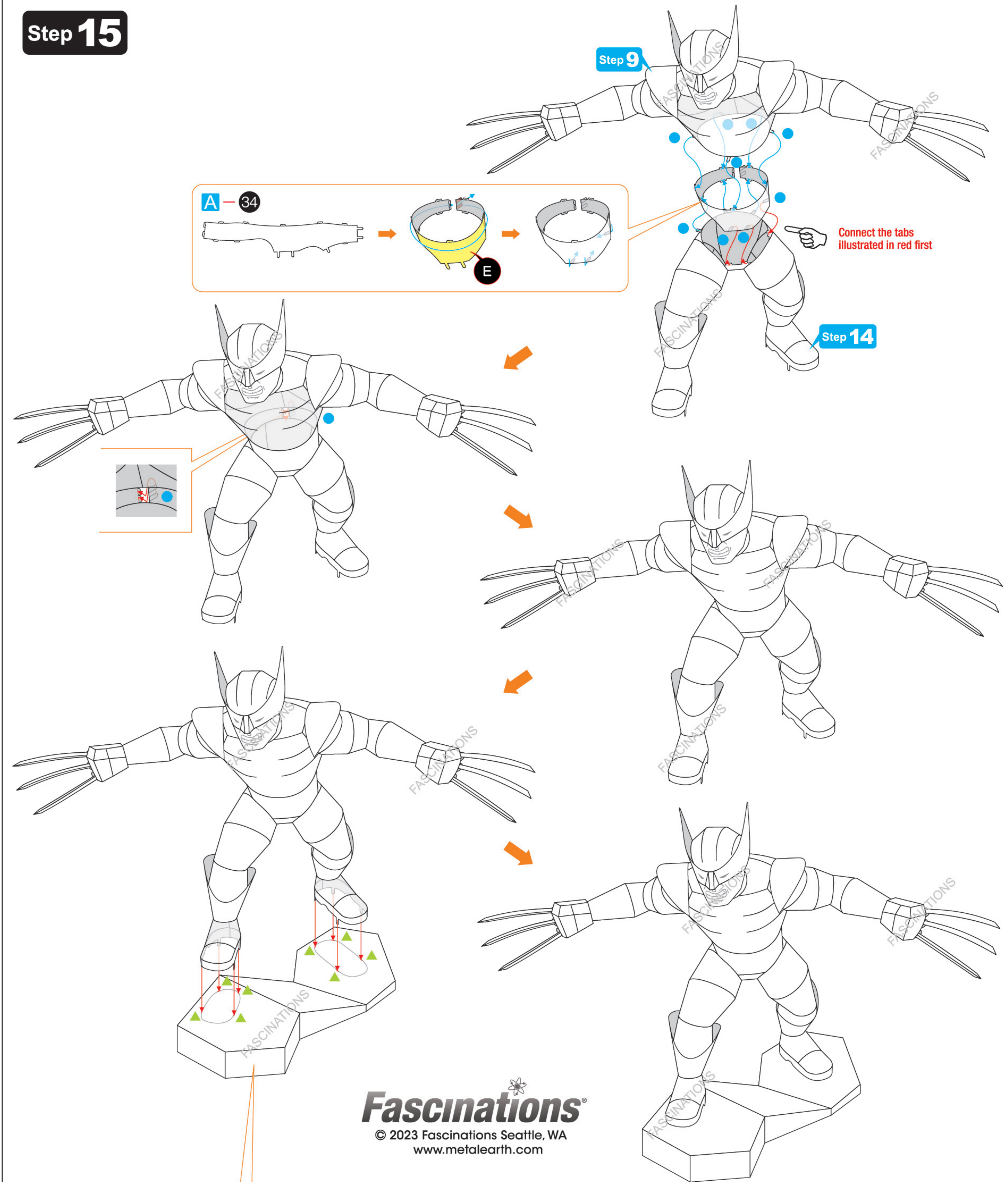
Step 13



Step 14



Step 15



Fascinations
 © 2023 Fascinations Seattle, WA
 www.metalearth.com

