

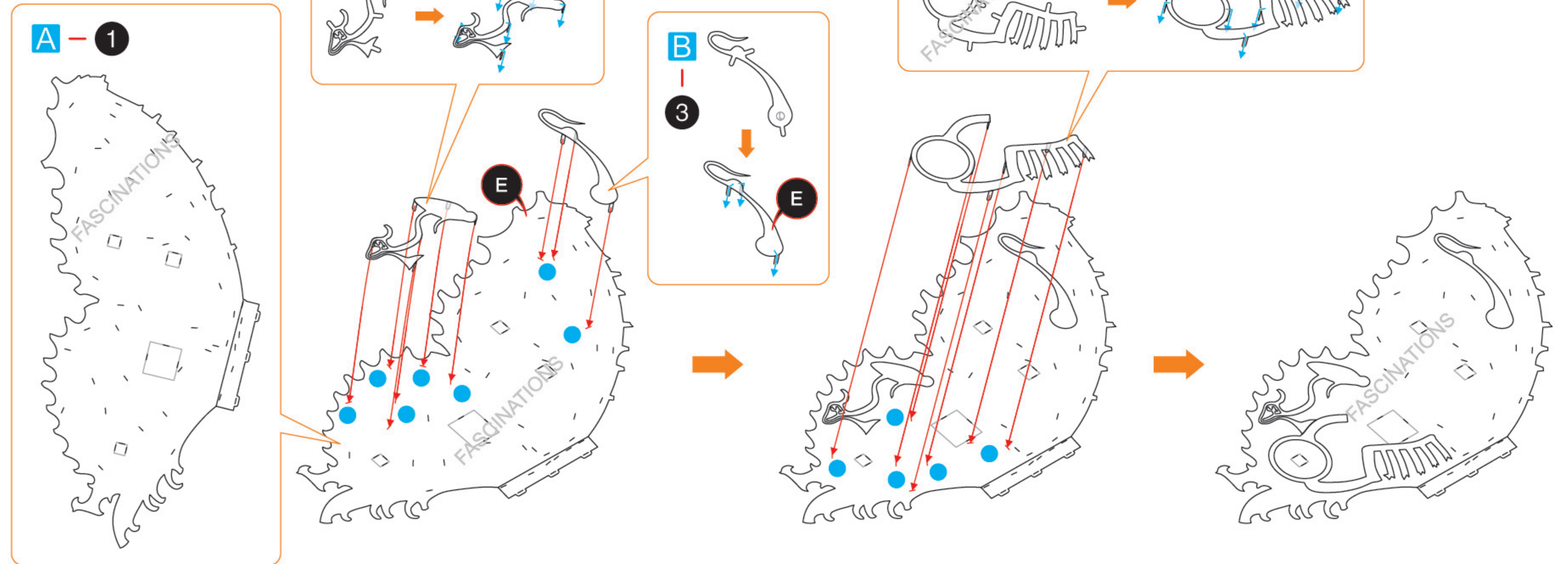
STEAMPUNK BUTTERFLY ME1021

It is highly recommended that you visit www.metalearth.com/360/ME1021 to see the completed model before assembling your own

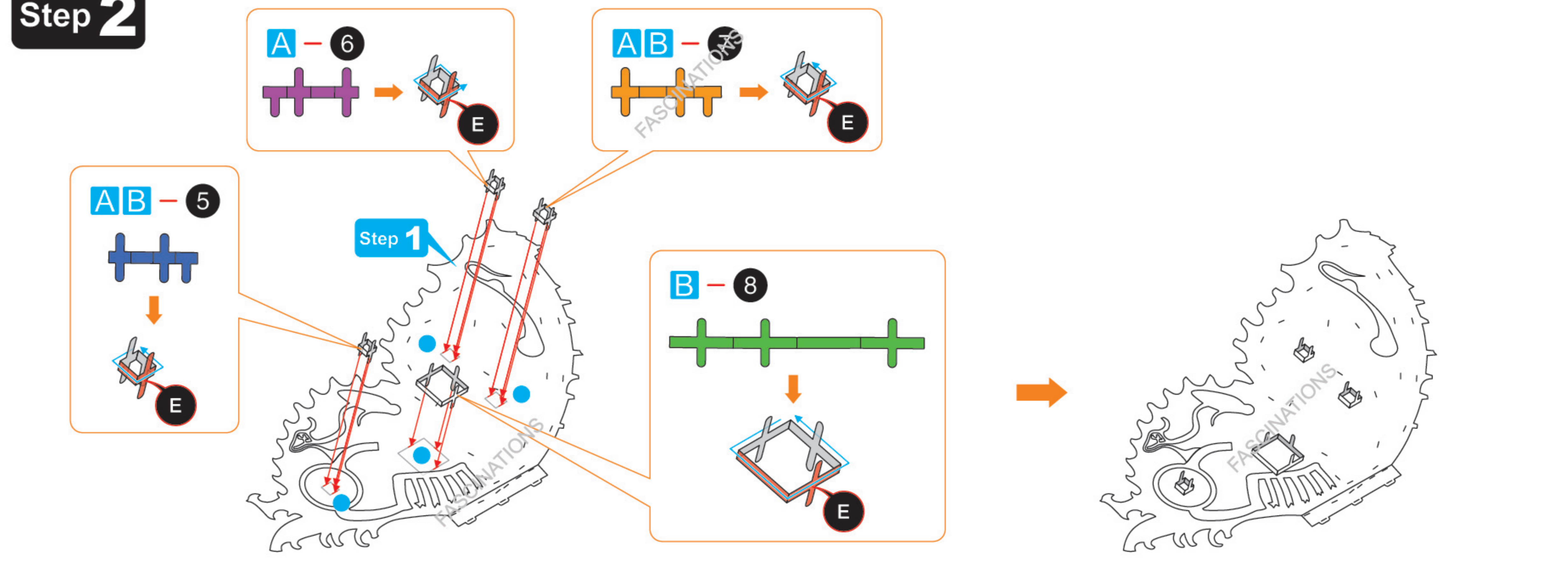


ASSEMBLY FLOW CHART

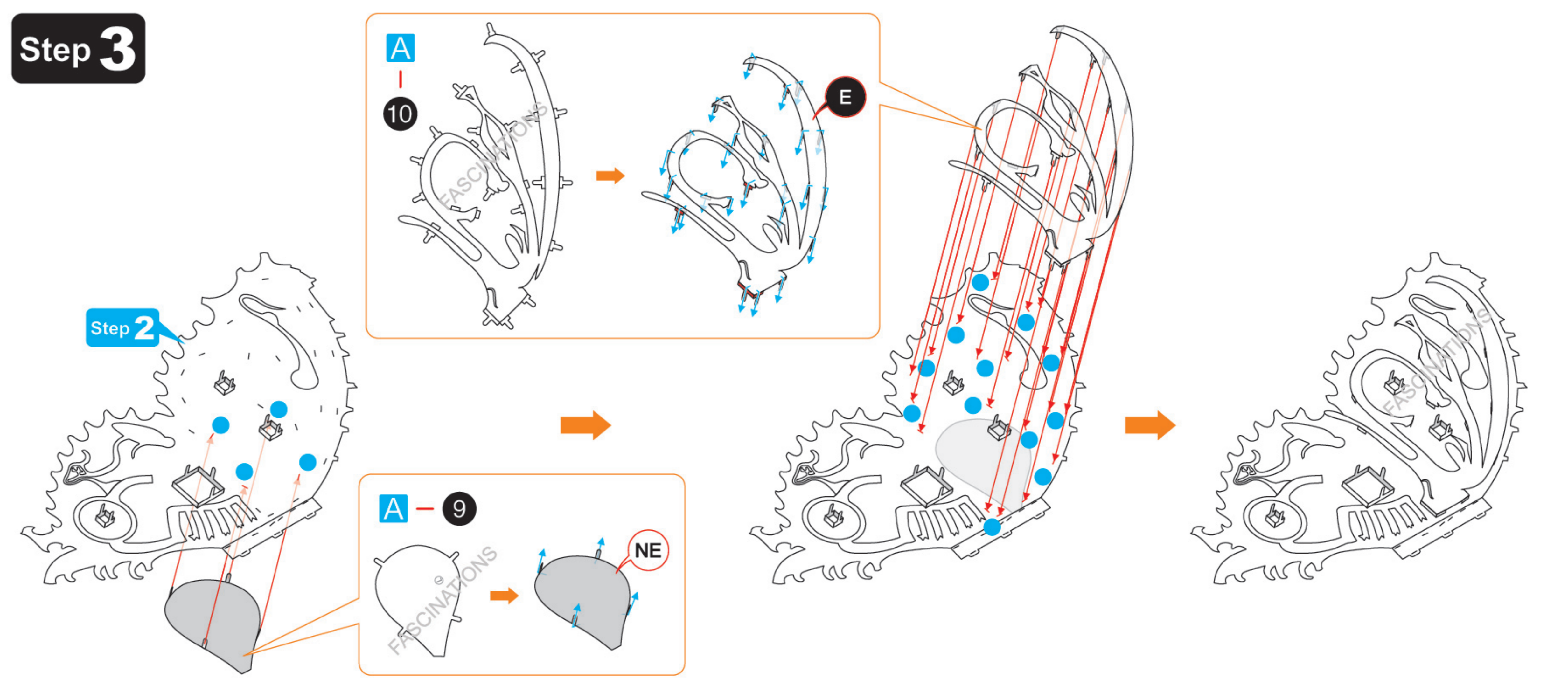
Step 1



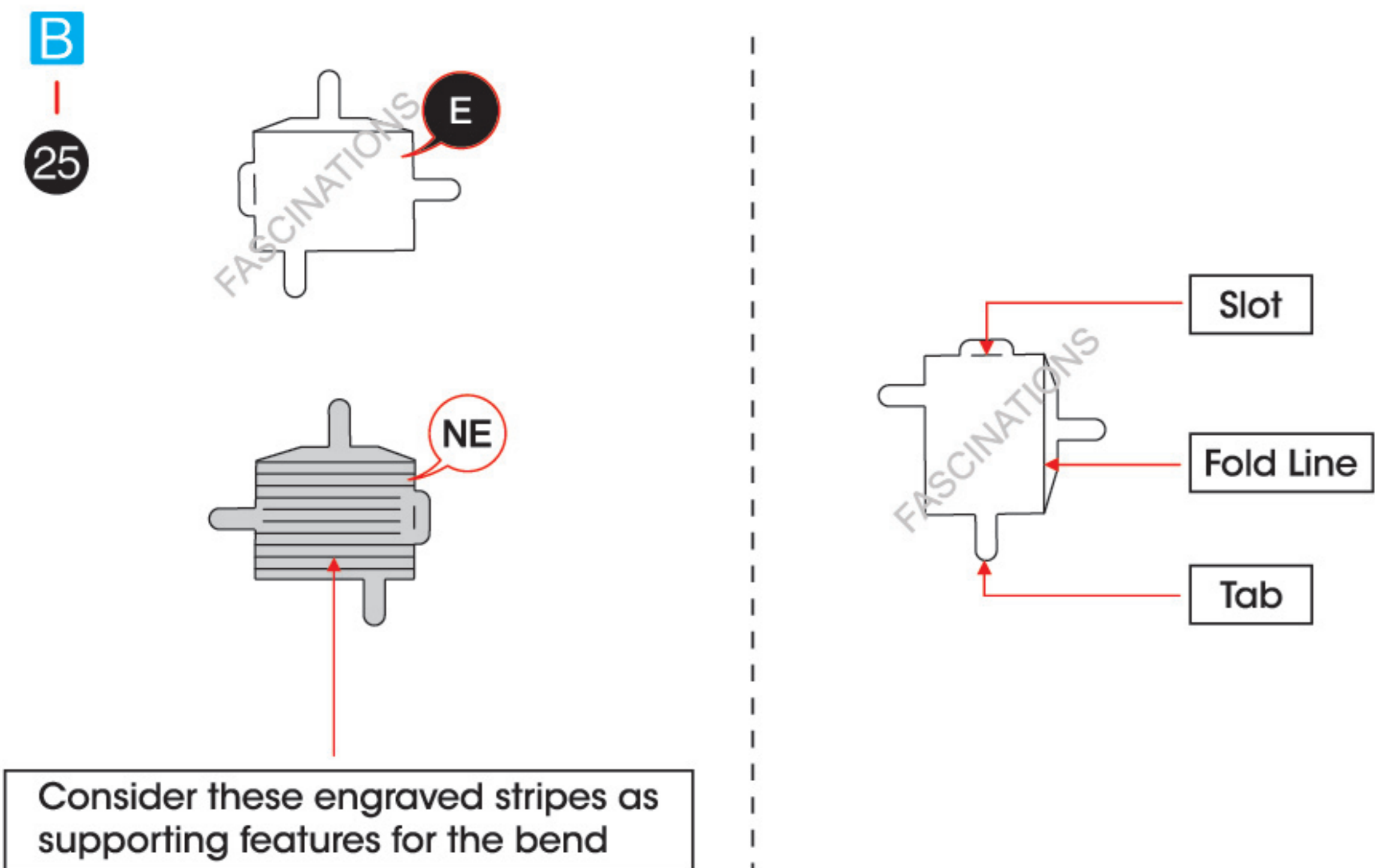
Step 2



Step 3



TO CREATE THE BEST CONNECTIONS



Legends:

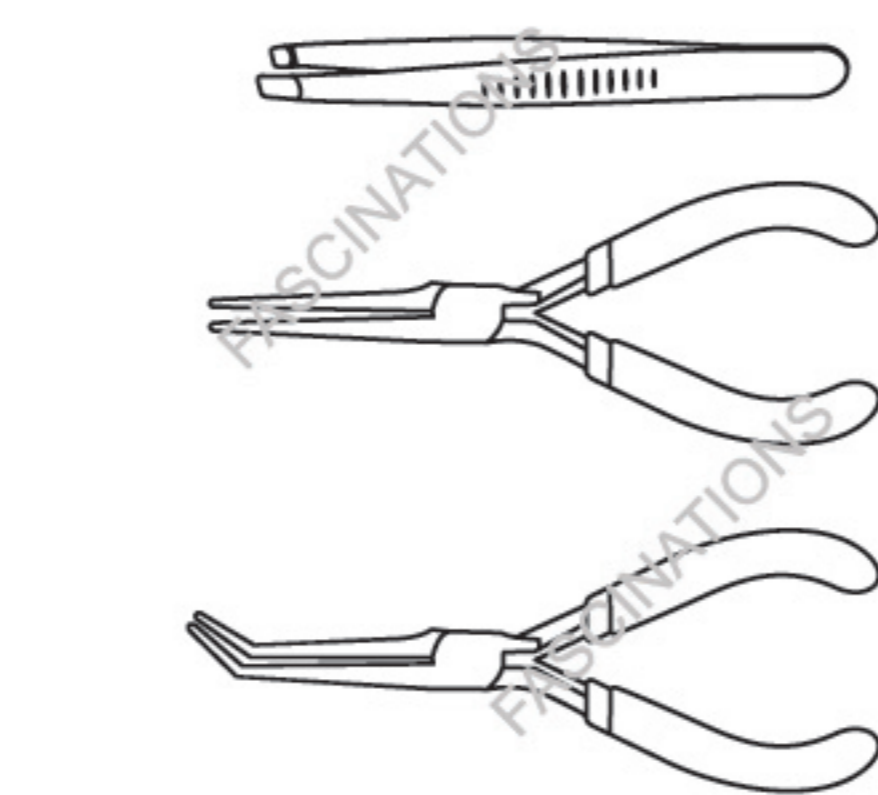
- Engraved/ Color side
- Non - engraved/ Silver side
- Attention point
- Insert tab and bend 90 degrees
- Insert tab and twist 90 degrees
- Yellow areas should be curled
- Red areas should be folded

Recommended tools:

- Wire cutters: helpful for taking parts from the metal sheets.



- Tweezers or needle nose pliers: helpful for folding parts, bending and twisting tabs.

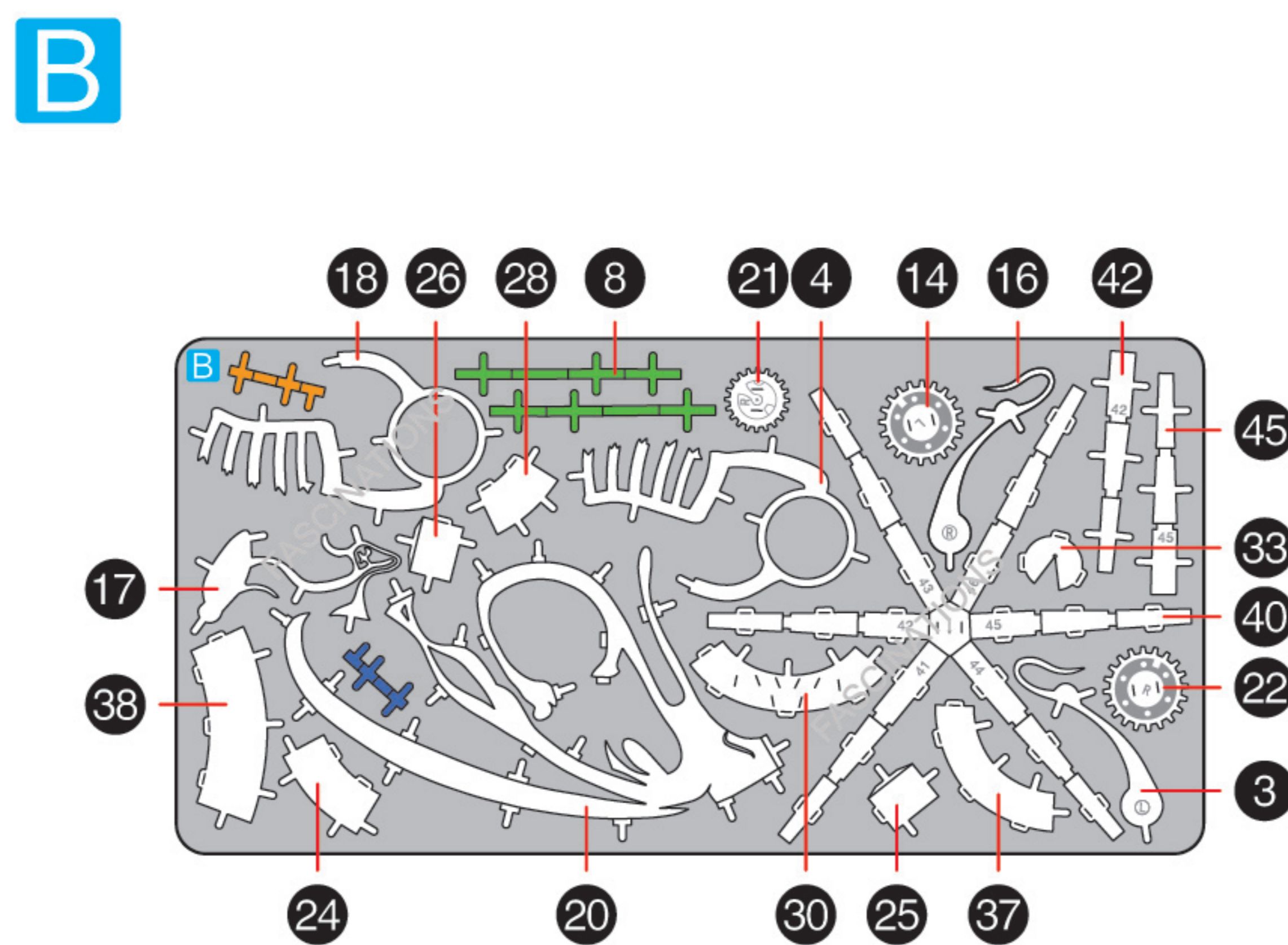
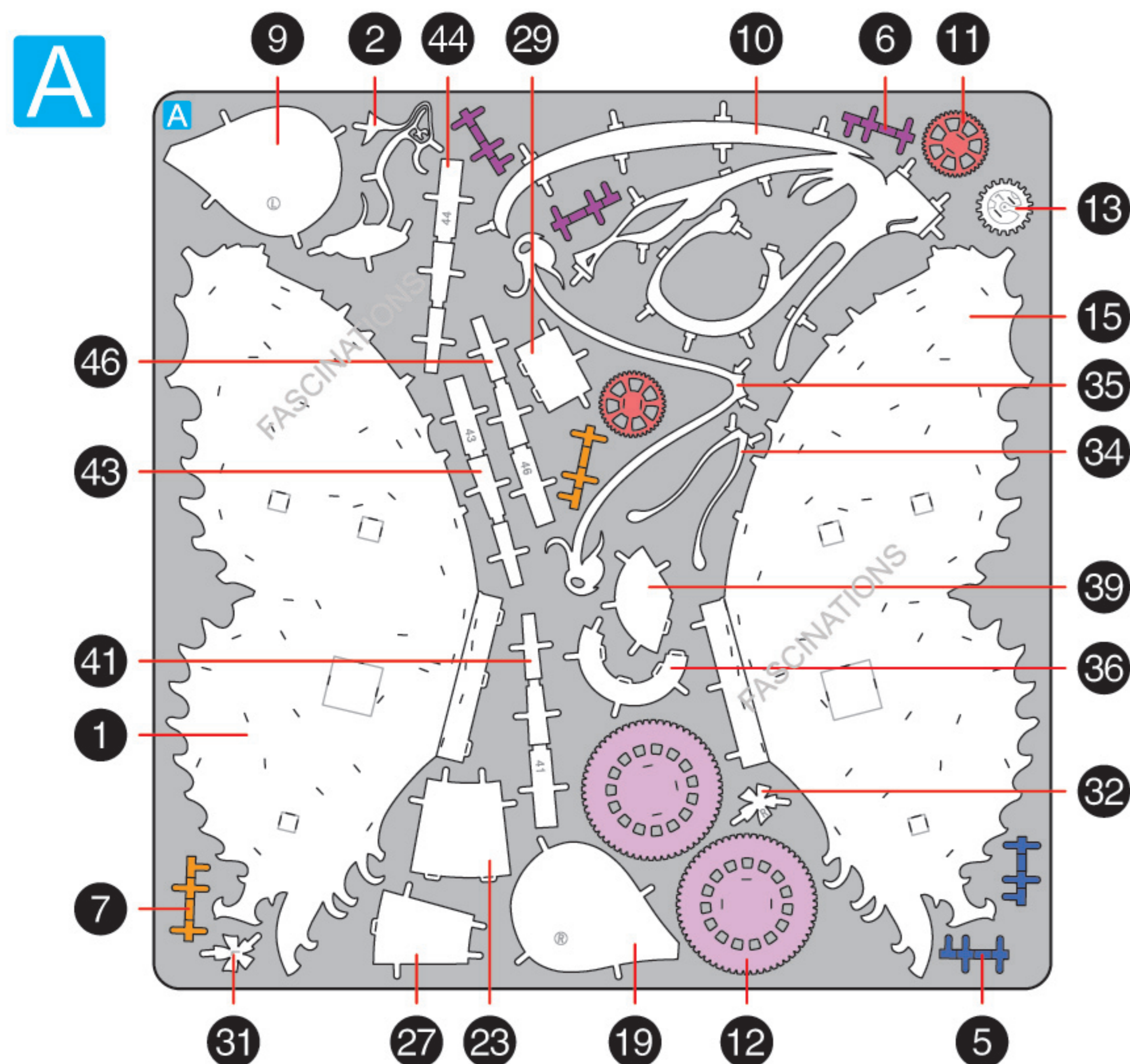


Assembly tip:

If needed, slightly twist tabs to hold parts together then untwist and bend them down for a nice finish.

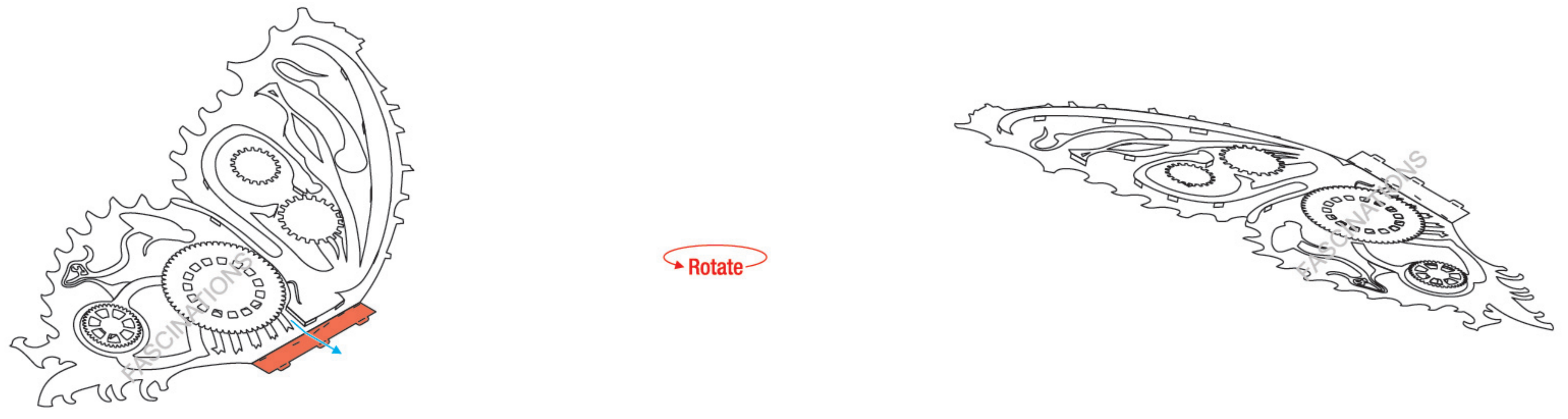
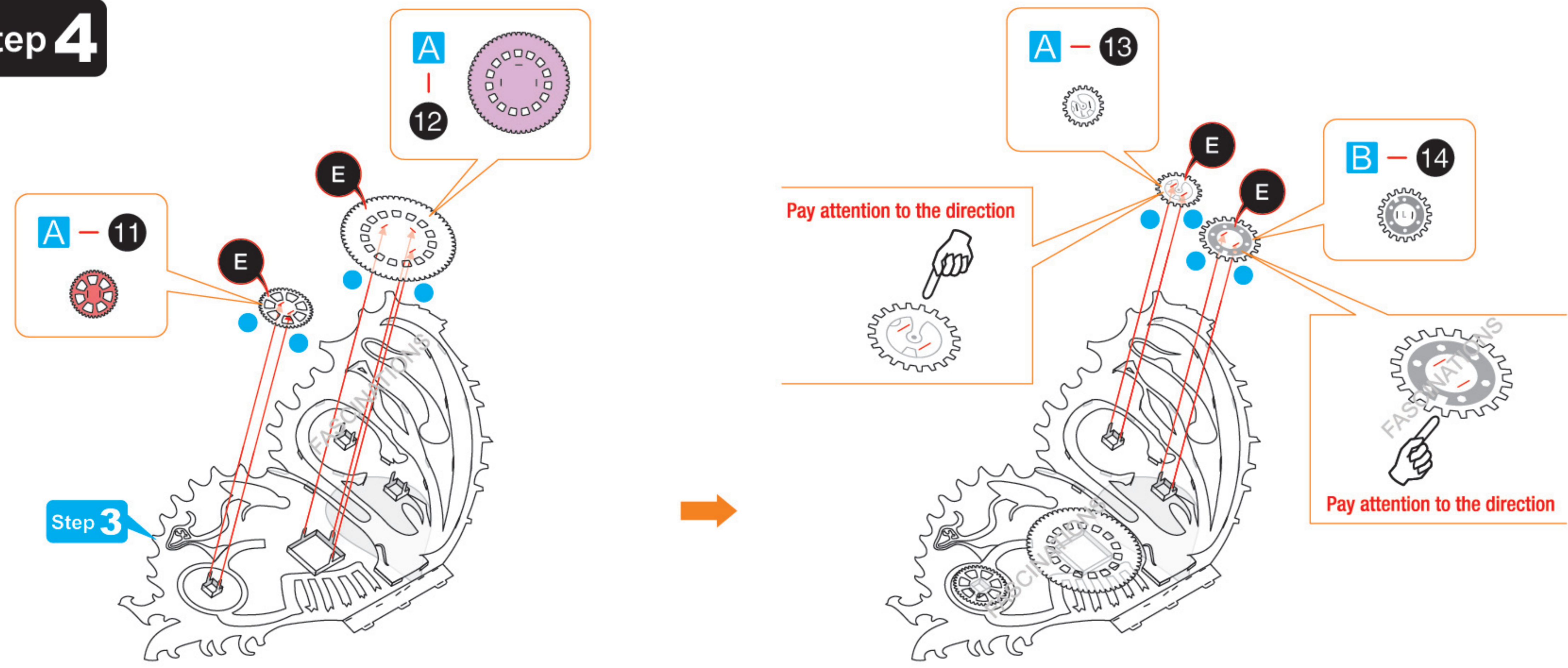
METAL SHEETS

Parts with same color are duplicates

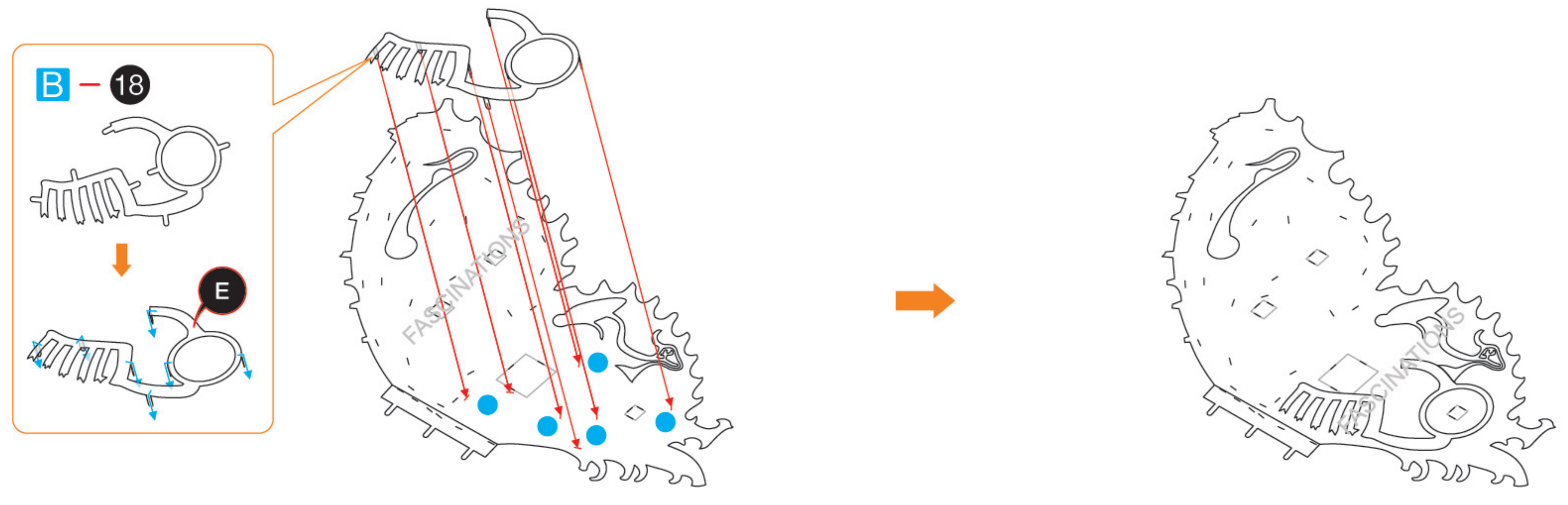
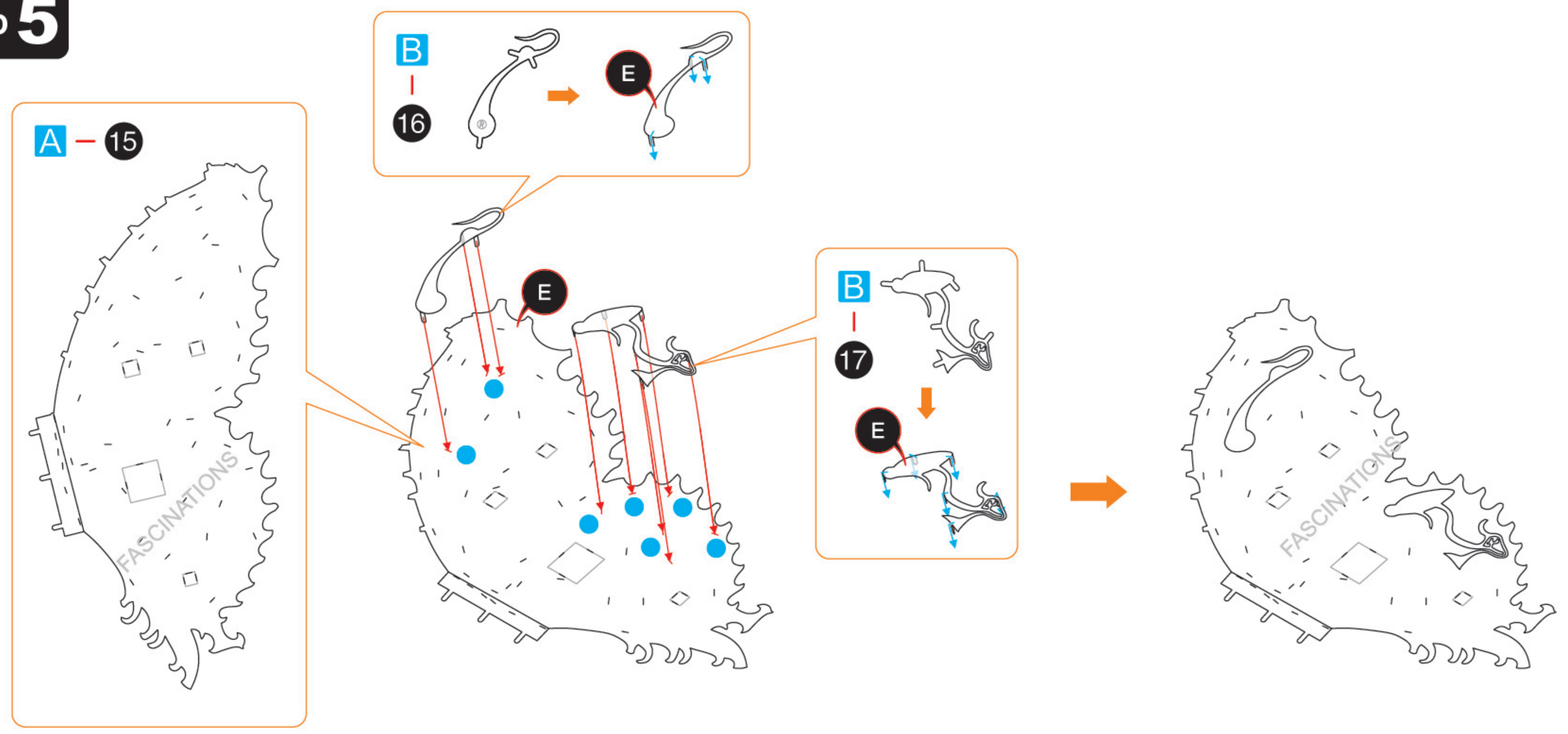


In order to avoid possible injury from sharp edges, please carefully discard the metal sheets after parts have been removed.

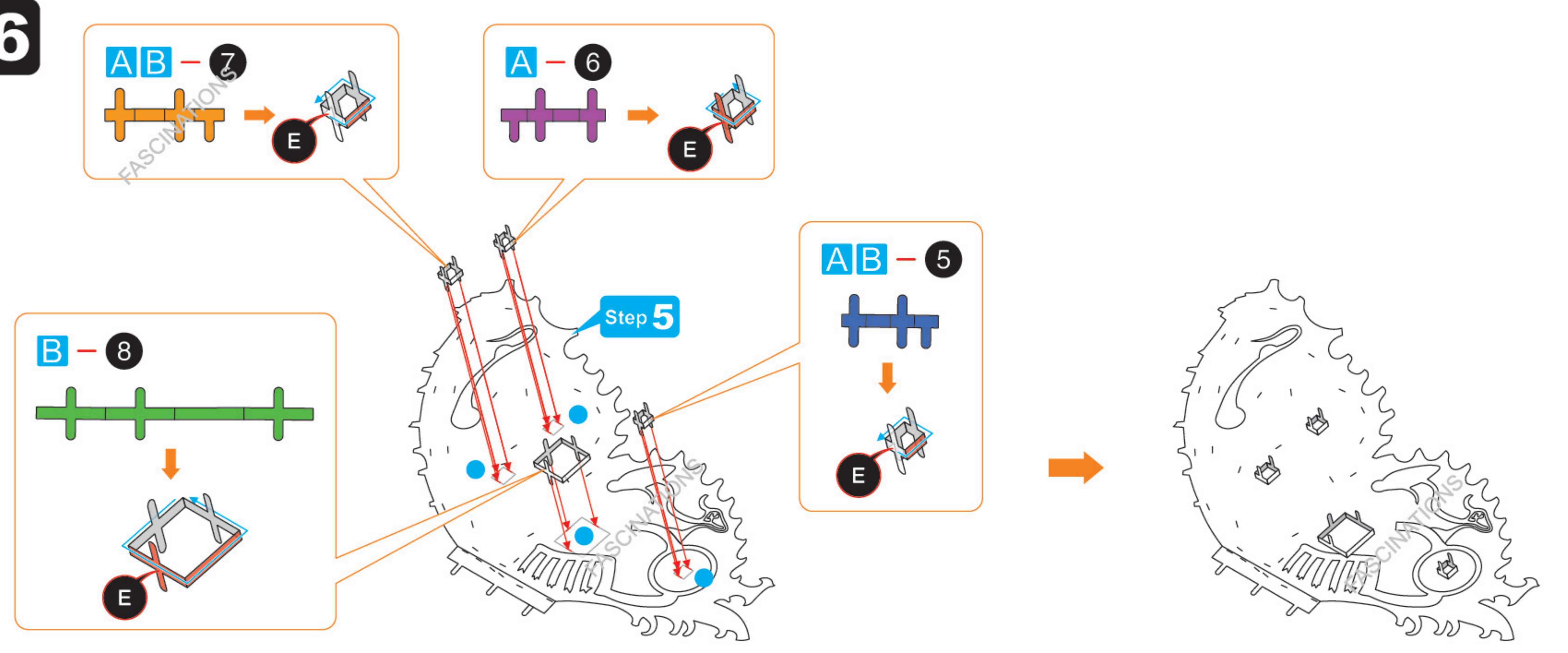
Step 4



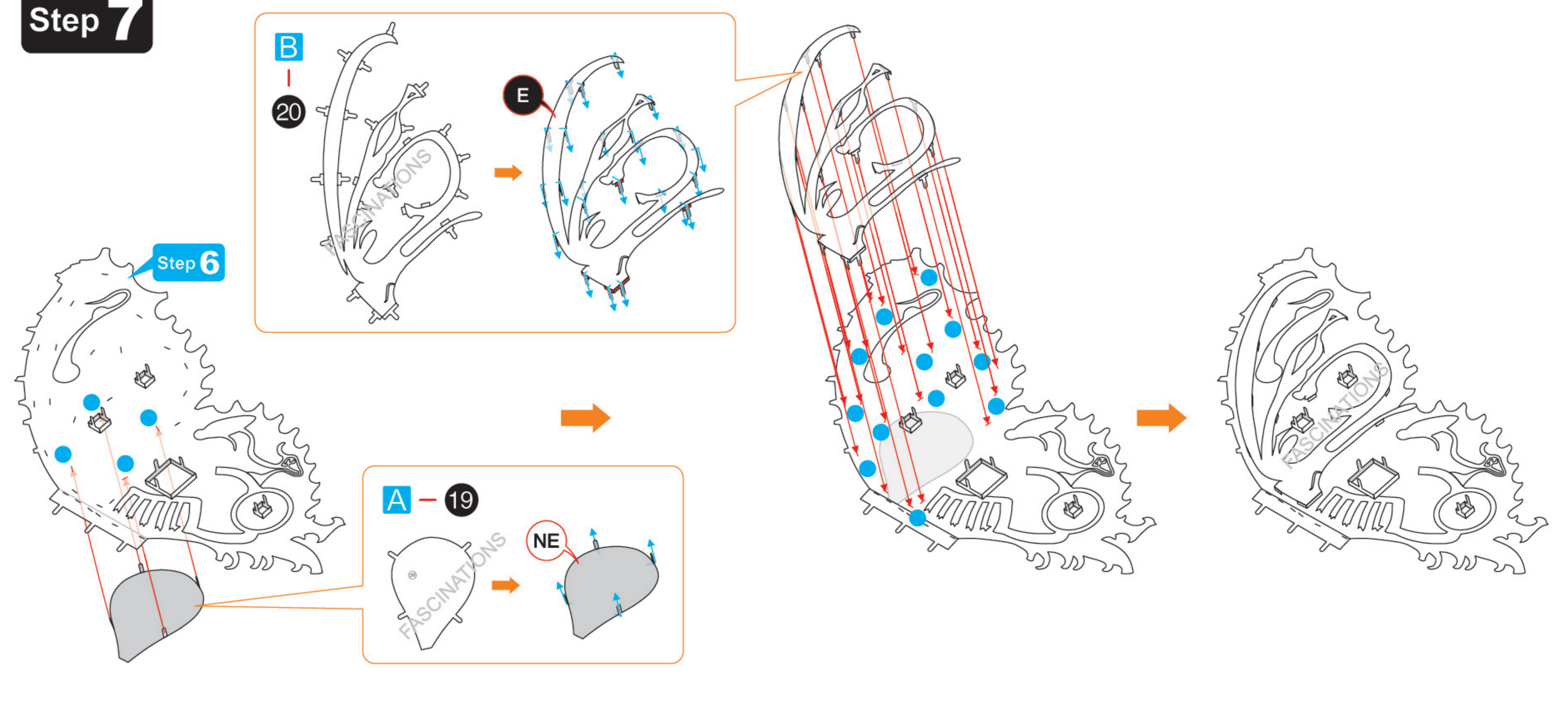
Step 5



Step 6



Step 7



Step 8

