

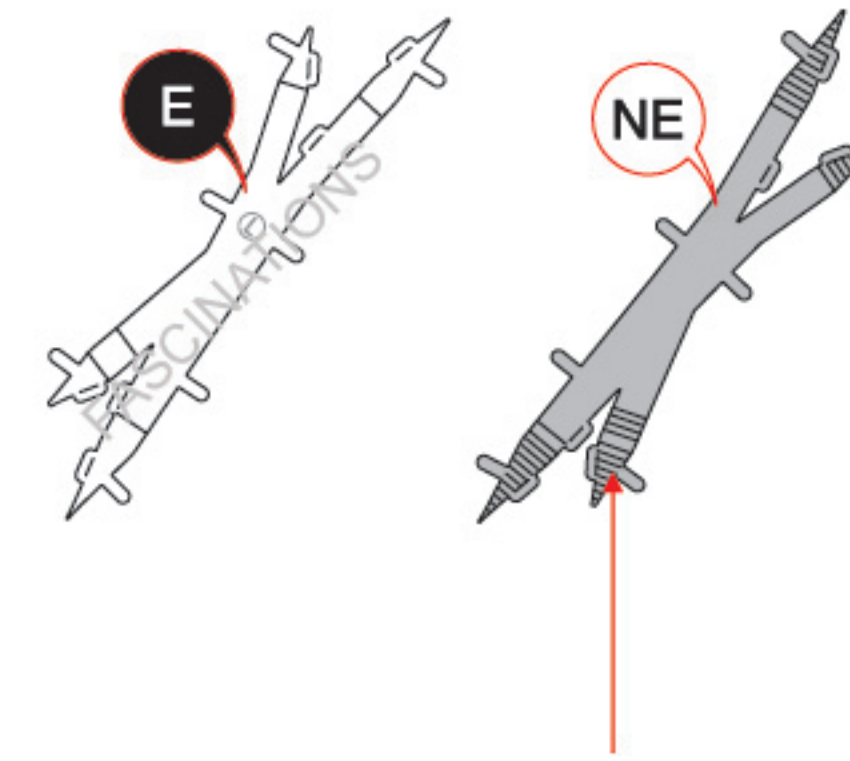
KEEL-BILLED TOUCAN ME1020

It is highly recommended that you visit www.metalearth.com/360/ME1020 to see the completed model before assembling your own

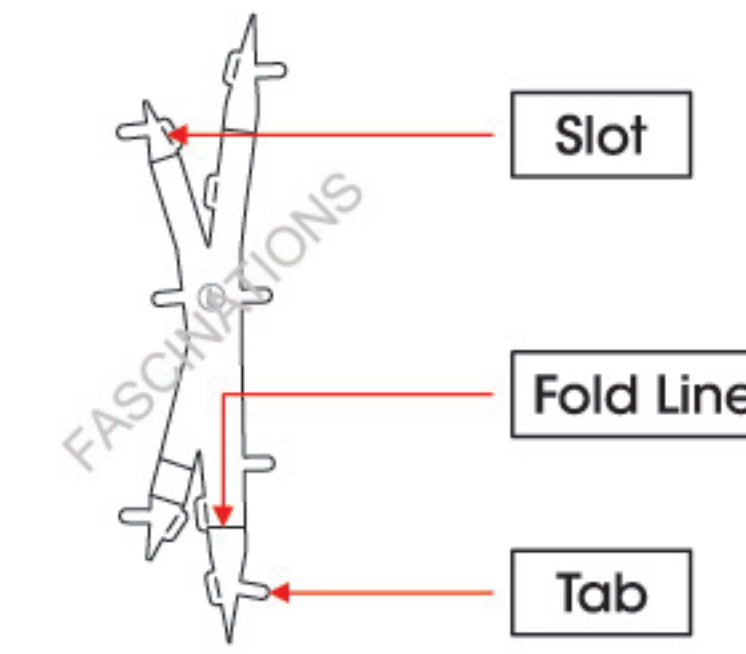


TO CREATE THE BEST CONNECTIONS

B-29



Consider these engraved stripes as supporting features for the bend



Legends:

- E** Engraved/ Color side
- NE** Non - engraved/ Silver side
- Attention point
- Insert tab and bend 90 degrees
- Insert tab and twist 90 degrees

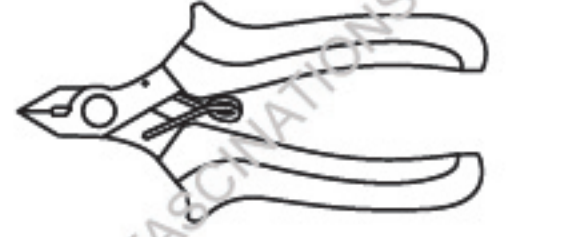
Assembly tip:

If needed, slightly twist tabs to hold parts together then untwist and bend them down for a nice finish.

- Yellow areas should be curled
- Red areas should be folded

Recommended tools:

- Wire cutters: helpful for taking parts from the metal sheets.

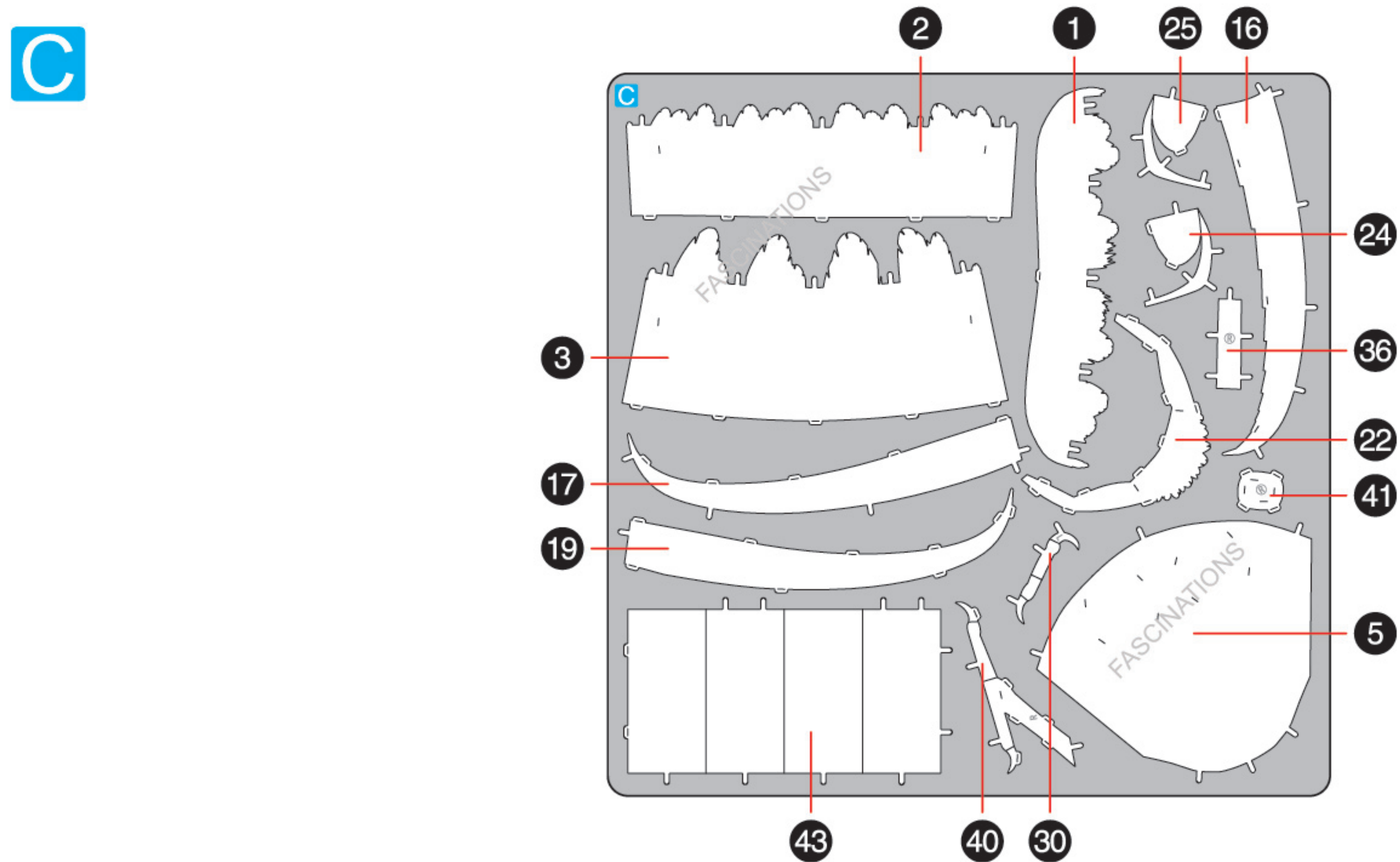
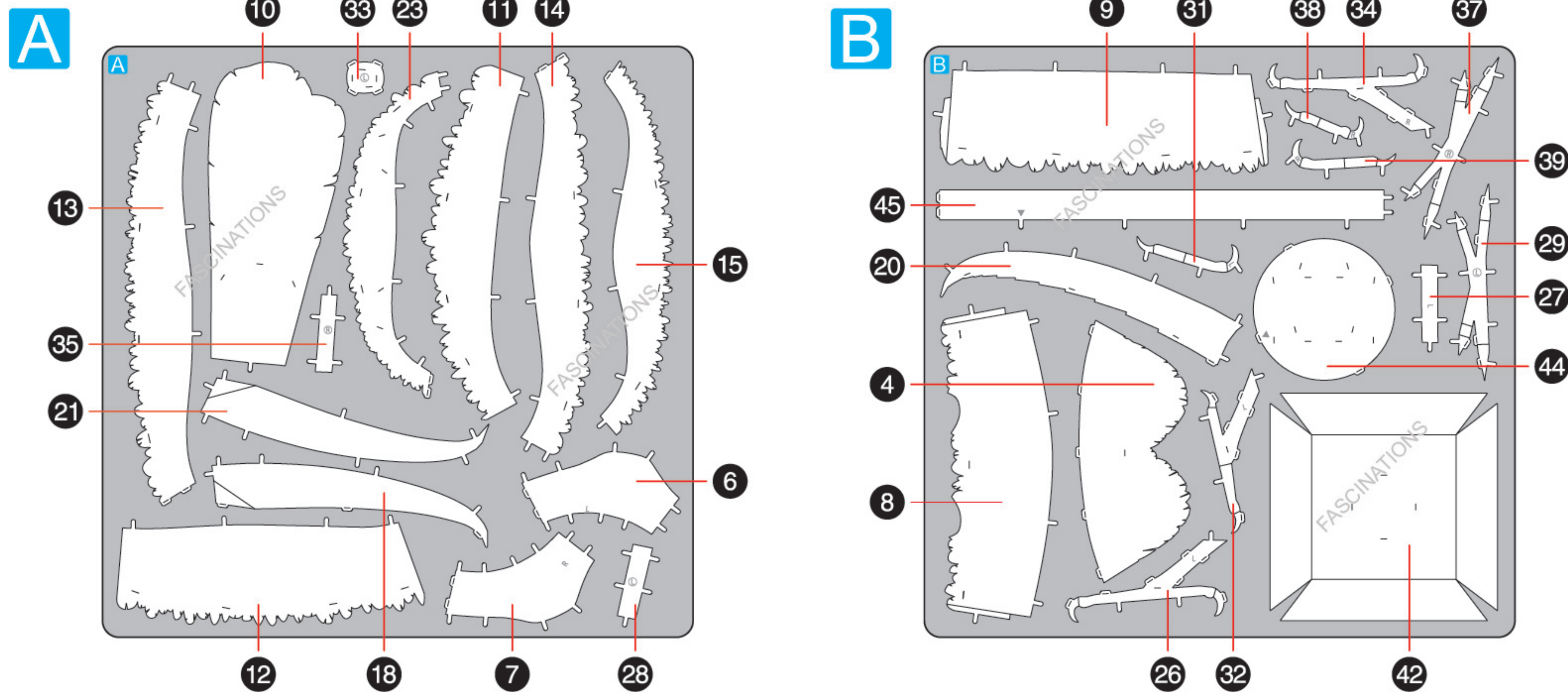


- Tweezers or needle nose pliers: helpful for folding parts, bending and twisting tabs.



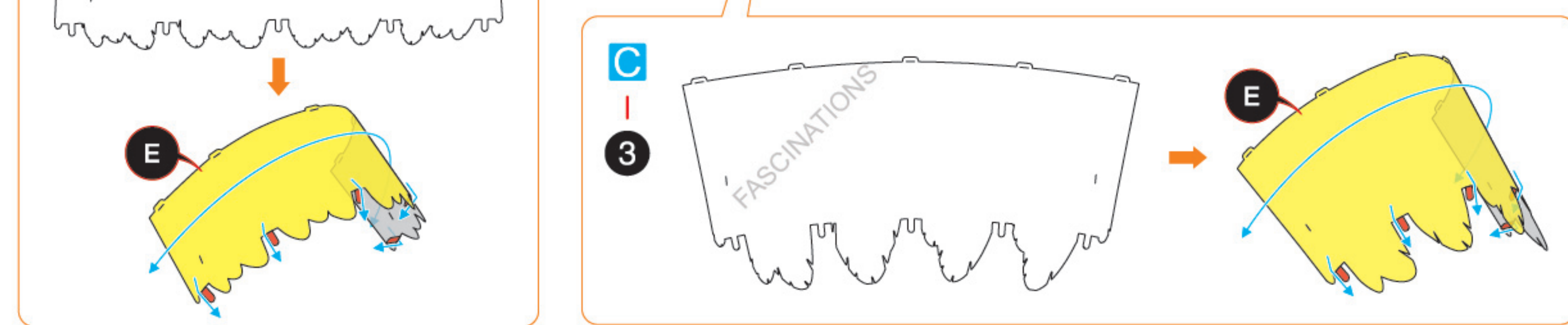
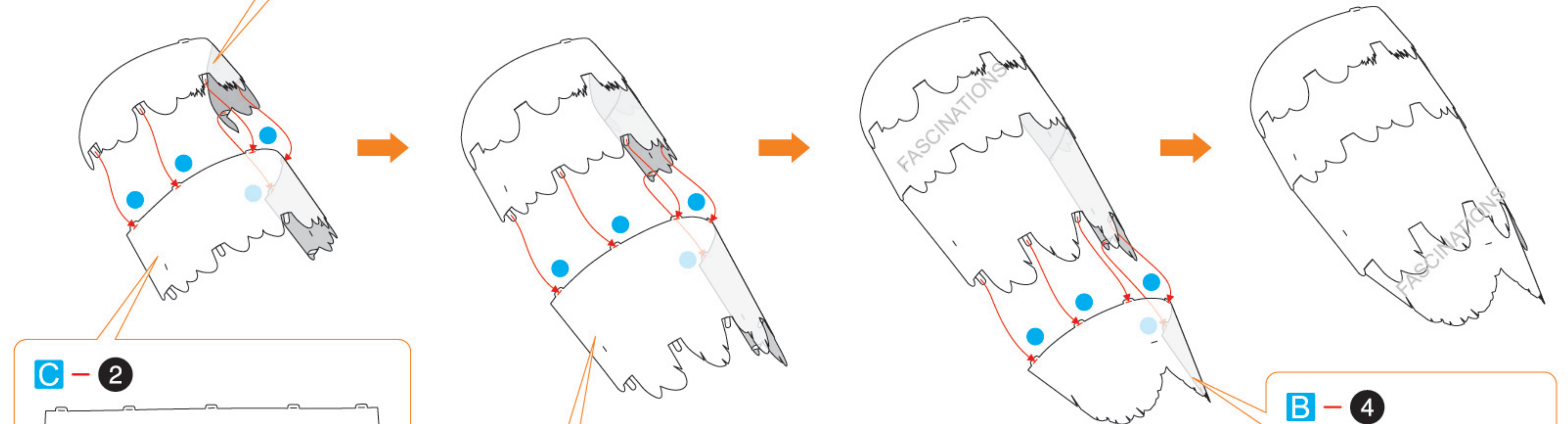
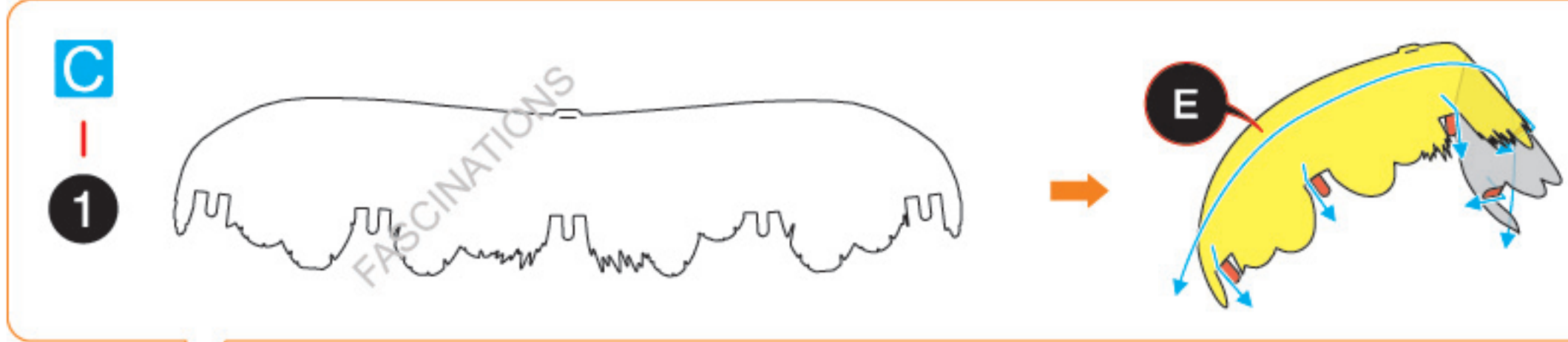
METAL SHEETS

Parts with same color are duplicates

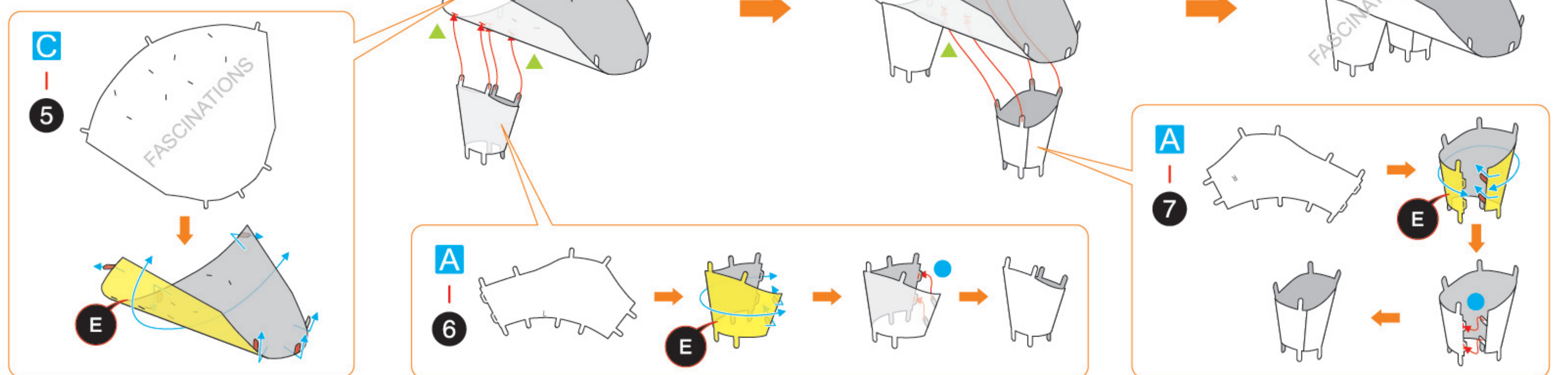


ASSEMBLY FLOW CHART

Step 1



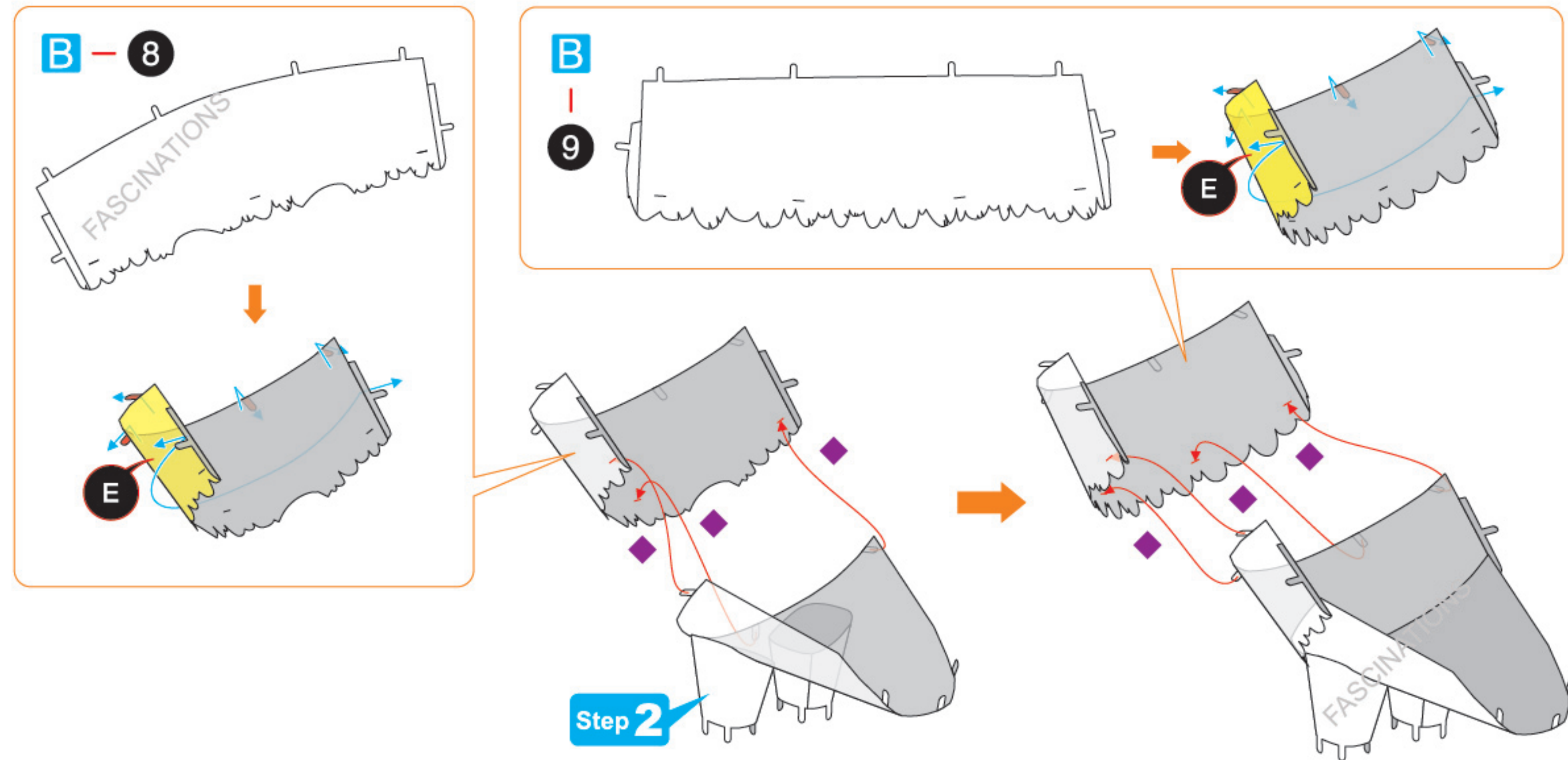
Step 2



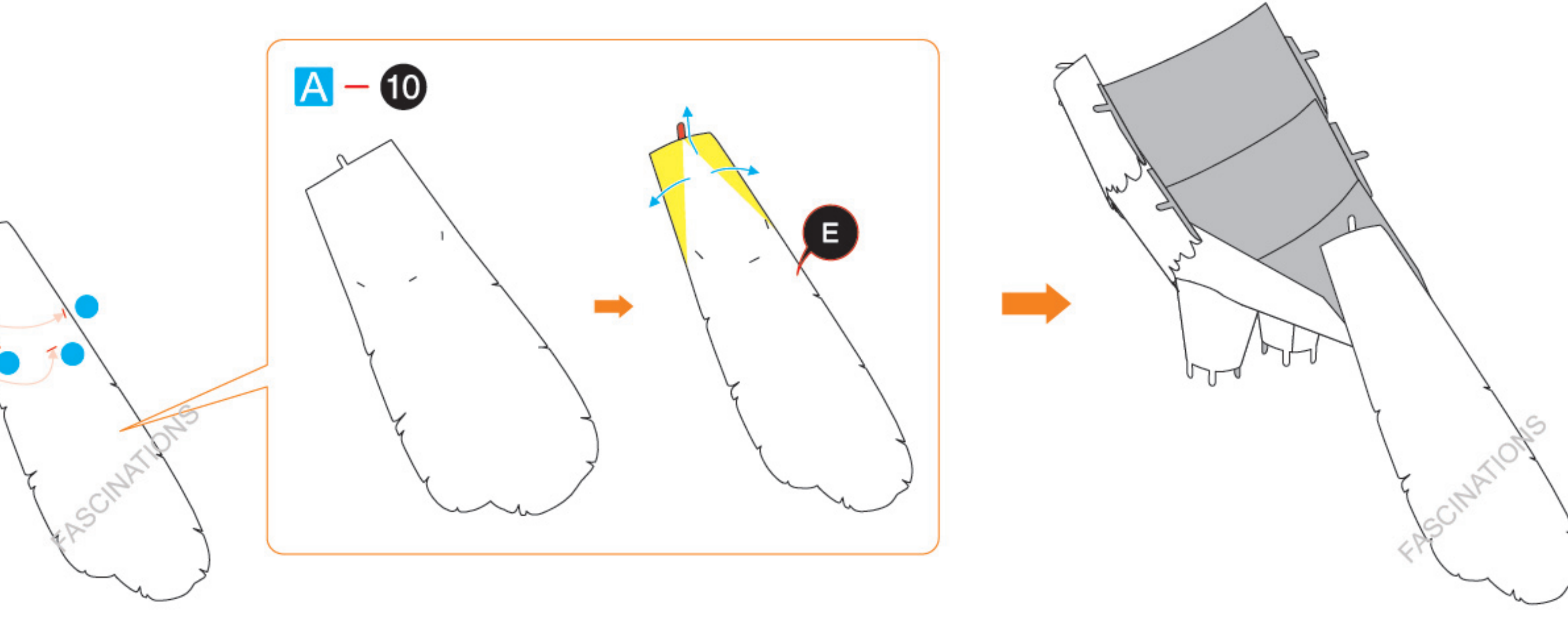
In order to avoid possible injury from sharp edges, please carefully discard the metal sheets after parts have been removed.

Step 3

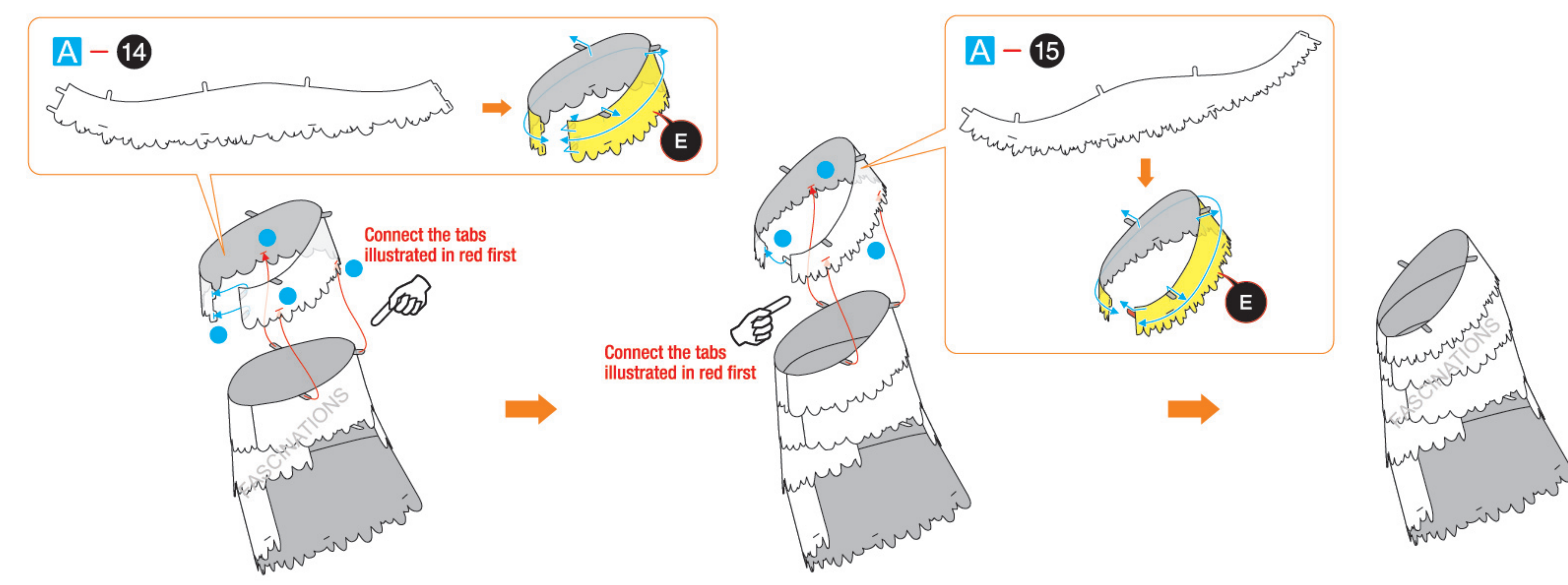
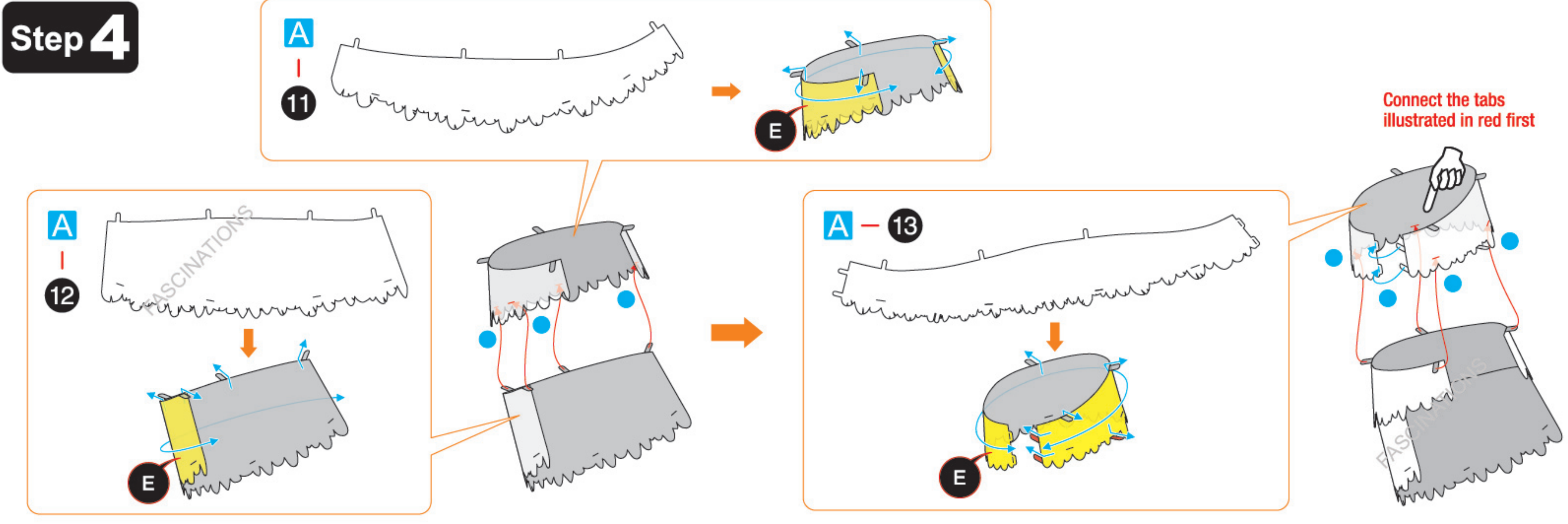
New symbol: Insert tabs and slightly twist them 45° to hold parts together. Finally, bend them up for a nice finish with the colored side revealed.



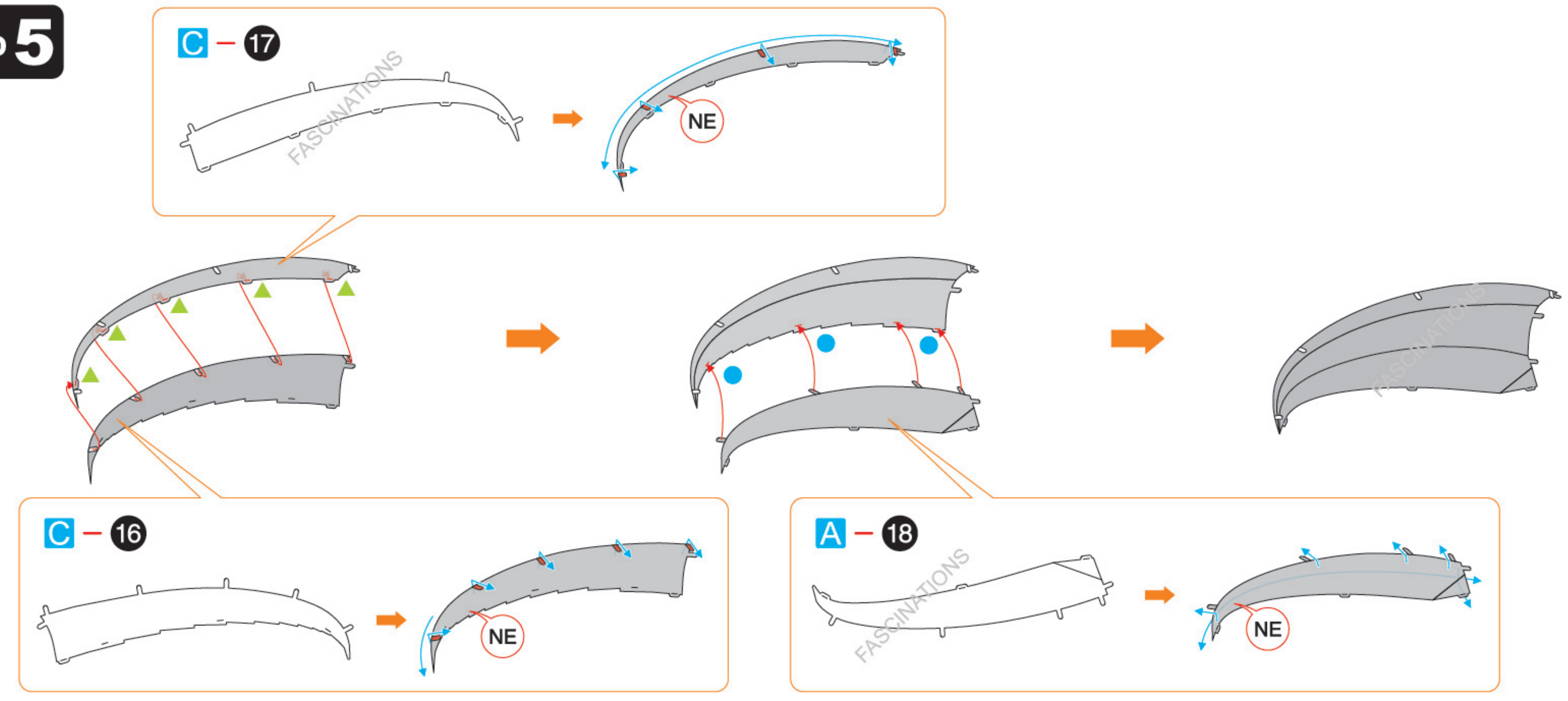
Step 2



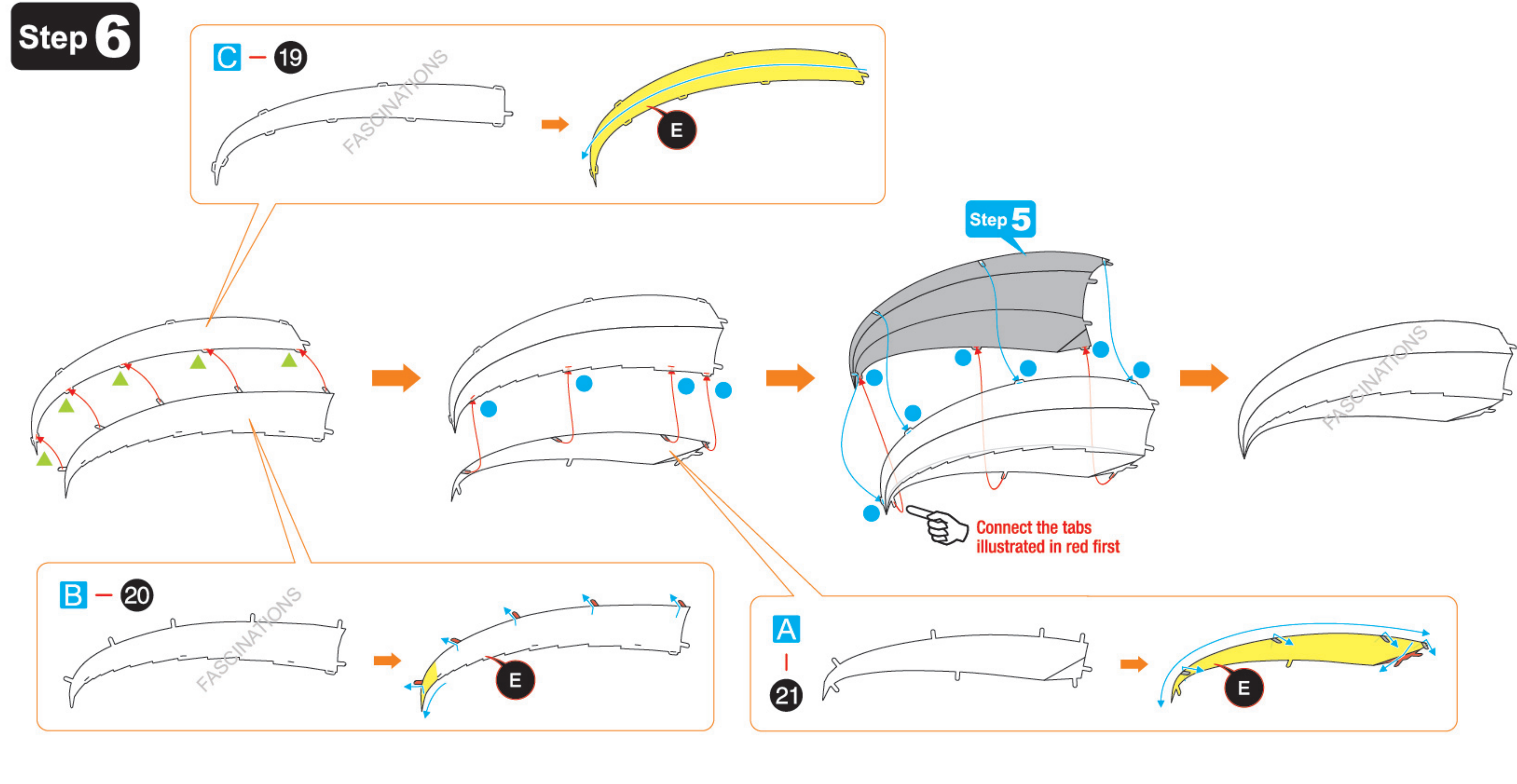
Step 4



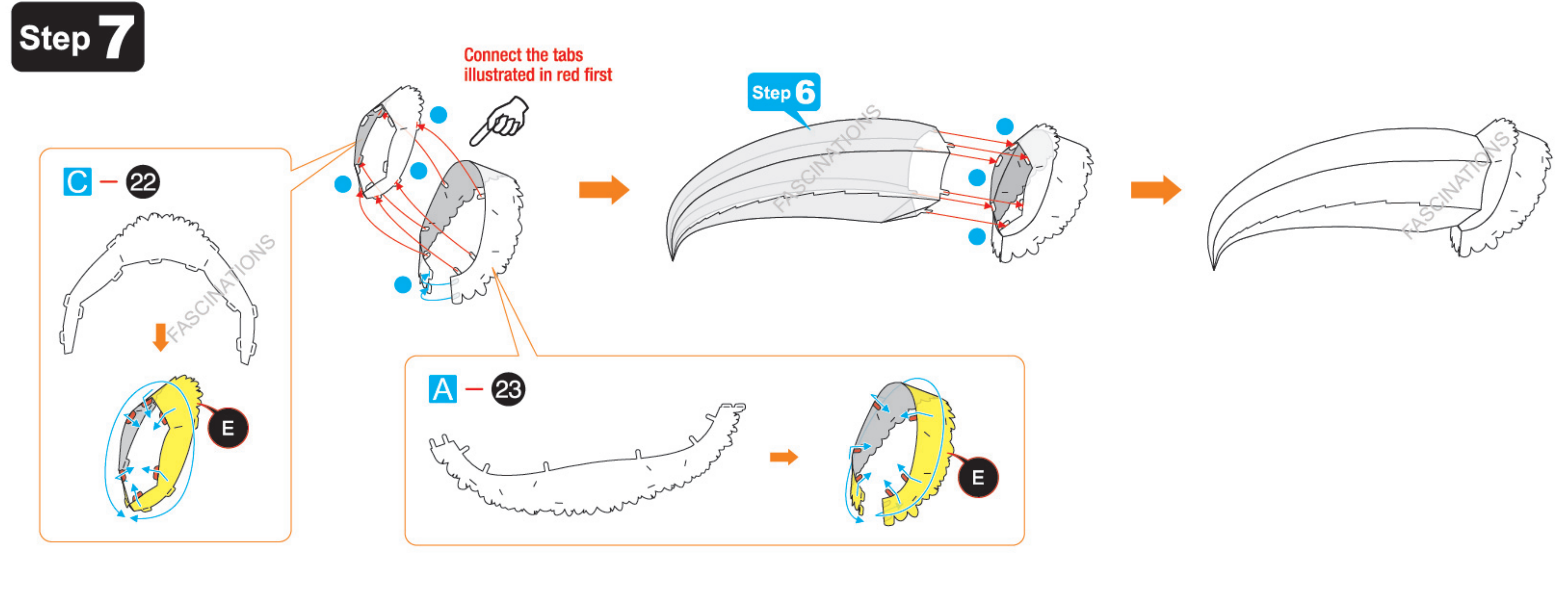
Step 5



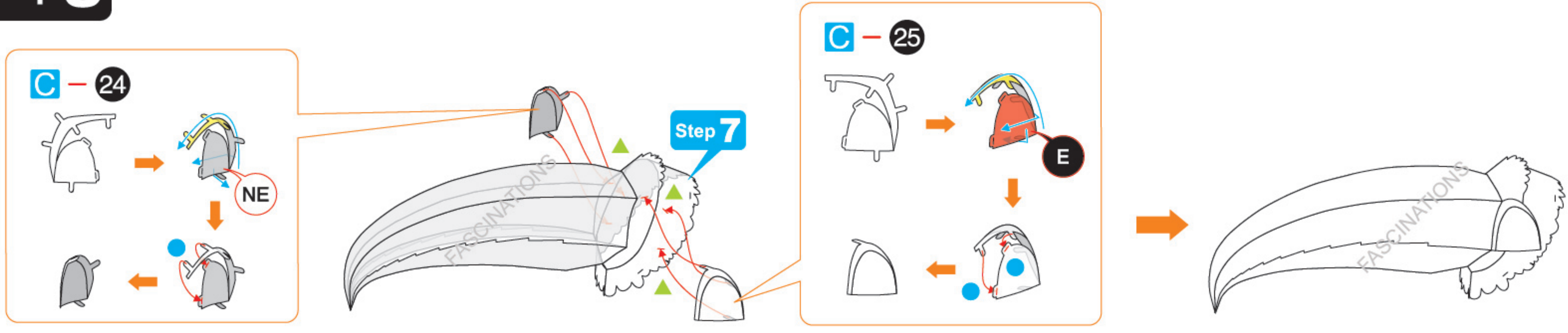
Step 6



Step 7

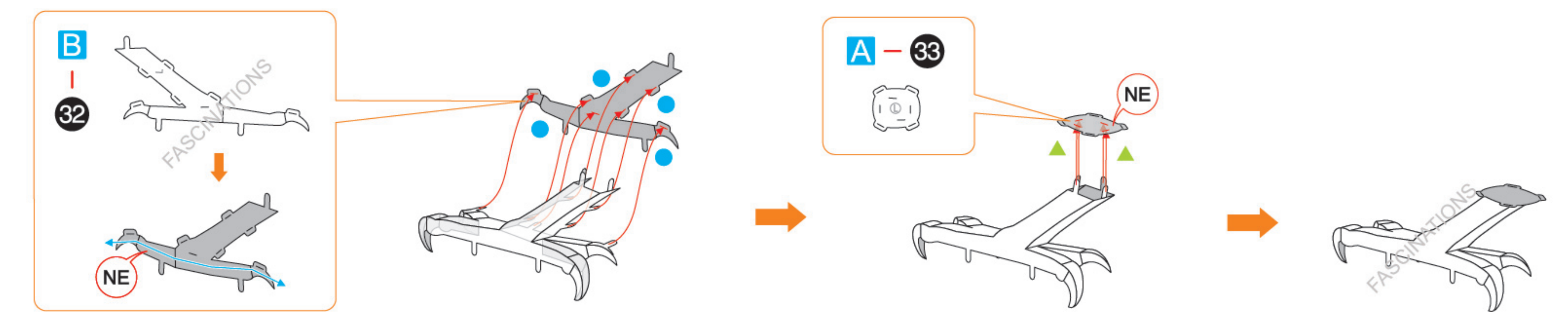
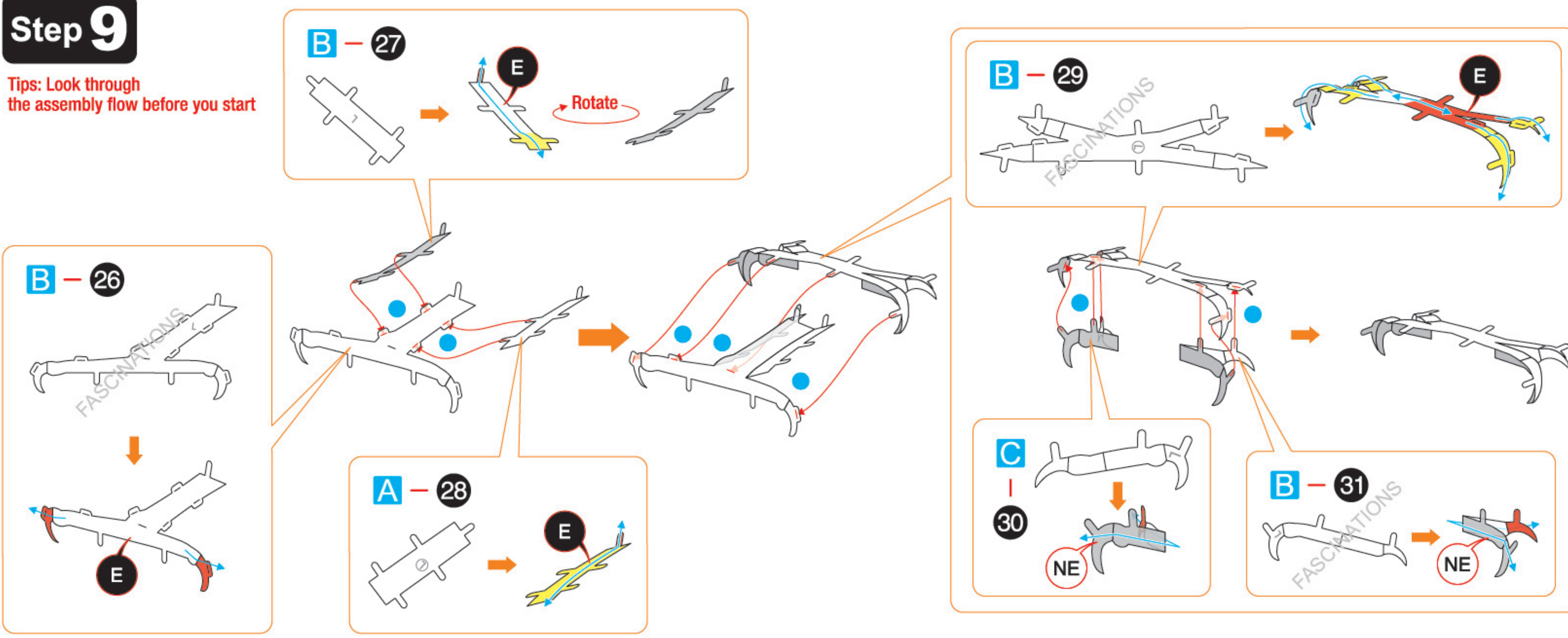


Step 8



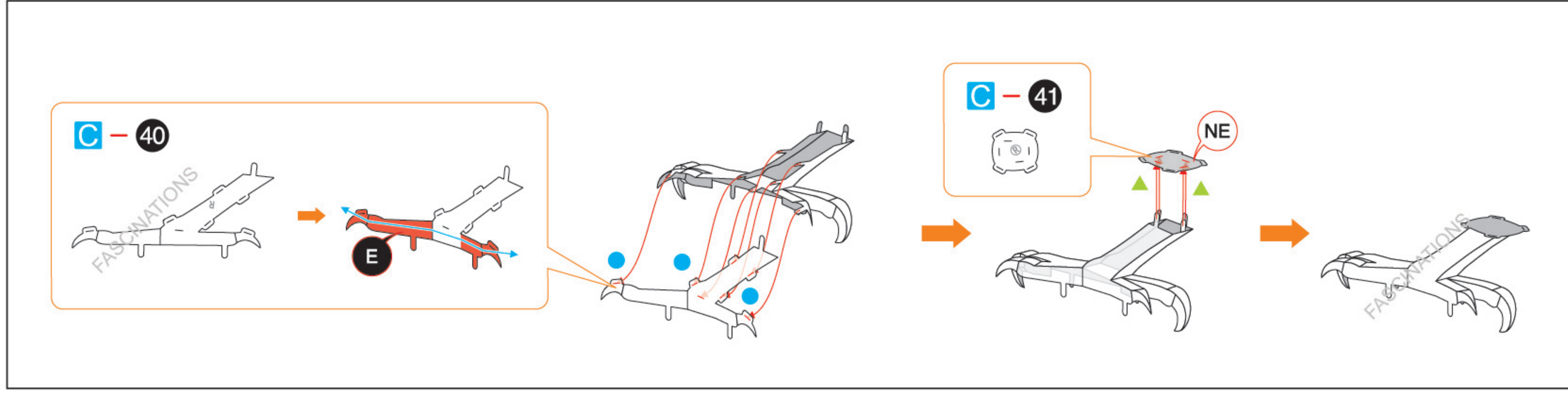
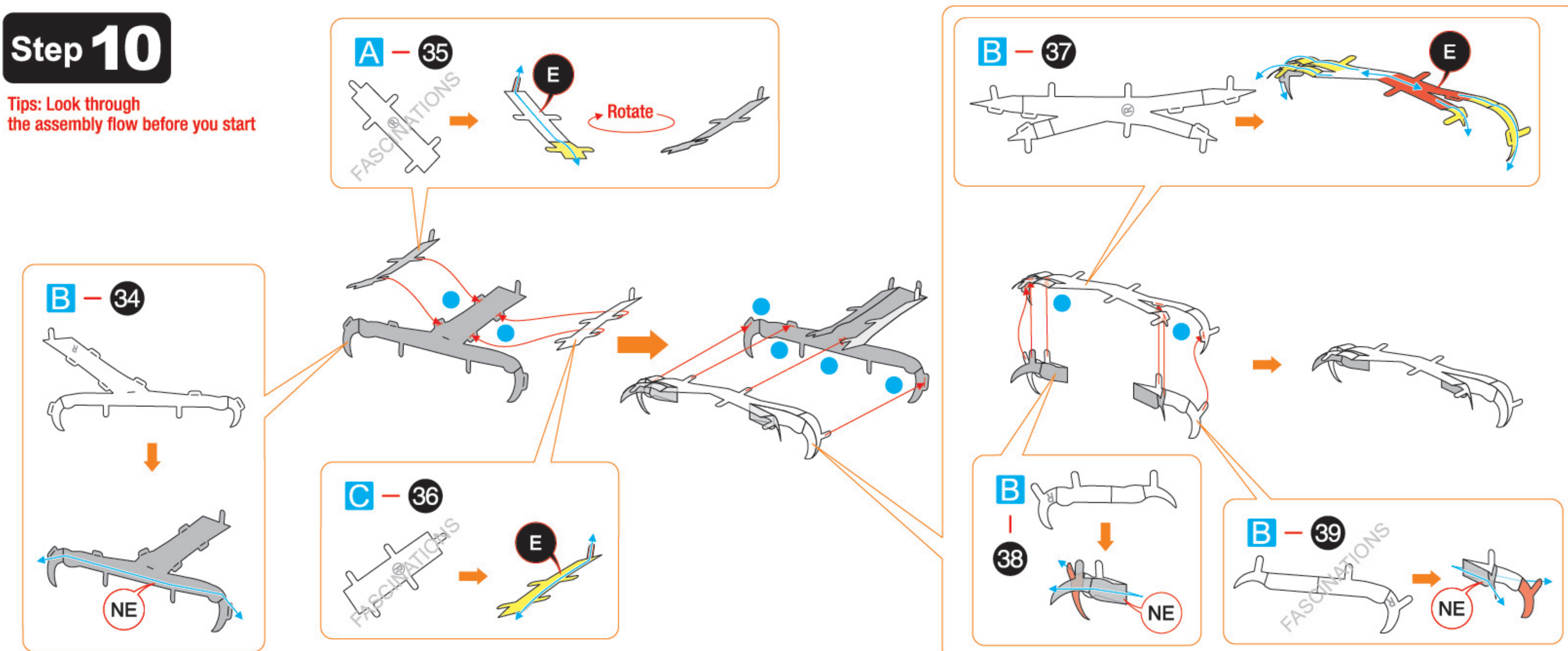
Step 9

Tips: Look through the assembly flow before you start

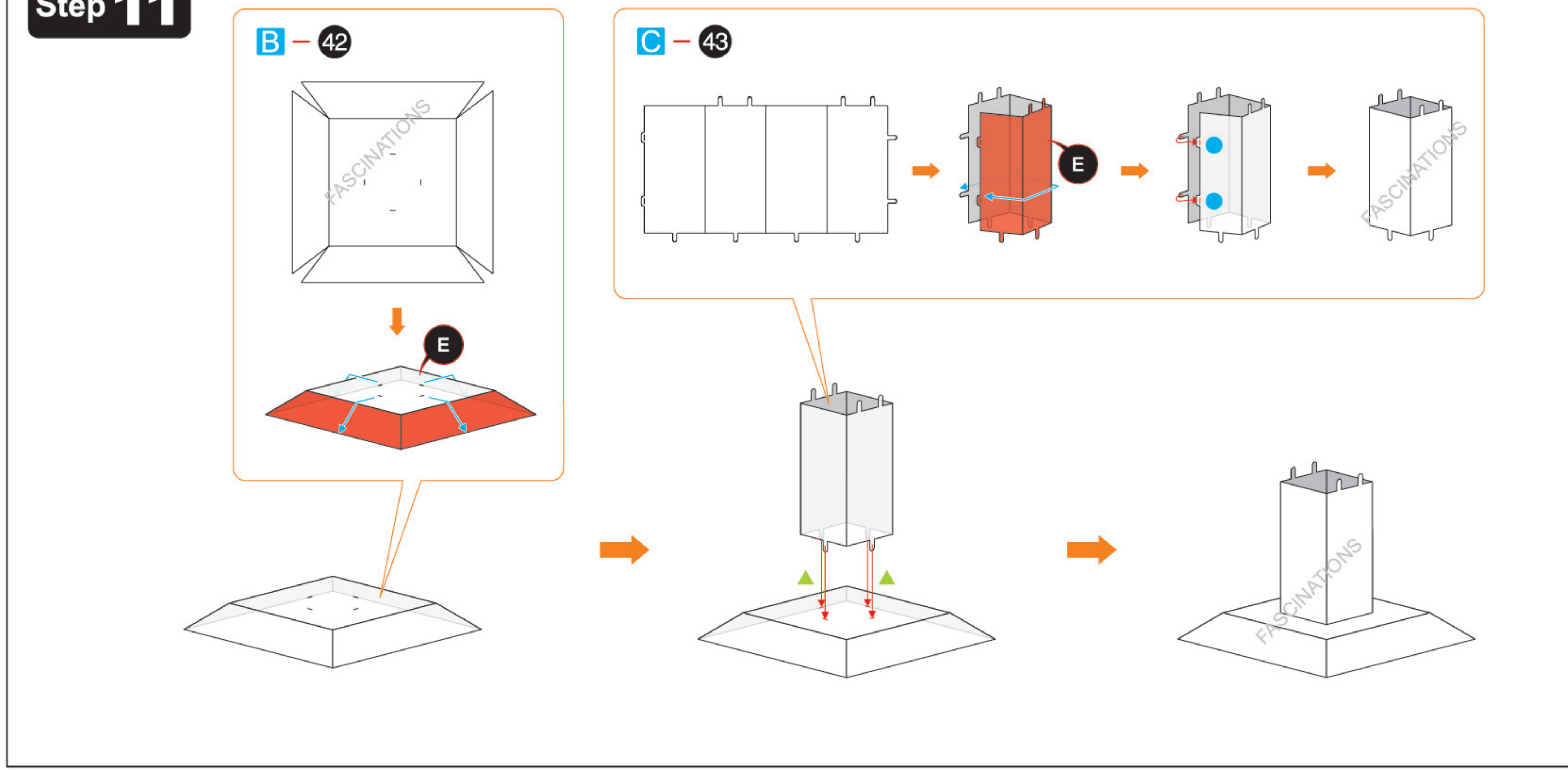


Step 10

Tips: Look through the assembly flow before you start

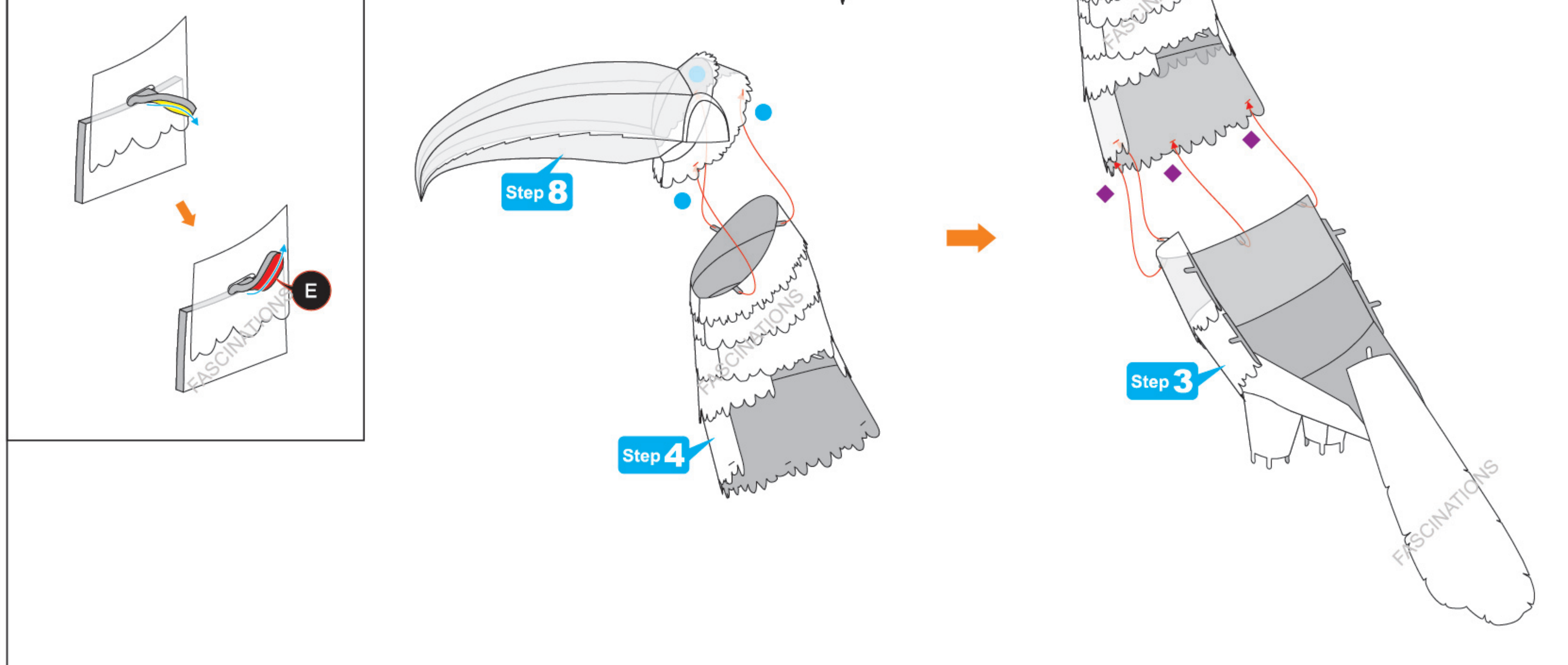


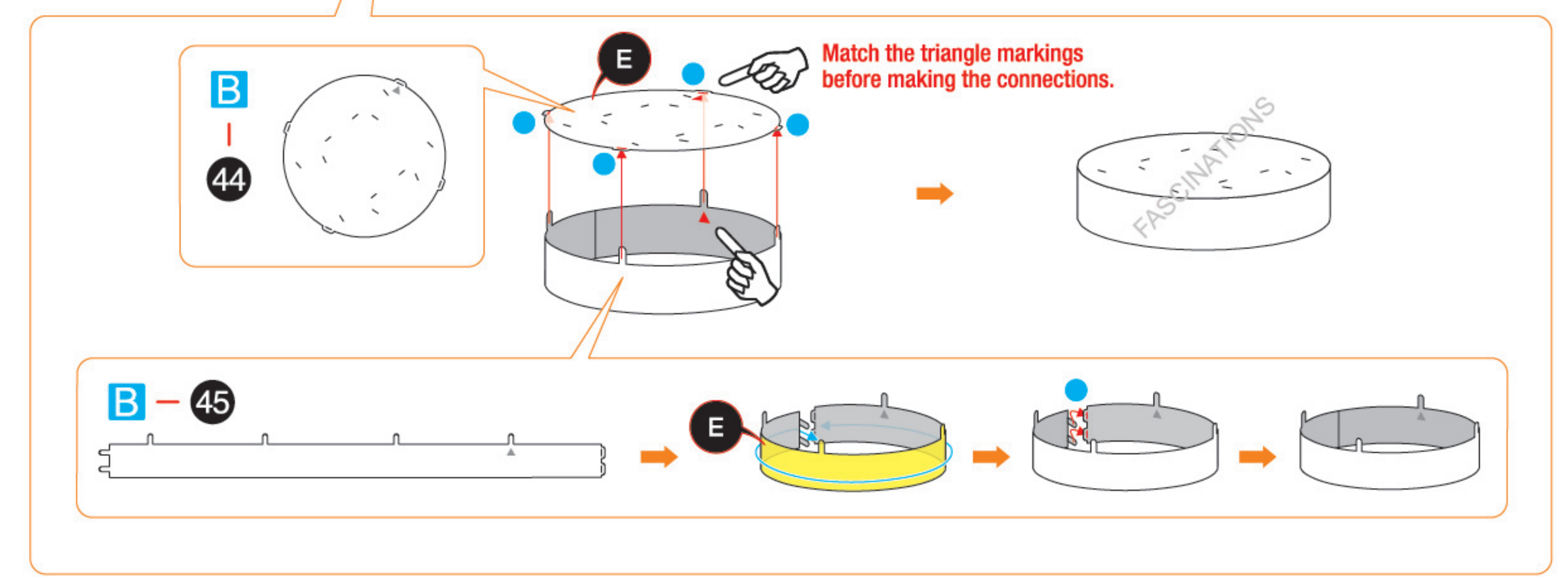
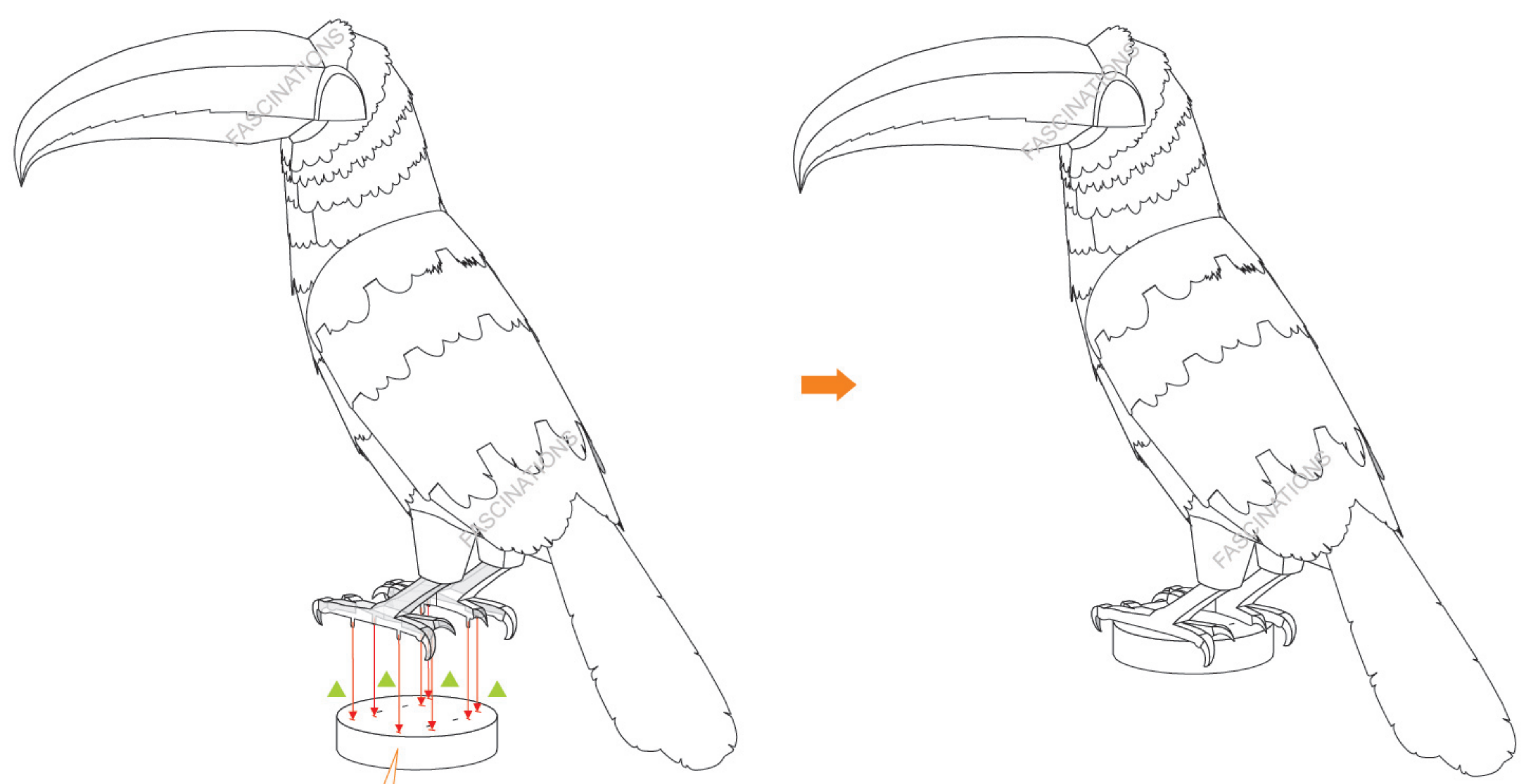
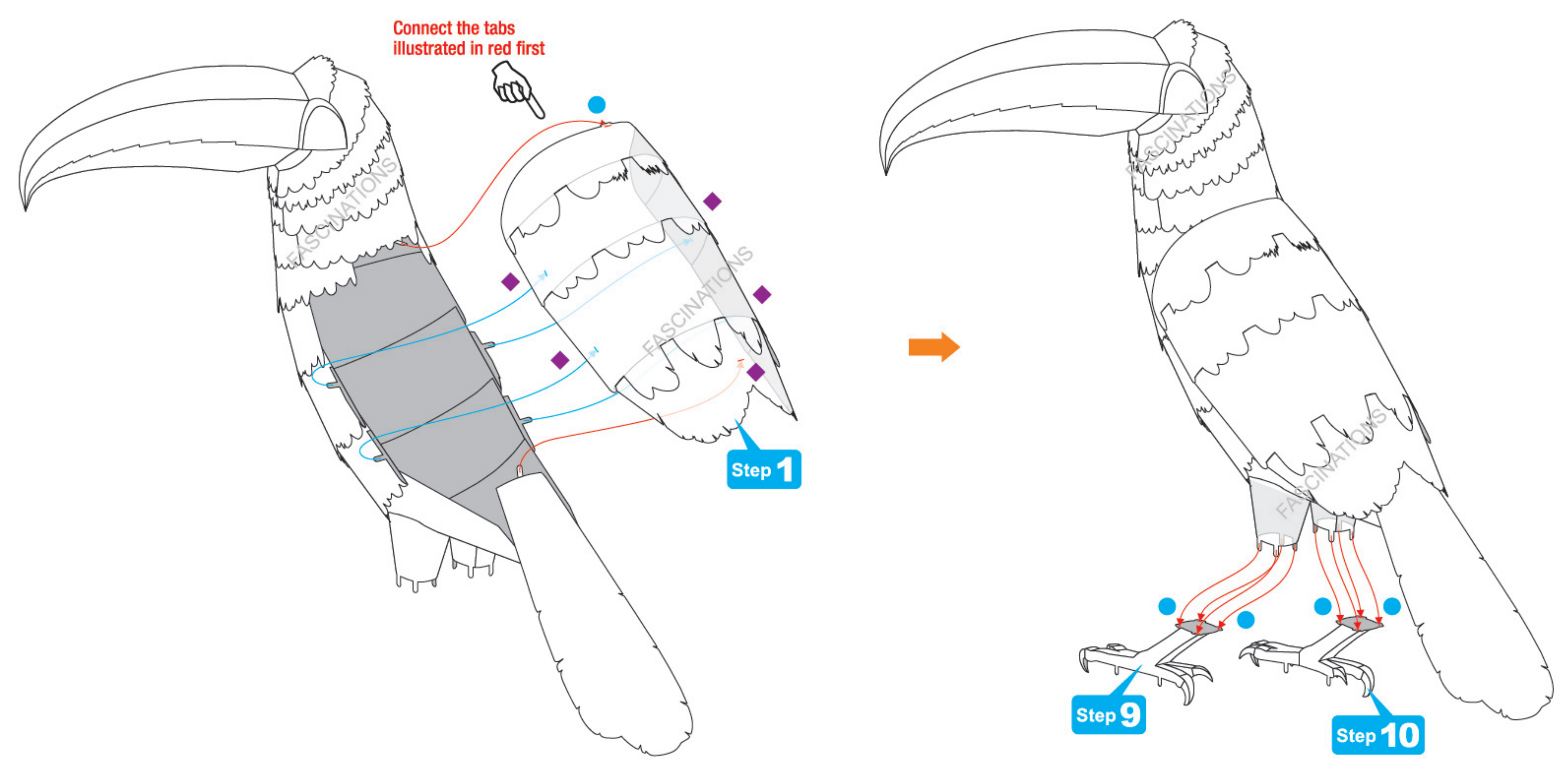
Step 11



Step 12

New symbol: ◆
 Insert tabs and slightly twist them 45° to hold parts together.
 Finally, bend them up for a nice finish with the colored side revealed.





Step 13

