



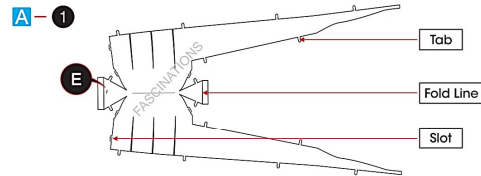
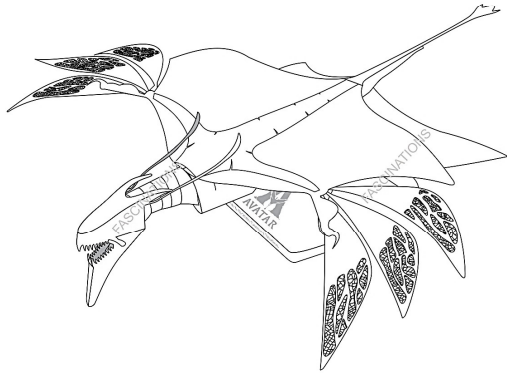
It is highly recommended that you visit www.metalearth.com/360/ICX255 to see the completed model before assembling your own



ICX255

NEYTIRI'S BANSHEE

TO CREATE THE BEST CONNECTIONS



Legends:

E Engraved/ Color side

NE Non - engraved/ Silver side

Attention point

Insert tab and bend 90 degrees

Insert tab and twist 90 degrees

Assembly tip:

If needed, slightly twist tabs to hold parts together then untwist and bend them down for a nice finish.

Yellow areas should be curled

Red areas should be folded



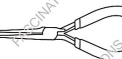
In order to avoid possible injury from sharp edges, please carefully discard the metal sheets after parts have been removed.

Recommended tools:

- Wire cutters: helpful for taking parts from the metal sheets.

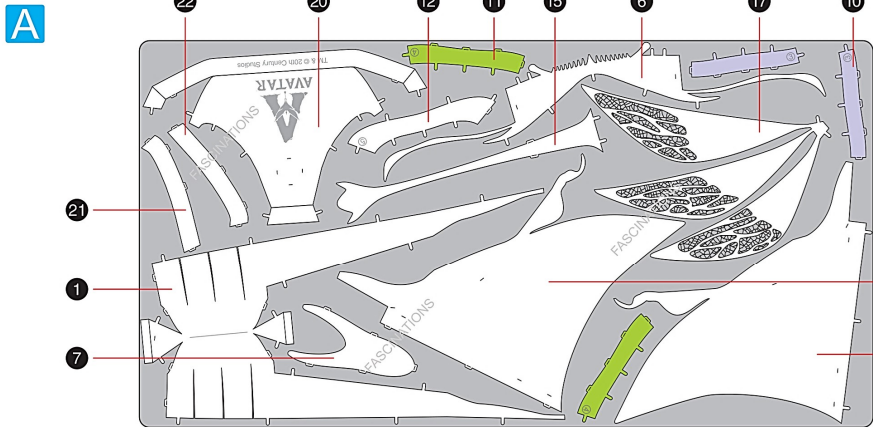


- Tweezers or needle nose pliers: helpful for folding parts, bending and twisting tabs.

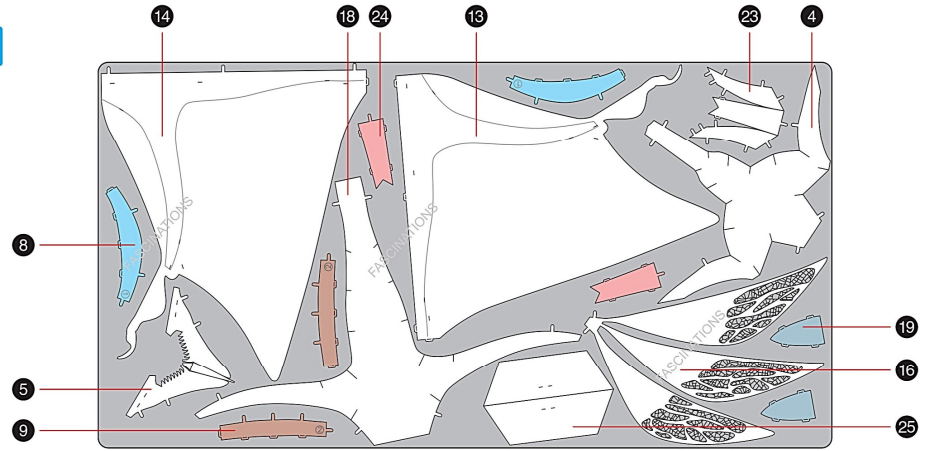


METAL SHEETS

Parts with same color are duplicates

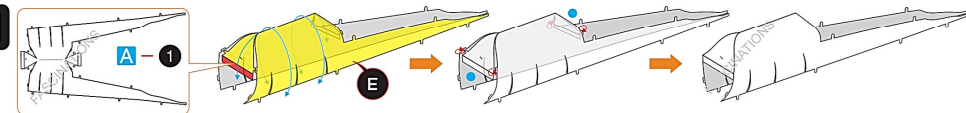


B

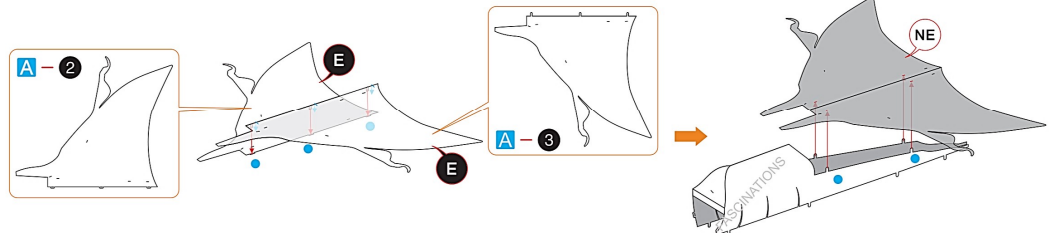


ASSEMBLY STEPS

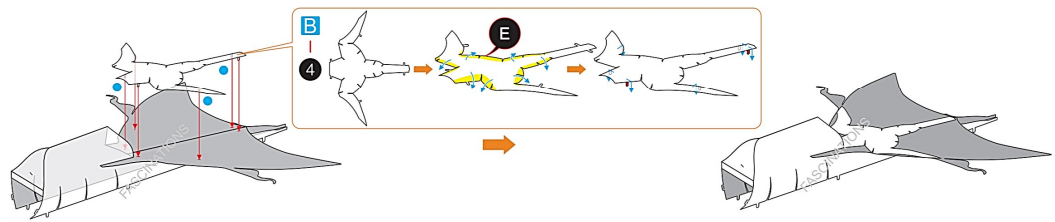
Step 1



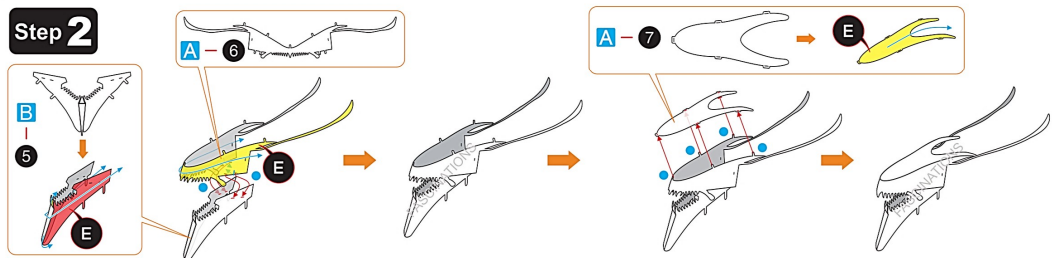
A-2



B-4



Step 2



Step 3

Diagram illustrating Step 3 of the assembly process. It shows a sequence of parts being attached to a central cylindrical component. The parts are labeled with callouts: B-8, E, B-9, E, A-10, E, A-11, E, A-12, E, and a 'Rotate' instruction with a circular arrow. The parts are being added to the cylinder in a specific order, as indicated by the arrows.

Step 4

Diagram illustrating Step 4 of the assembly process. It shows the attachment of various wing and tail pieces to the main body. The parts are labeled with callouts: E, A-15, E, B-13, B-14, E, A-16, E, A-17, E, B-18, E, and B-19. A red arrow points to a specific tab with the text "Connect the tabs illustrated in red first". The diagrams show the pieces being attached to the main body and then to each other to form the complete wing and tail structure.

Diagram illustrating Step 2 of the assembly process. It shows the attachment of a head piece to the main body. The parts are labeled with callouts: Step 2, E, and B-19. The head piece is being attached to the front of the main body, as indicated by the arrows.

Step 5

Diagram illustrating Step 5 of the assembly process. It shows the attachment of a tail fin piece to the main body. The parts are labeled with callouts: A-20, E, A-21, E, A-22, E, B-23, E, NE, B-24, E, B-25, E, and Step 4. A red arrow points to a specific tab with the text "Connect the tabs illustrated in red first". The diagrams show the tail fin piece being attached to the back of the main body and then to each other to form the complete tail structure.