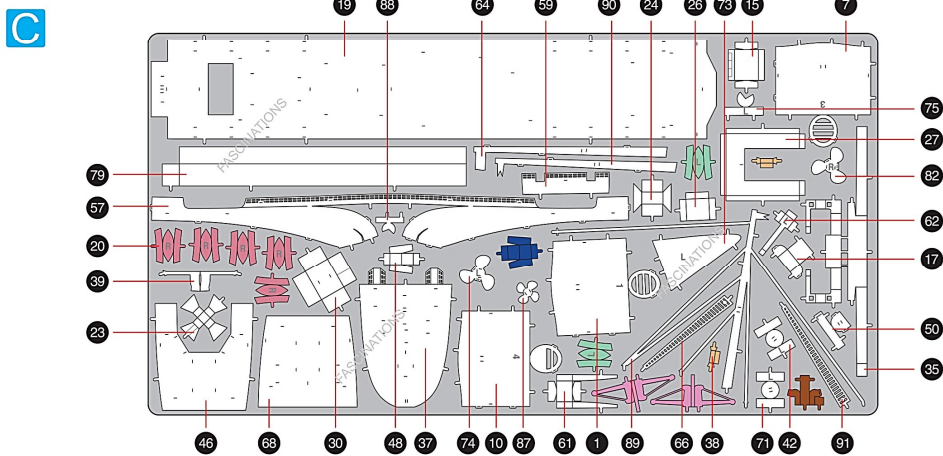
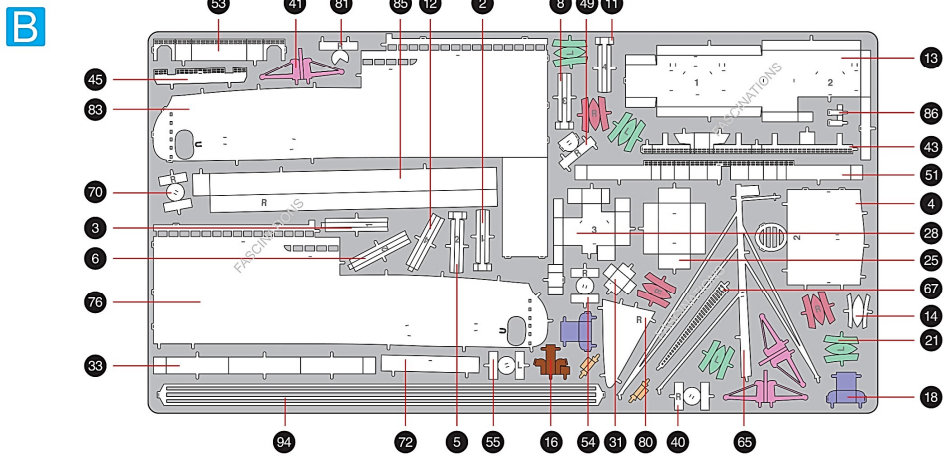
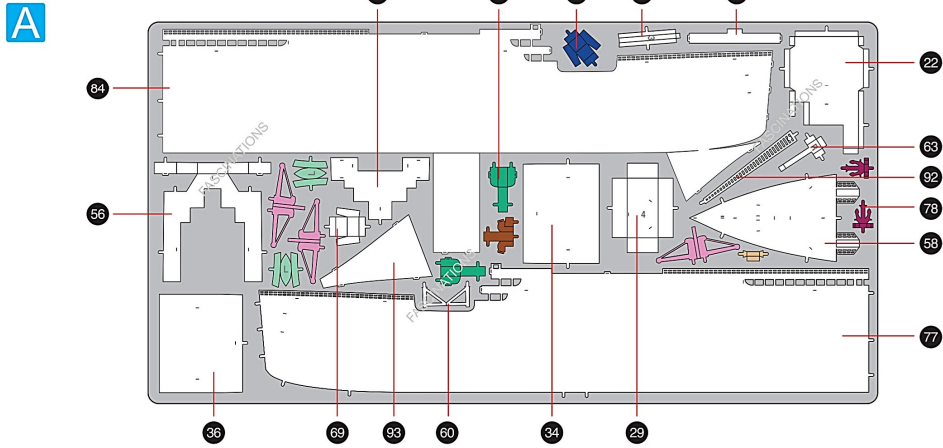


METAL SHEETS

Parts with same color are duplicates



Metal Earth

360° view

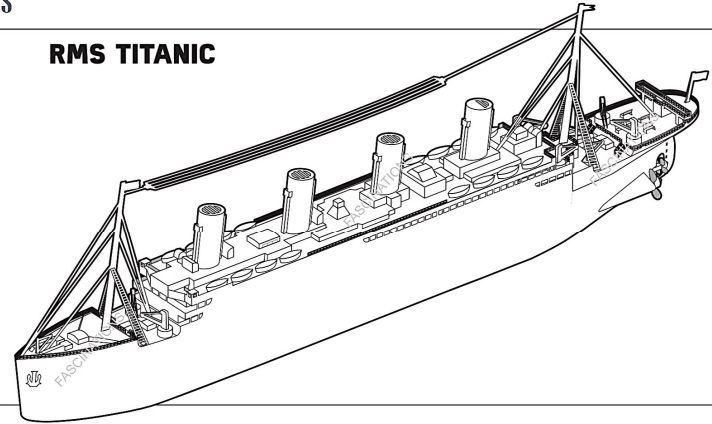


It is highly recommended that you visit www.metalearth.com/360/PS2004 to see the completed model before assembling your own

Premium Series

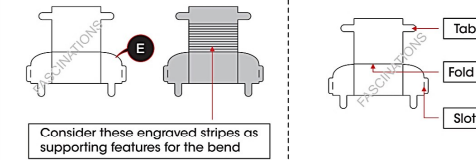
PS2004

RMS TITANIC



TO CREATE THE BEST CONNECTIONS

B - 18



! In order to avoid possible injury from sharp edges, please carefully discard the metal sheets after parts have been removed.

Legends:

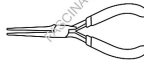
- E** Engraved/ Color side
- NE** Non - engraved/ Silver side
- Attention point
- Insert tab and bend 90 degrees
- Insert tab and twist 90 degrees

Recommended tools:

- Wire cutters: helpful for taking parts from the metal sheets.



- Tweezers or needle nose pliers: helpful for folding parts, bending and twisting tabs.

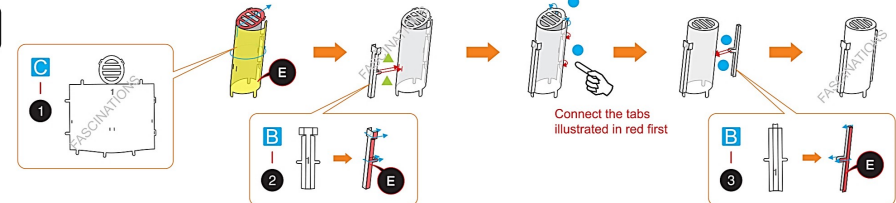


Assembly tip:

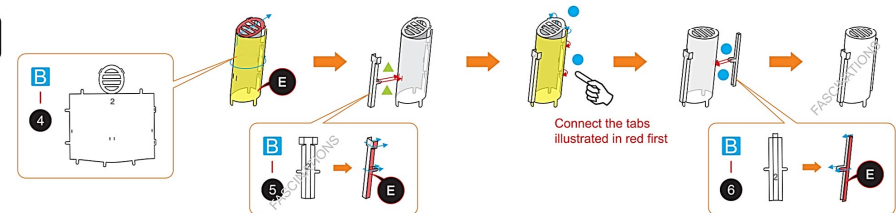
If needed, slightly twist tabs to hold parts together then untwist and bend them down for a nice finish.

ASSEMBLY STEPS

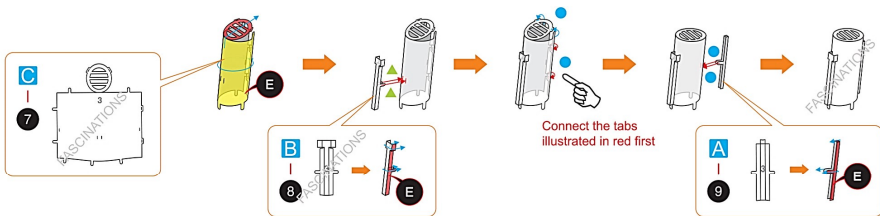
Step 1



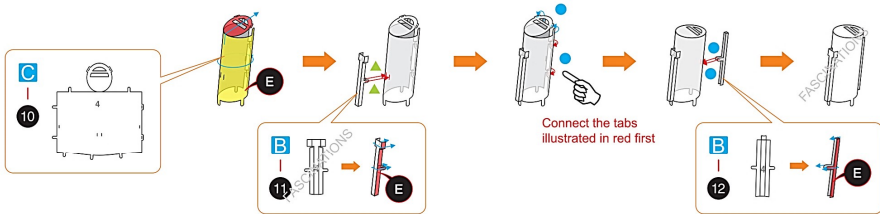
Step 2



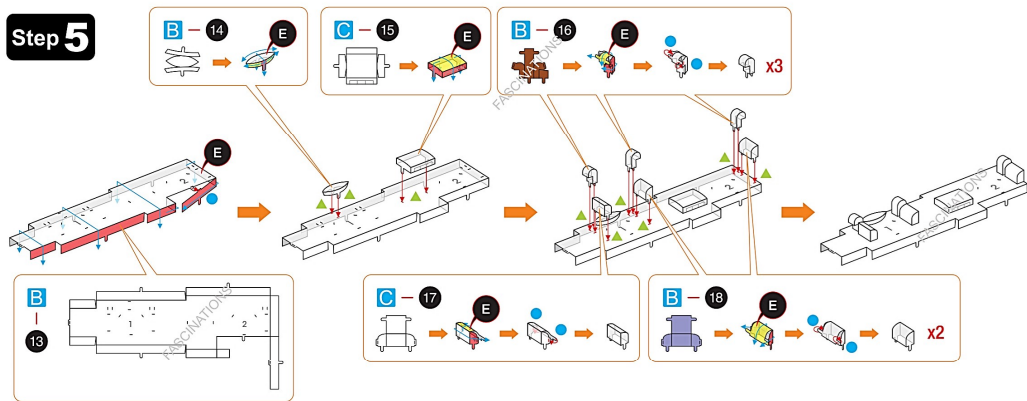
Step 3



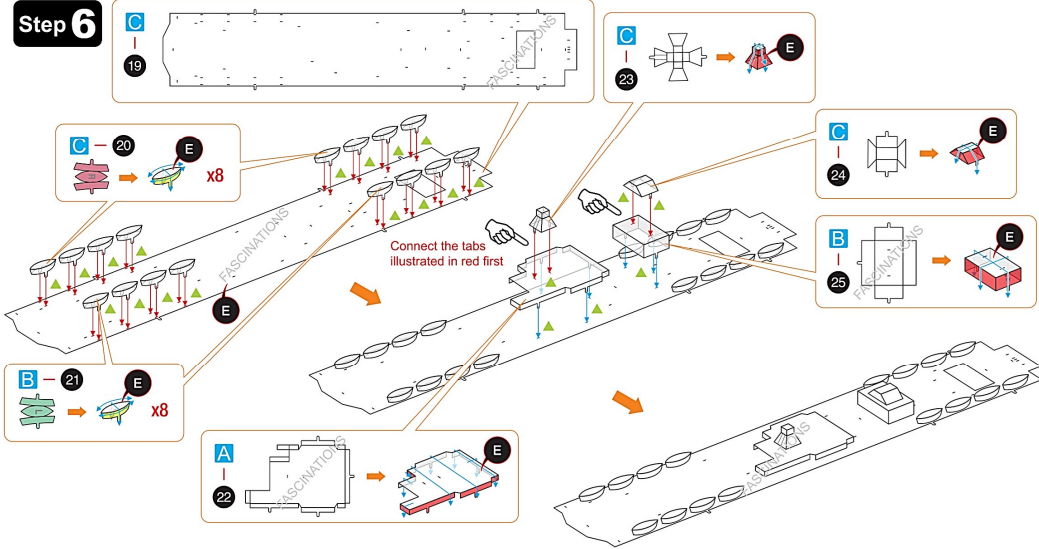
Step 4



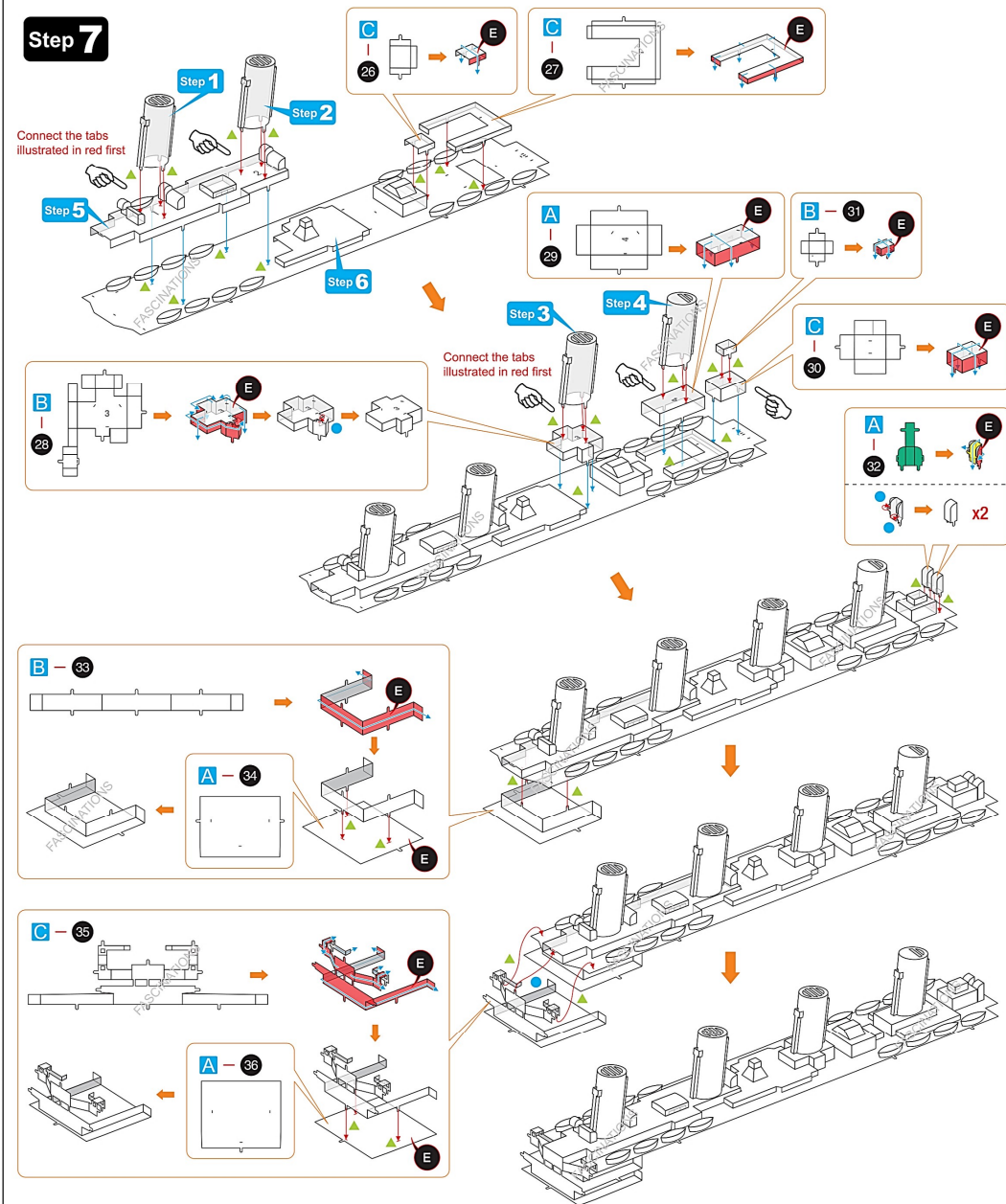
Step 5



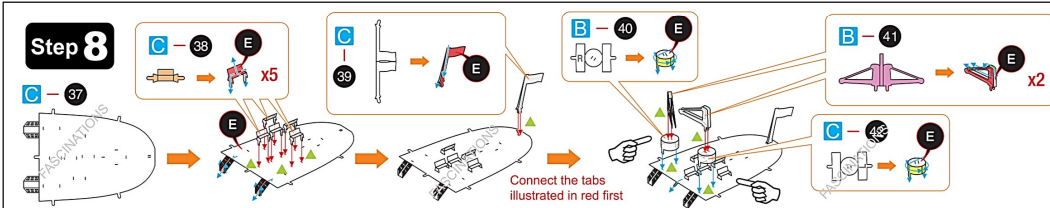
Step 6

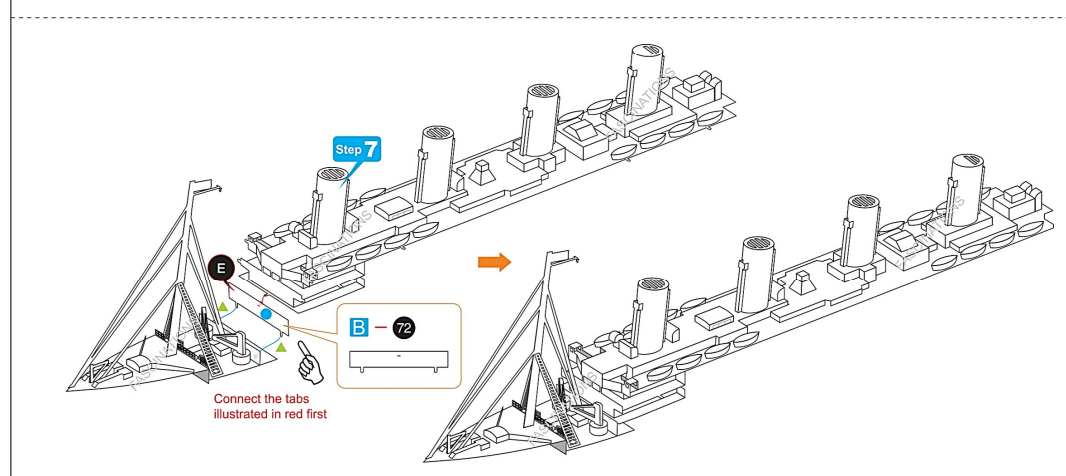
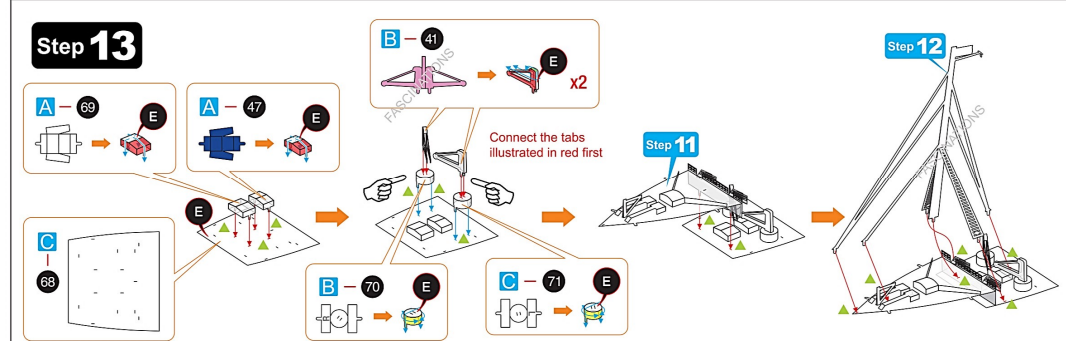
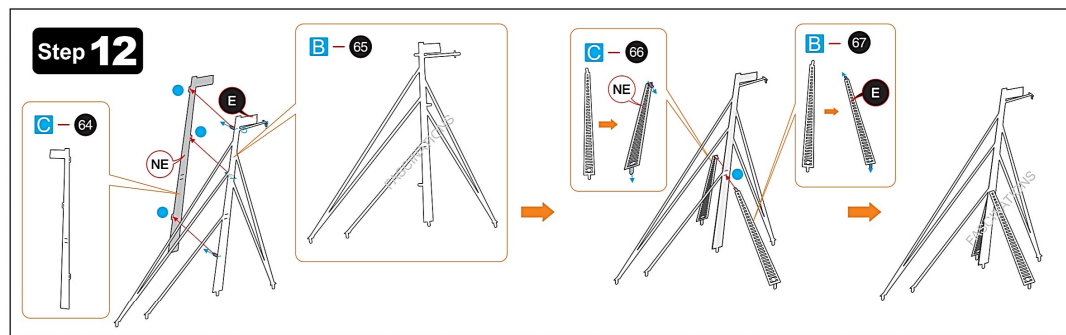
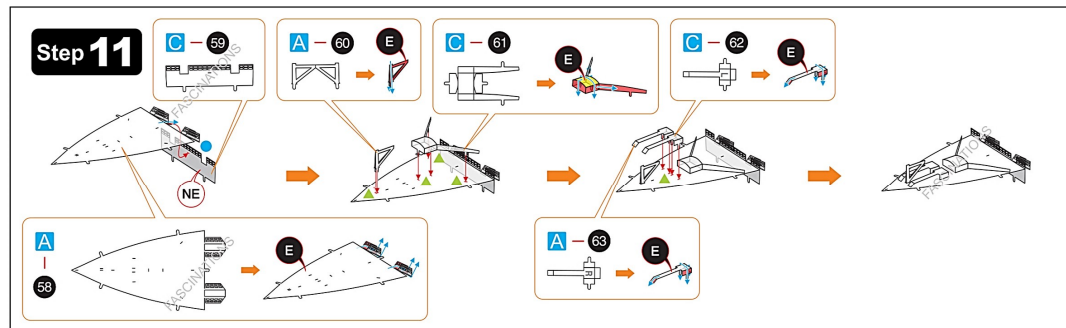
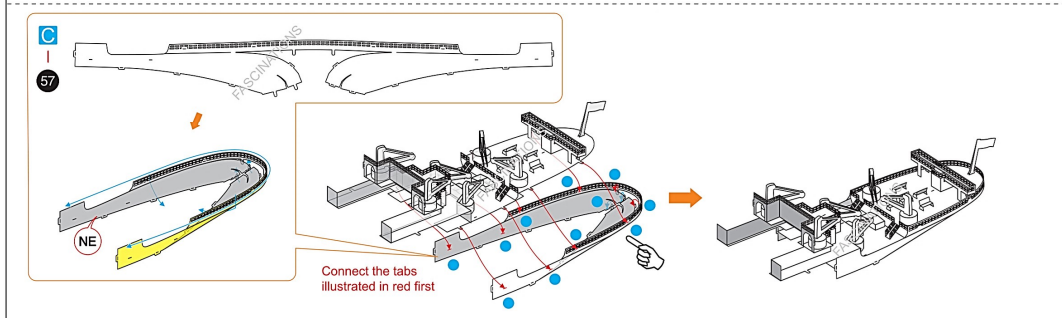
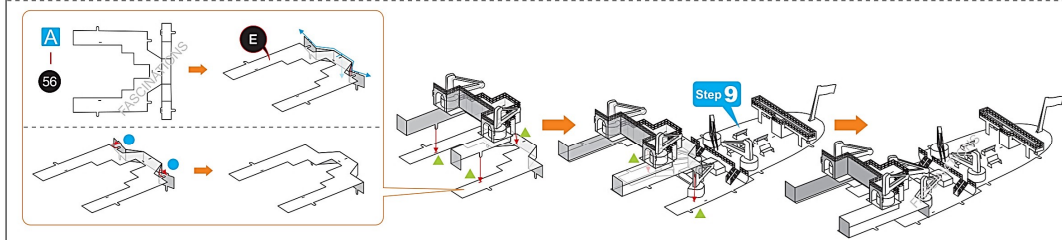
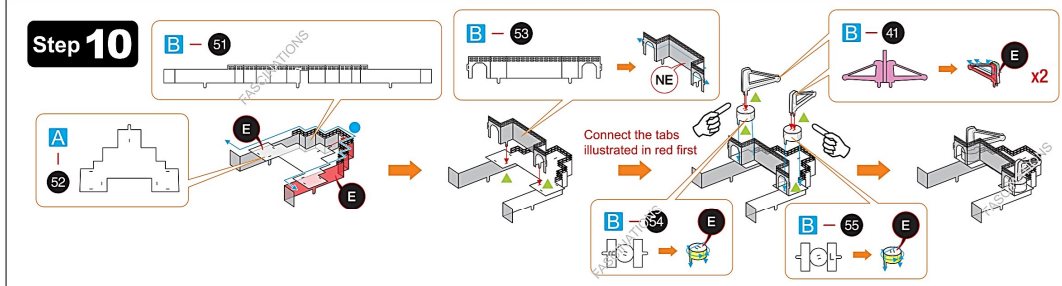
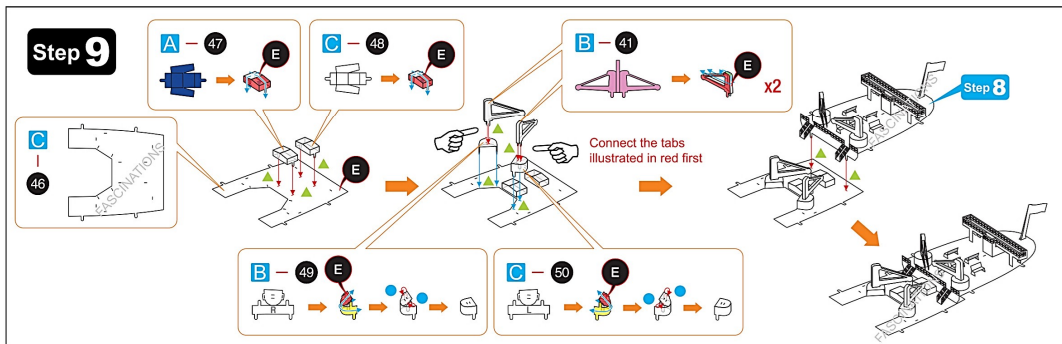
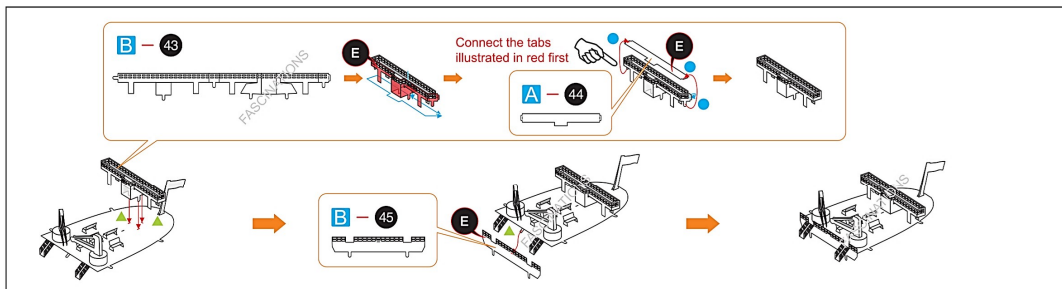


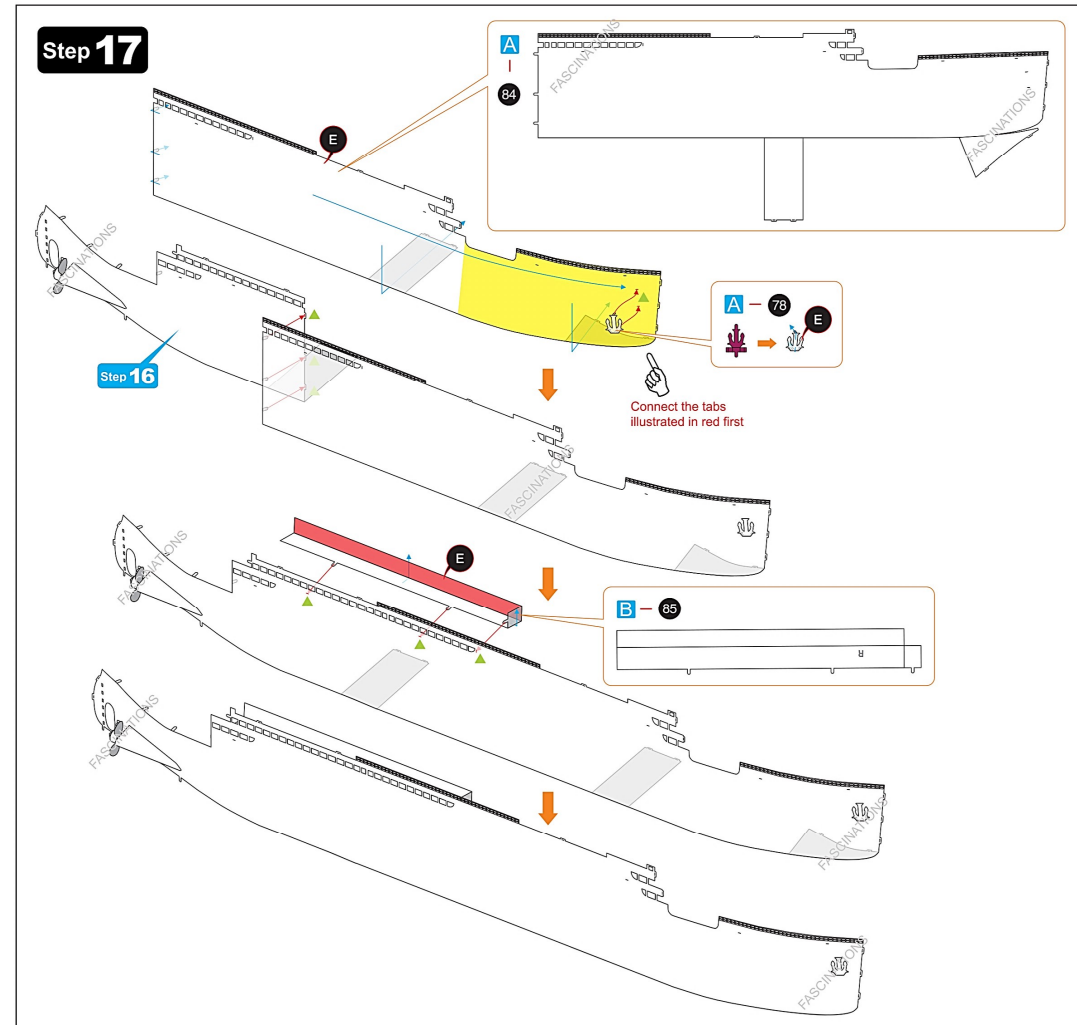
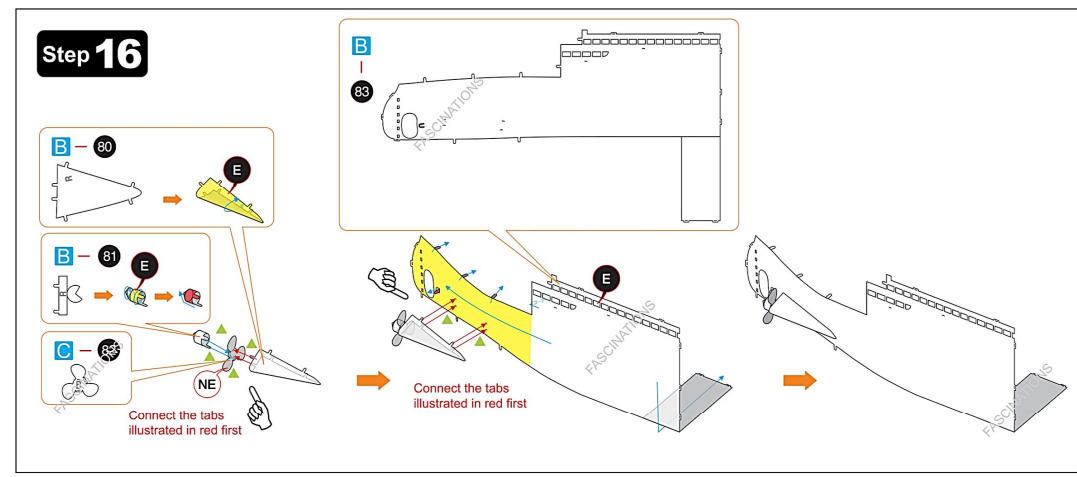
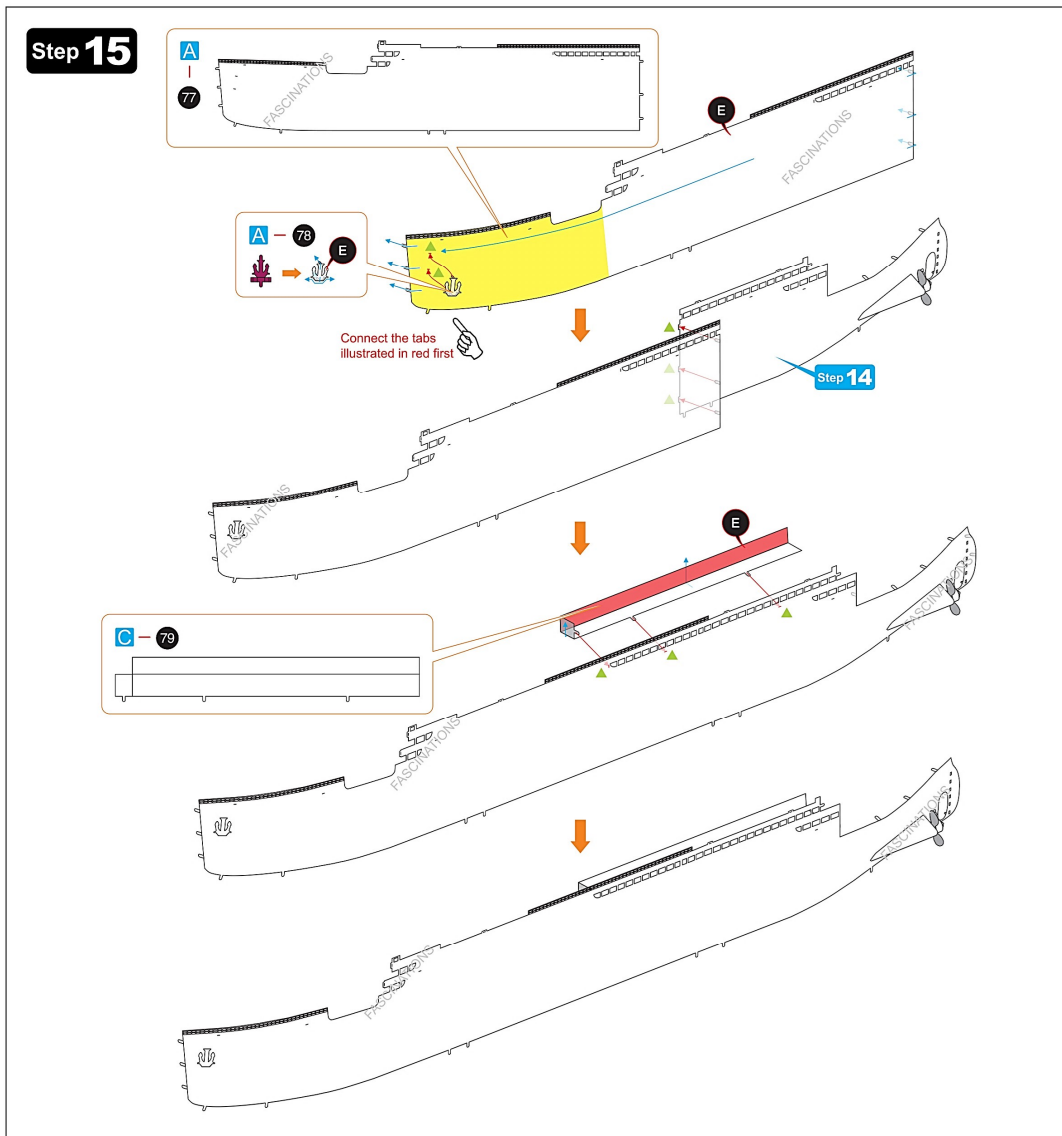
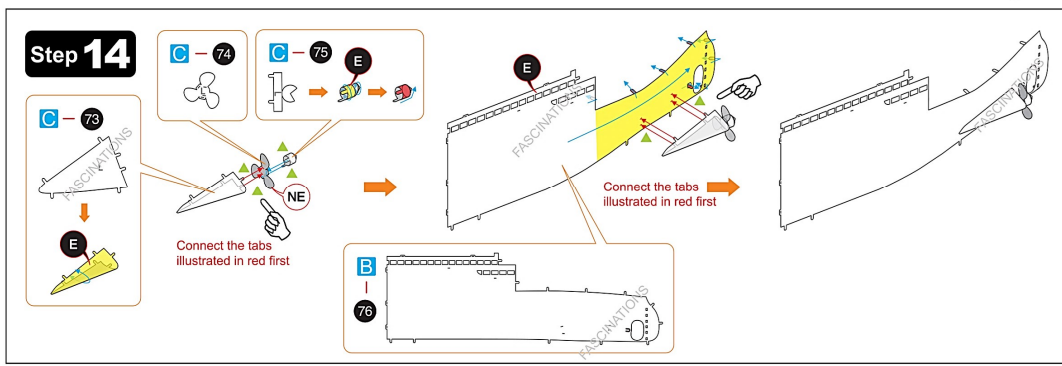
Step 7



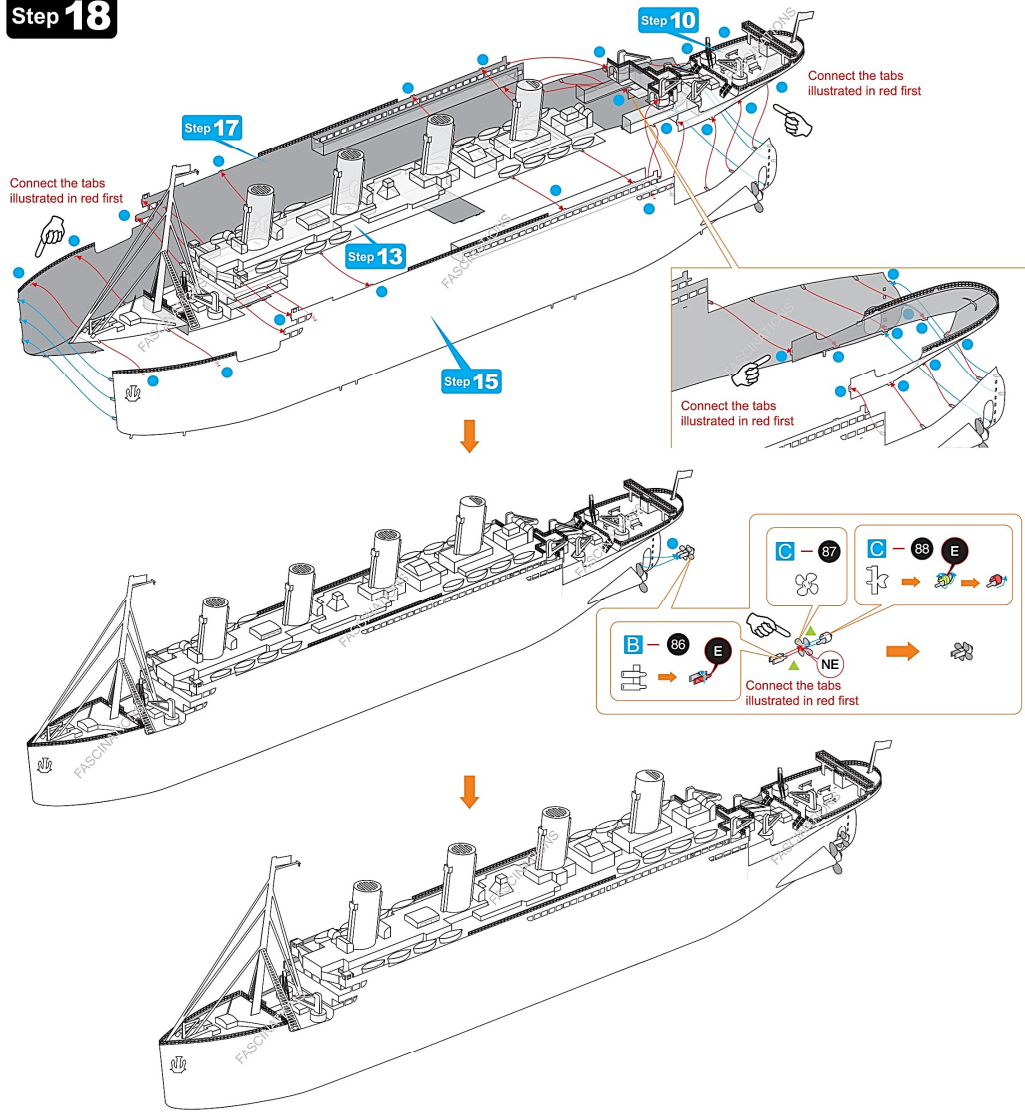
Step 8



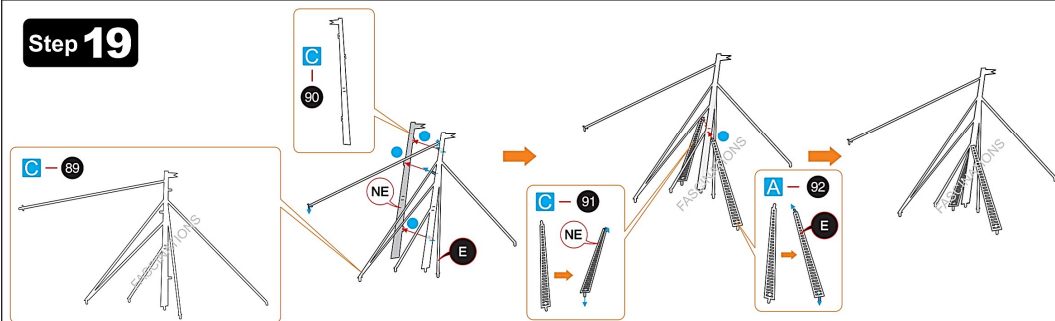




Step 18



Step 19



Step 20

